

ELISE action
Webinar Series

European Union Location Framework (EULF) Blueprint

Its role and how to use it

*Ray BOGUSLAWSKI, European Commission, JRC (external consultant)
Lorena HERNANDEZ, European Commission JRC
Simon VREČAR, European Commission JRC (consultant)*

18/03/21



European Location Interoperability
Solutions for e-Government

*Enabling Digital Government through
Geospatial and Location Intelligence*



ISA² Programme & ELISE action

European Interoperability Programme

cross-border and cross-sector interoperability solutions

for public administrations, businesses and citizens

54 different actions tackling **interoperability** from different angles

ELISE action is the **only** action focusing on the **location dimension**

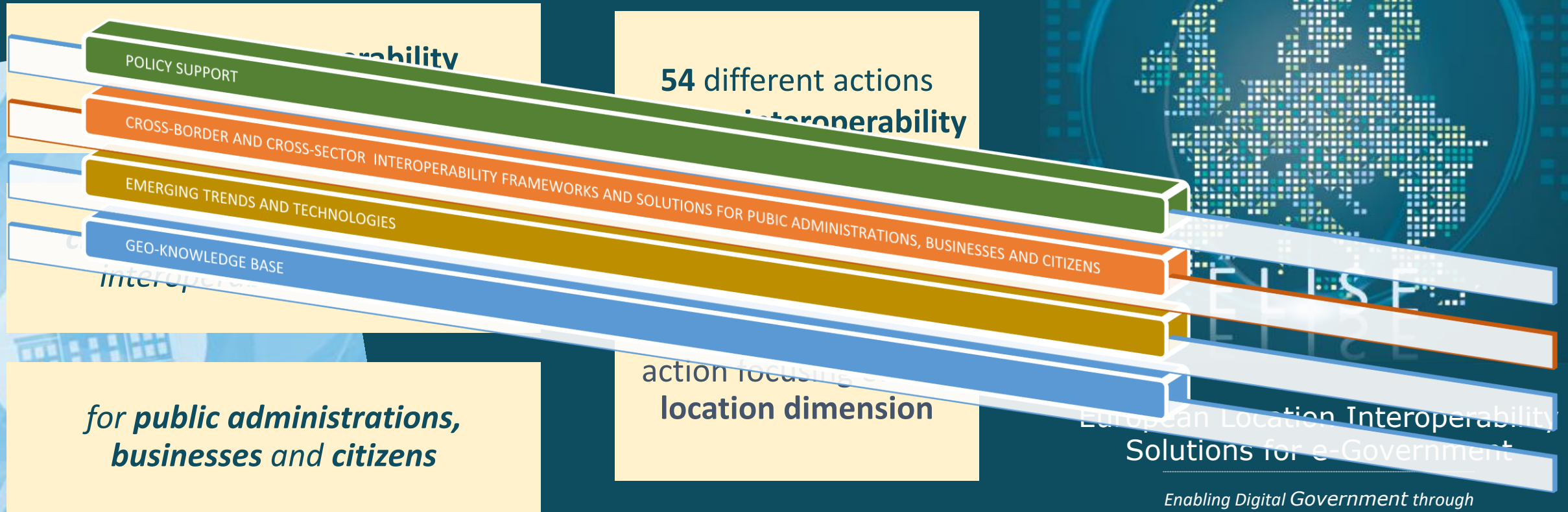


European Location Interoperability Solutions for e-Government

Enabling Digital Government through Geospatial and Location Intelligence



















ELISE action





Welcome to the ELISE webinar series



 <p>ELISE action Webinar Series</p> <p><i>The Role of Geospatial for Digital Government Transformation</i></p> <p>07/05/2019 14:00 CEST (UTC+2)</p>	 <p>ELISE action Webinar Series</p> <p><i>Governance models, ecosystems and benefits of APIs for public sector organisations</i></p> <p>11/06/2019 14:00 CEST (UTC+2)</p>	 <p>ELISE action Webinar Series</p> <p><i>Persistent Identifiers (PIDs) as the glue for linking information infrastructures</i></p> <p>15/07/2019 14:00 CEST (UTC+2)</p>	 <p>ELISE action Webinar Series</p> <p><i>Geospatial Technology and Public Participation</i></p> <p>28/08/2019 14:00 CEST (UTC+2)</p>
<p>ELISE Webinar - The role of Geospatial for Digital Government</p> <p>07/05/2019 event </p>	<p>ELISE Webinar - Governance models, ecosystems and benefits</p> <p>11/06/2019 event </p>	<p>ELISE Webinar - Persistent Identifiers (PIDs) as the glue for</p> <p>15/07/2019 event </p>	<p>ELISE Webinar - Geospatial Technology and Public Participation</p> <p>28/08/2019 event </p>
 <p>ELISE action Webinar Series</p> <p><i>The Role of Spatial Data Infrastructures for Digital Government Transformation</i></p> <p>09/10/2019 11:00 CEST (UTC+2)</p>	 <p>ELISE action Webinar Series</p> <p><i>Using serious games in the geospatial domain to stimulate digital transformation of government</i></p> <p>14/01/2020 14:00 CEST (UTC+2)</p>	 <p>ELISE action Webinar Series</p> <p><i>The role of Organisational Interoperability in the context of Geospatial and Digital Government Transformation</i></p> <p>11/02/2020 14:00 CEST (UTC+2)</p>	 <p>ELISE action Webinar Series</p> <p><i>Location Intelligence and Partnerships to support the Sustainable Development Goals</i></p> <p>30/04/2020 14:00 CEST (UTC+2)</p>
<p>ELISE Webinar - The role of Spatial Data Infrastructures for</p> <p>09/10/2019 event </p>	<p>ELISE Webinar - Using serious games in the geospatial domain to</p> <p>14/01/2020 event </p>	<p>ELISE Webinar - The role of Organisational Interoperability in the</p> <p>11/02/2020 event </p>	<p>ELISE Webinar - Location Intelligence and Partnerships to support</p> <p>30/04/2020 event </p>

ELISE Knowledge Transfer activities

Purpose:

- Engage in an agile way
- with topics of relevance to the Digital Transformation
- by harnessing the use of spatial data and technology.
- Share the results of ELISE activities.

<https://europa.eu/!nP74ph>



Our speaker

Ray
BOGUSLAWSKI

External Consultant
European Commission
Joint Research Centre

The views expressed are purely those of the authors and may not in any circumstances be regarded as stating an official position of the European Commission.



What we will cover today

1. Role of the EULF Blueprint in the context of European digital and data policy

2. Scope of the EULF Blueprint and its key messages

3. Discussion & questions: Relevance of the EULF Blueprint

4. How can you use the EULF Blueprint to answer key questions?

5. Discussion & questions: How to get value from the EULF Blueprint

6. Conclusions and next steps

7. Discussion & questions: Final thoughts

1

*Role of the EULF Blueprint
in the context of European
digital and data strategy*

EULF Blueprint – What is it?

A European 'location interoperability framework' with recommendations and guidance for the exchange and use of location information in government policy and digital public services, allied closely to the interoperability principles and scope of the EIF



Published document



5 FOCUS AREAS



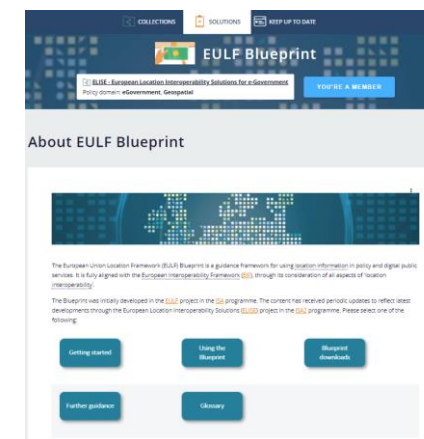
19 RECOMMENDATIONS



6 ROLES



49 BEST PRACTICES



Online content

What is location interoperability?

“ Location interoperability is the ability of organisations, systems and devices to exchange and make use of location data with a coherent and consistent approach ”





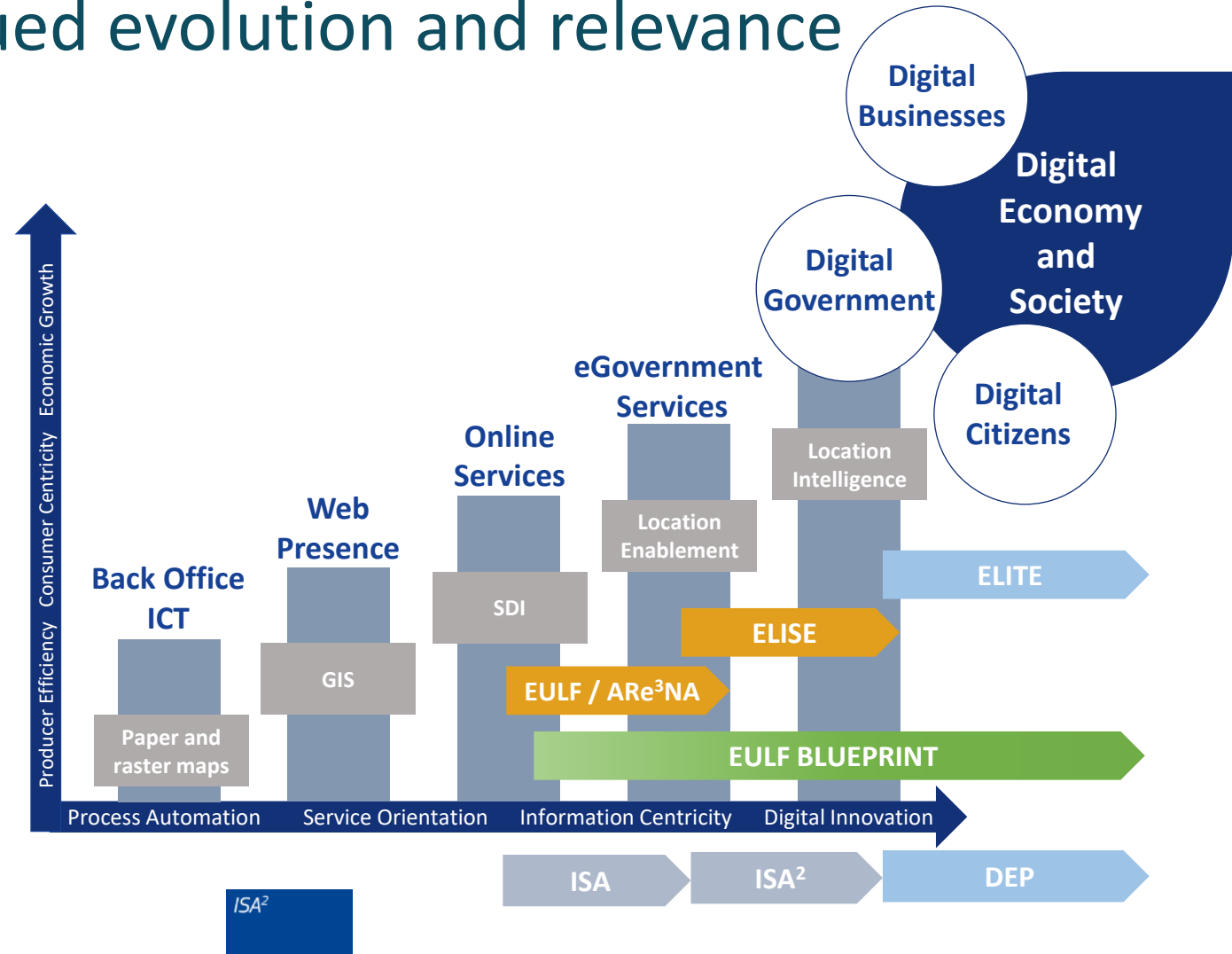
EULF Blueprint – continued evolution and relevance

Progressive **evolution in use of ICT and data** in government paralleled by **evolution in collection, sharing and exploitation of location data**

Geospatial and location interoperability a strong focus of the **ISA** and **ISA²** programmes through **EULF**, **ARE3NA** and **ELISE** actions

EULF Blueprint** has evolved as the guiding **location interoperability framework** to reflect developing policies and practices **in line with the EIF

Continued role** as part of the **ELITE** action in the **Digital Europe Programme (DEP)





What the EULF Blueprint aims to do

NEW DEVELOPMENTS

- Give a **location perspective** on latest **policy** and **technology developments** that may not yet be covered elsewhere in European policy communications – always in a **practical** way
- Try to **'join up'** as far as possible **policy thinking** (e.g. data and digital, EU and MS, national and local)

UNDERSTANDING

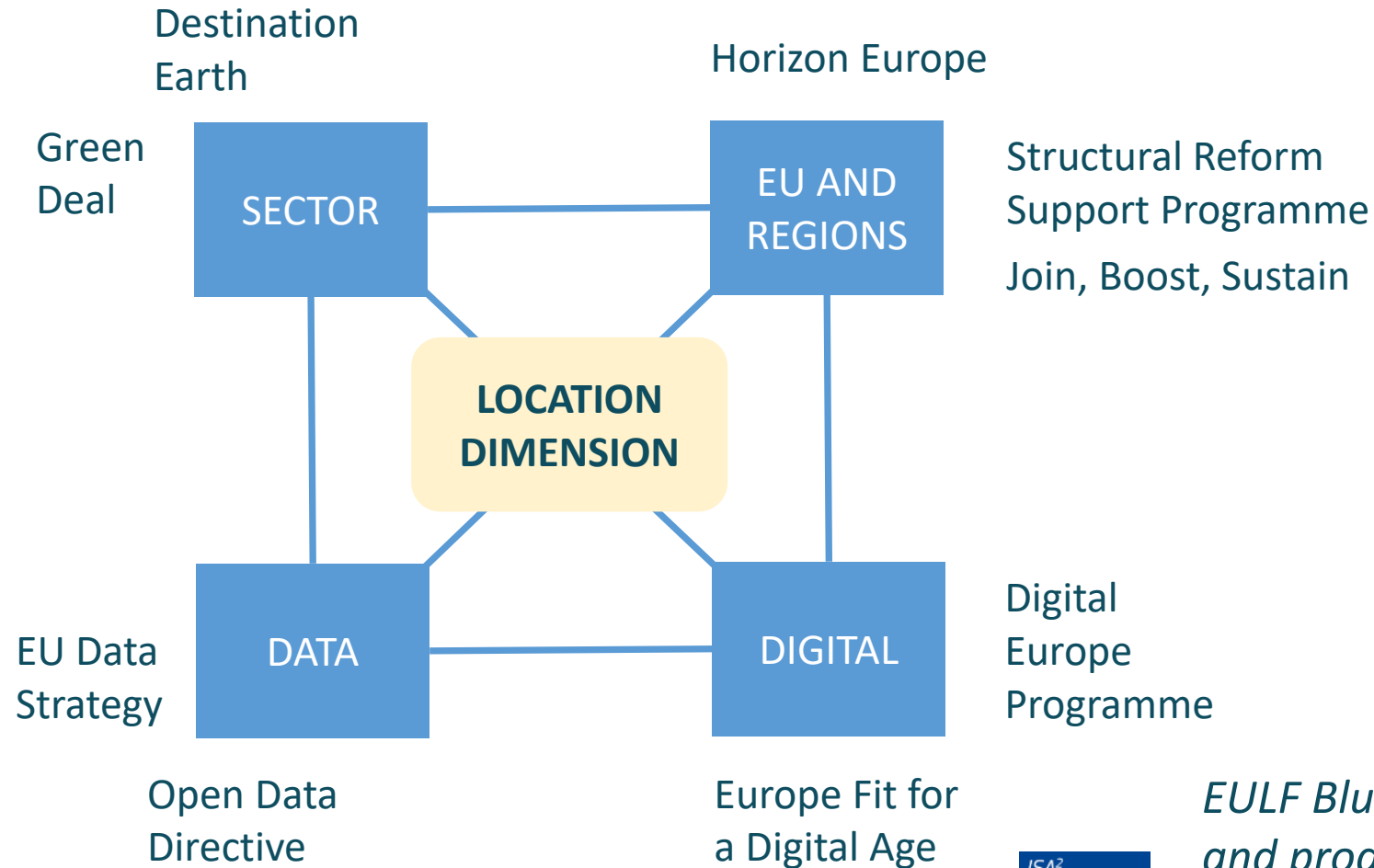
- Understand the **challenges** and **opportunities** faced by all parties
- Explain **concepts** and **terms** used widely – but not always understood

GUIDANCE

- Deliver a **'toolbox'** of recommendations and associated guidance for different situations – to use selectively rather than read from start to finish
- Share **best practices** in coordination activities and use cases in different sectors and government levels – to illustrate the guidance and support reuse and collaboration

*All relating to **location data** in the context of **digital government** – with the **users of digital public services** and data always **at the centre** of the framework*

Understanding and interpreting the policy context

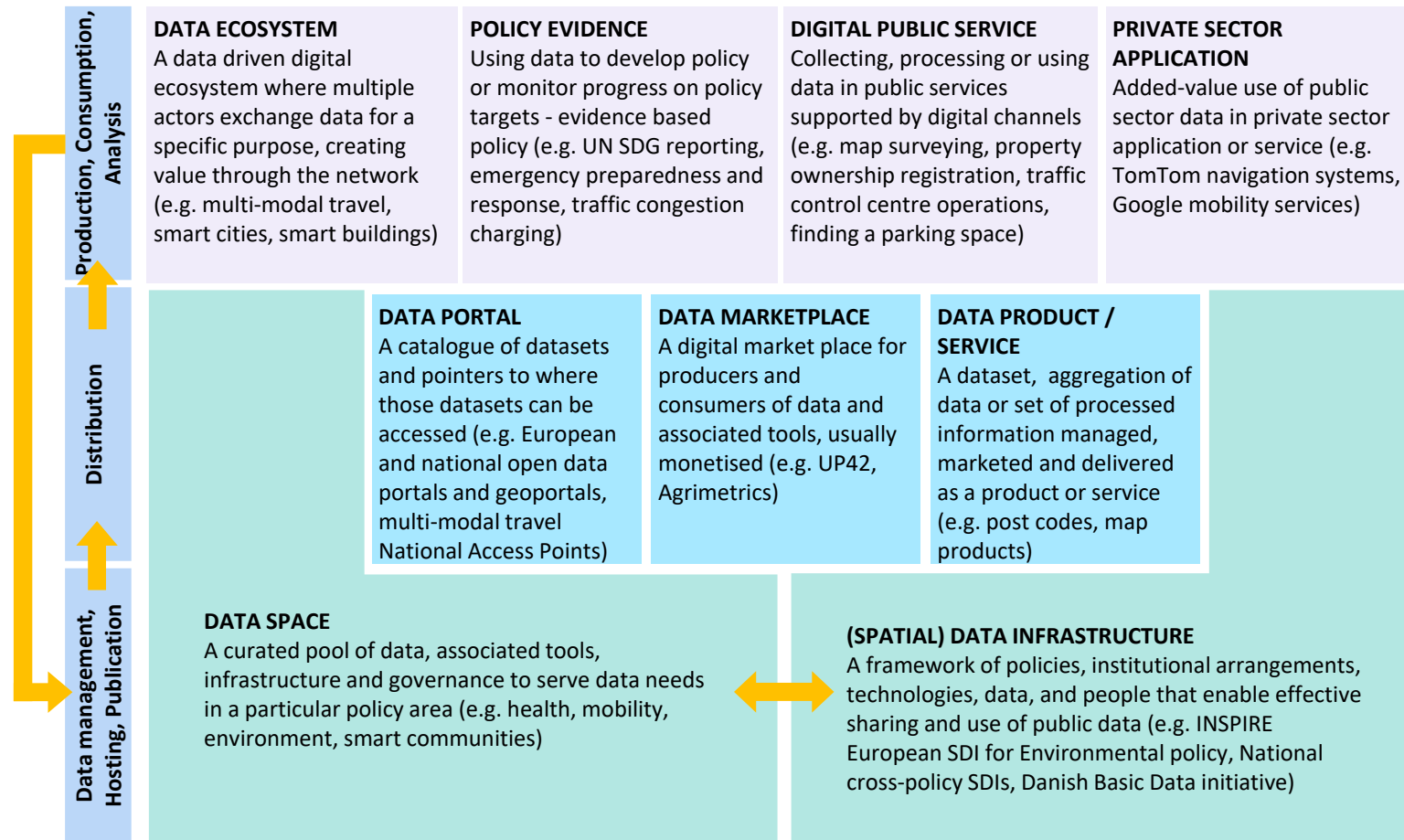


EULF Blueprint main themes:

- User needs*
- Value creation*
- Collaboration*
- Innovation*
- Integration*
- Skills*

EULF Blueprint helps to understand EU policies and programmes and provide a practical response

Terms applied in collecting, publishing and using public data



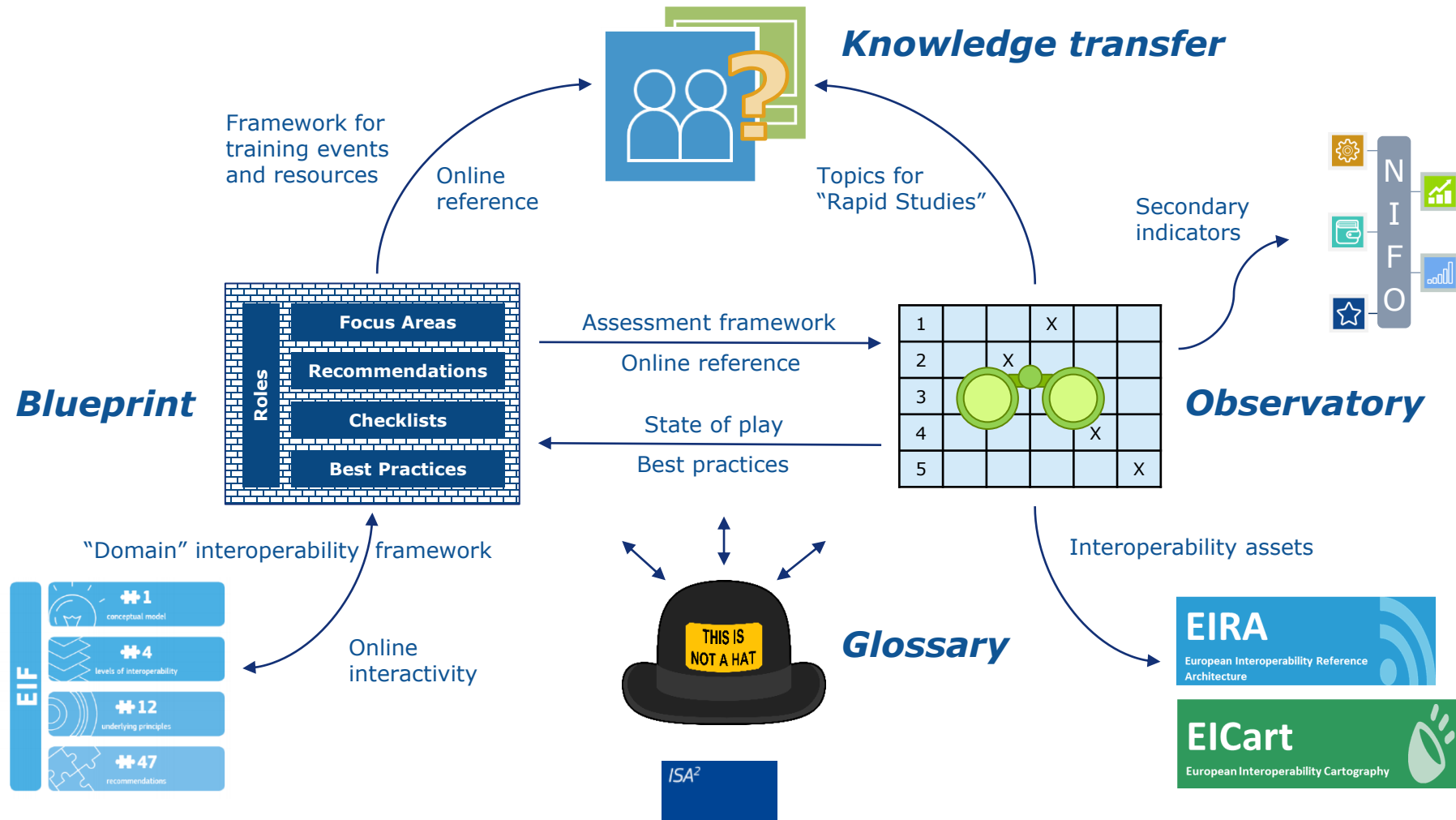
EULF Blueprint helps to explain terms and concepts to communicate digital and data policy context and aid understanding

2

*Scope of the EULF
Blueprint and its key
messages*

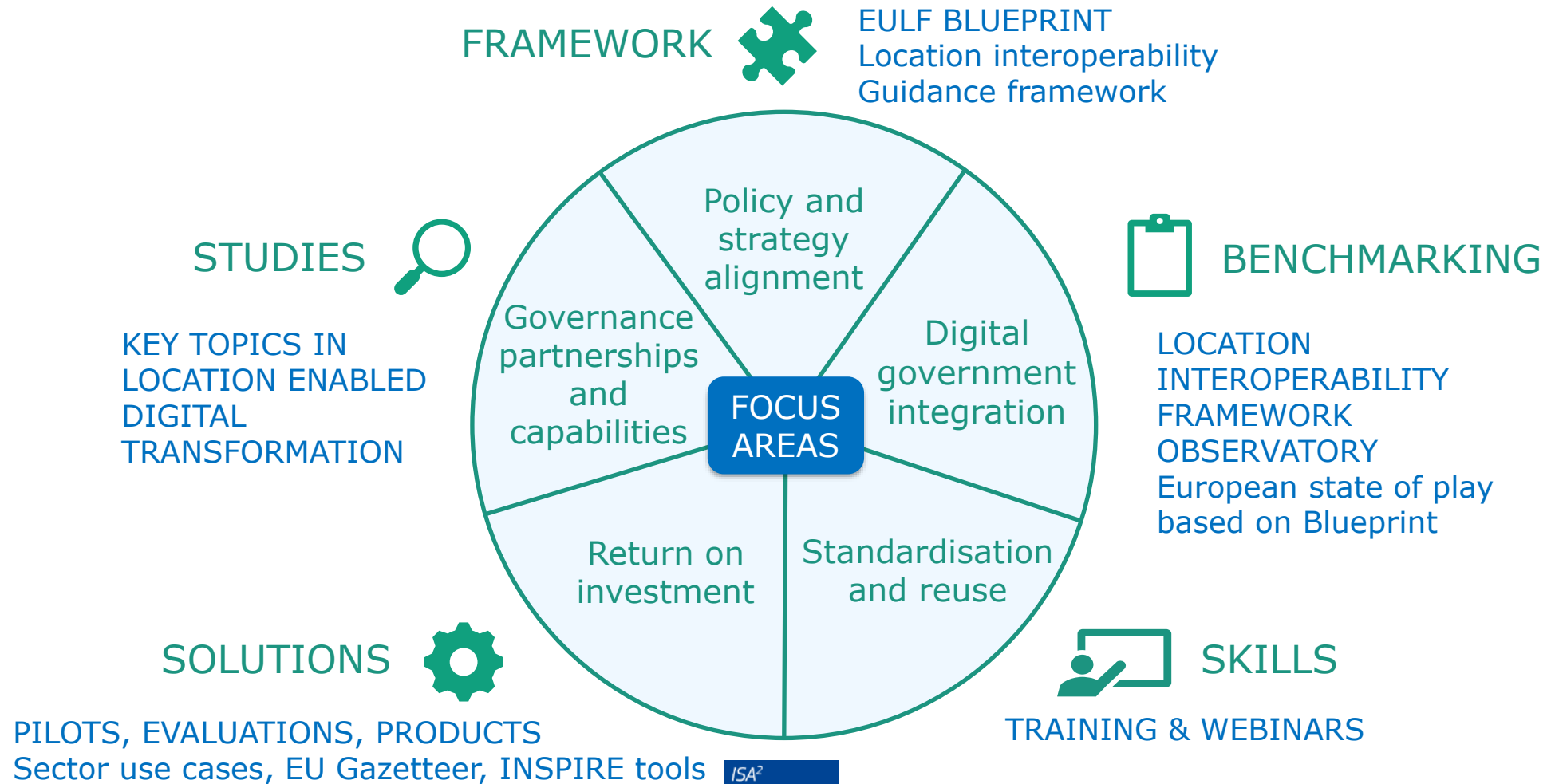


ELISE 'location interoperability framework' elements



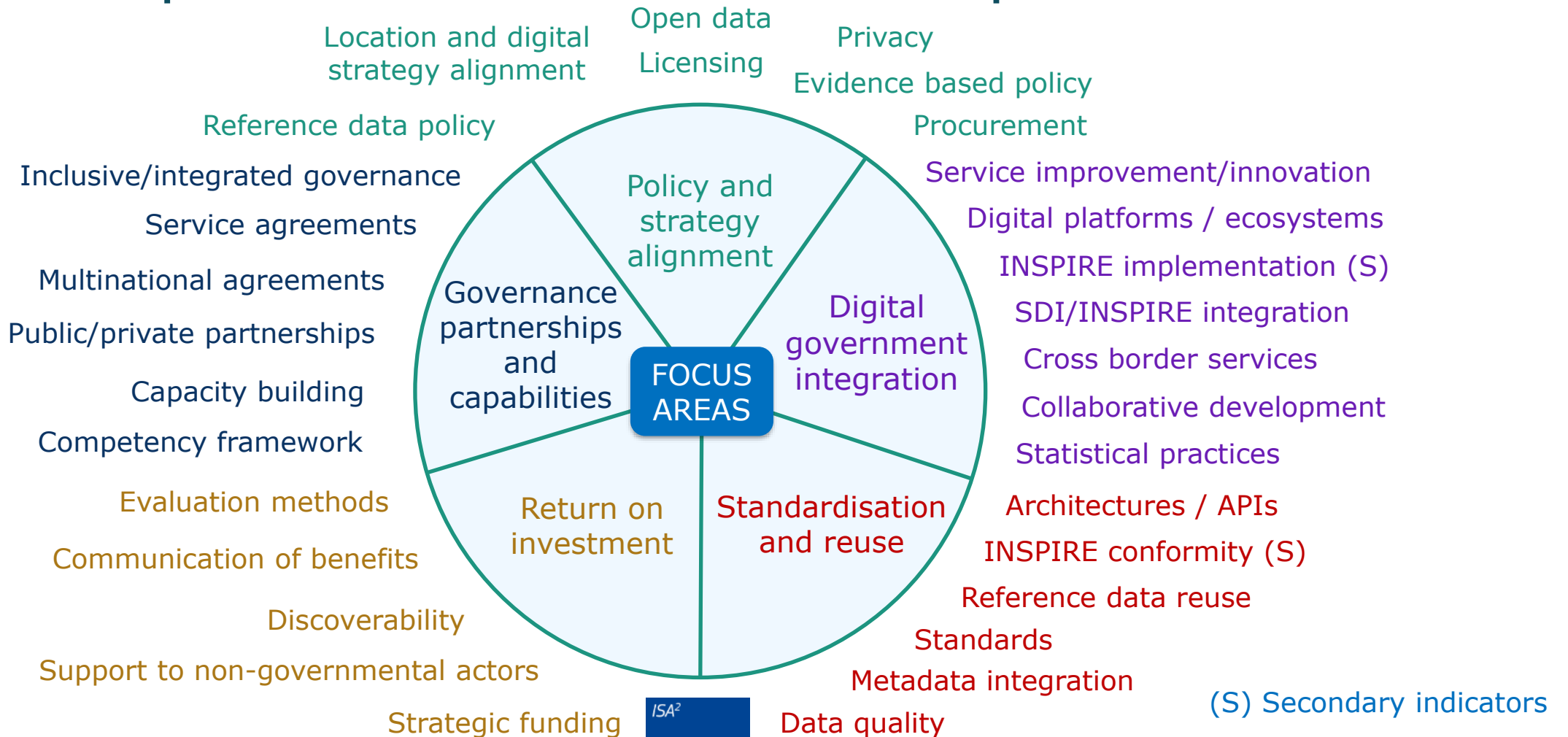


EULF Blueprint focus areas: Framework for ELISE activities





EULF Blueprint and LIFO indicator topics





“Blueprint for a user driven SDI” – example practices

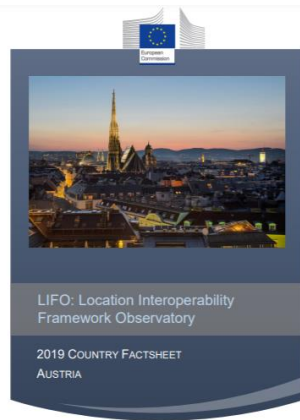
FOCUS AREA	EXAMPLE PRACTICES
Policy and strategy alignment	<ul style="list-style-type: none">• Use location based evidence to inform policy• Alignment of location and open data policy• Implement personal ‘location privacy’ measures respecting GDPR
Digital government integration	<ul style="list-style-type: none">• Develop SDI content and services to support different usages of the data at different levels of government and in different sectors• User-centred agile development of location-enabled digital public services + feedback• Public sector participation in digital and data ecosystems important to functioning of society
Standardisation and reuse	<ul style="list-style-type: none">• Standardised framework for heterogeneous and agile reuse (through APIs)• Reference data implementation for more coherent and easier to use digital public services• Include relevant external data in the SDI (e.g. community sourced, business data)
Return on investment	<ul style="list-style-type: none">• Promote innovation in and with private sector using public sector location data• Funding models to enable free external access to high value public sector datasets
Governance, partnerships and capabilities	<ul style="list-style-type: none">• Inclusive transparent governance models, involving public sector and external users• Awareness raising and skills programme linked to geospatial competency framework

LIFO 2019

LIFO monitors adoption of good practices in the EULF Blueprint

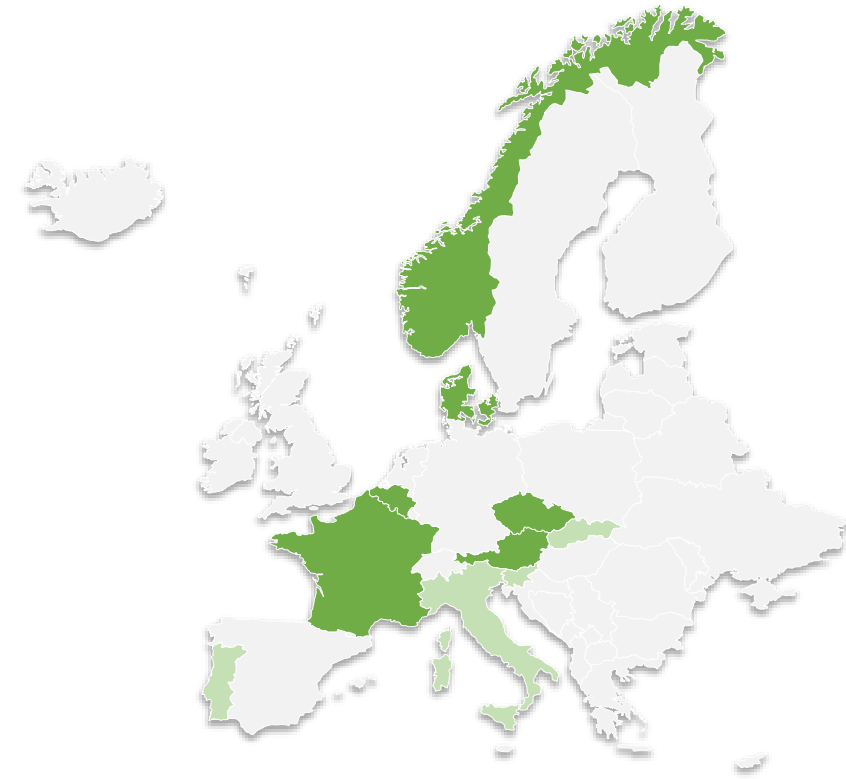
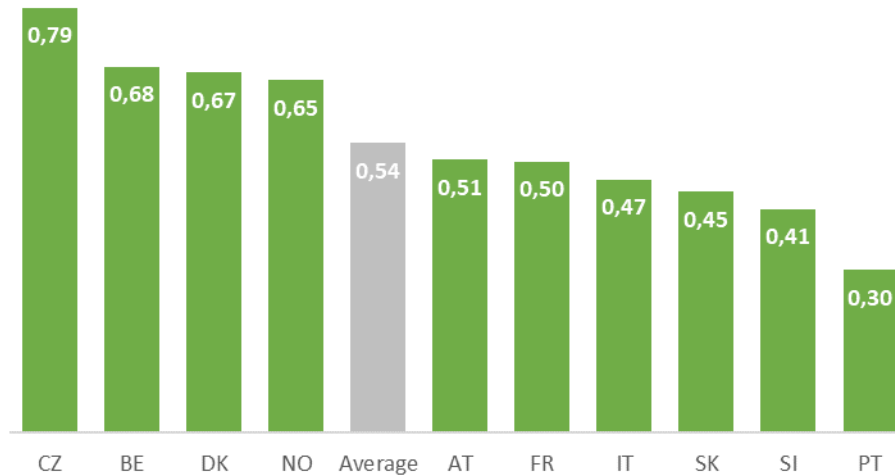


European State of Play Report



10 Country Factsheets

23 countries engaged in LIFO 2020



■ LIFO Index equal to or above 0,5
■ LIFO Index below 0,5

3

*Discussion and questions:
Relevance of the EULF
Blueprint*

4

*How can you use the EULF
Blueprint to answer key
questions?*

EULF Blueprint – Focus Areas



Policy and strategy alignment

a consistent EU and Member State policy and legislative approach where location information plays a significant role



Digital government integration

making location a key enabler in G2B, G2C and G2G digital government processes and systems



Standardisation and reuse

adoption of recognised geospatial and location-based standards and technologies, enabling interoperability and reuse



Return on investment

ensuring funding of activities involving location information is value for money, and taking action to stimulate innovation and growth



Governance, partnerships and capabilities

effective decision making, collaboration, knowledge and skills related to the provision and use of location information in the context of digital government



EULF Blueprint – Recommendations

POLICY AND STRATEGY ALIGNMENT

1. Connect location information and **digital government strategies** in all legal and policy instruments
2. Make location information policy integral to, and aligned with, wider **data policy** at all levels of government
3. Ensure all measures are in place, consistent with legal requirements, to protect personal **privacy** when processing **location data**
4. Make effective use of location-based analysis and location intelligence for **evidence-based policy** making
5. Use a **standards-based** approach in the **procurement** of location data and related services in line with broader ICT standards-based procurement



EULF Blueprint – Recommendations

DIGITAL GOVERNMENT INTEGRATION

6. Identify where **digital public services** can be simplified or transformed using location information and location intelligence, and implement **improvement** actions that create value for users
7. Use spatial data infrastructures (**SDIs**) in digital public services and data ecosystems across sectors, levels of government and borders, **integrated** with broader public data infrastructures and external data sources
8. Adopt an **open and collaborative methodology** to design and improve location-enabled digital public services
9. Adopt an integrated **location-based** approach in the collection and analysis of **statistics** on different topics and at different levels of government



EULF Blueprint – Recommendations

STANDARDISATION AND REUSE

10. Adopt a **common architecture** to develop digital government solutions, facilitating the integration of geospatial requirements
11. Reuse existing **authentic data**, data services and relevant technical solutions where possible
12. Apply relevant **standards** to develop a comprehensive approach for spatial data modelling, sharing, and exchange to facilitate integration in digital public services
13. Manage location **data quality** by linking it to policy and organisational objectives, assigning accountability to business and operational users and applying a “fit for purpose” approach



EULF Blueprint – Recommendations

RETURN ON INVESTMENT

15. Apply a consistent and systematic approach to **monitoring** the **performance** of location-based services
16. **Communicate** the **benefits** of integrating and using location information in digital public services
17. Facilitate the use of public administrations' location data by non-governmental actors to stimulate **innovation** in products and services and enable job creation and **growth**

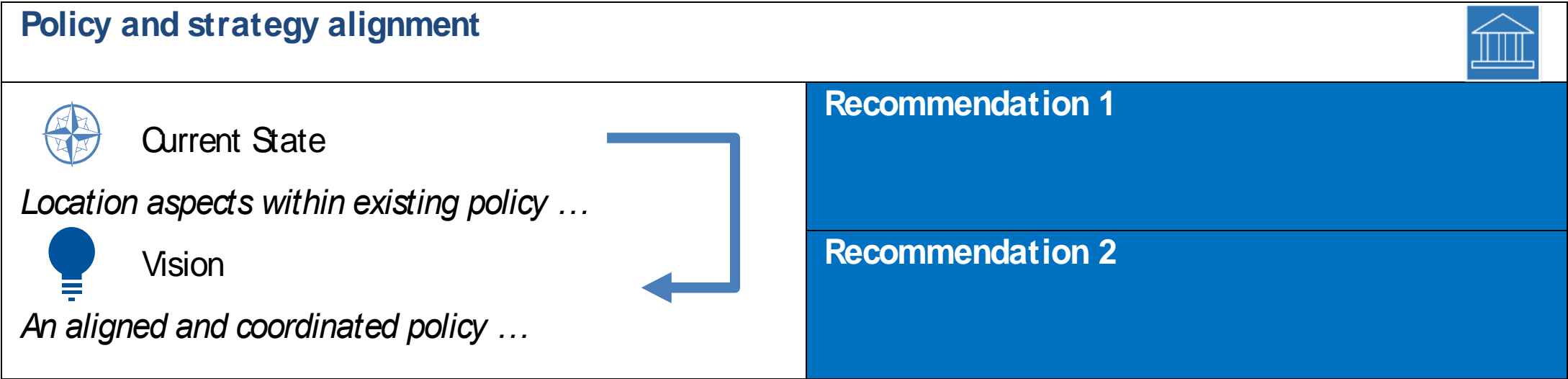


EULF Blueprint – Recommendations







GOVERNANCE, PARTNERSHIPS AND CAPABILITIES

17. Introduce **integrated governance** of location information processes at all levels of government, bringing together different governmental and non-governmental actors around a common goal
18. **Partner effectively** to ensure the successful development and exploitation of location data infrastructures
19. Invest in communications and **skills** programmes to ensure sufficient **awareness** and **capabilities** to drive through improvements in the use of location information in digital public services and support growth opportunities

EULF Blueprint – Focus Areas

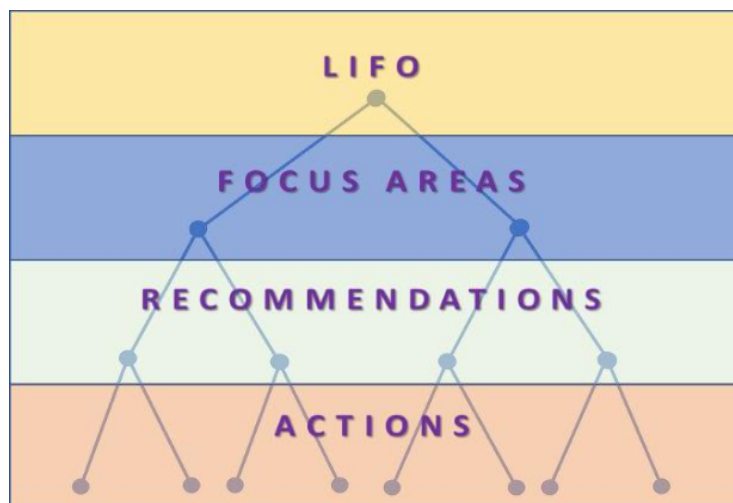


EULF Blueprint – Recommendations

✓ Recommendation 1: Connect location information ...	
	Why: Core location information ...
	How: <i>Divided into "Action Areas"</i> ICT strategies ...
	Challenges: Lack of understanding by policy makers...
	Best Practices: #1: A generic GIS ...
	Related EIF Recommendations: Recommendation 1: ...
	Further Reading: EU Better Regulation Toolbox

Find detailed guidance on ... in
[Guidelines for...](#)

LIFO monitors adoption of the EULF Blueprint recommendations



A “balanced scorecard” approach

Level	No.	Scoring method
LIFO	1	Average of the 5 Focus area indexes
Focus area	5	Average of scores for all recommendations associated with a focus area
Recommendation	19	Average of normalised scores for all indicators associated with a recommendation
Action	48	Scores calculated using different scoring methods, converted to standard normalised scores in range 0-1.

EULF Blueprint online

- Joinup “solution”
- To access search “**ELISE solution blueprint**”
- Access content using **BUTTONS** or **SIDEBAR LINKS**

COLLECTIONS SOLUTIONS KEEP UP TO DATE

EULF Blueprint

ELISE - European Location Interoperability Solutions for e-Government
Policy domain: eGovernment, Geospatial

YOU'RE A MEMBER

About EULF Blueprint

- Overview
- About**
- Getting started
- Using the Blueprint
- EULF Blueprint by Focus Area
- EULF Blueprint by Role
- Recommendations
- Best Practices
- EIF Relationships
- Blueprint downloads
- Further guidance
- Glossary

The European Union Location Framework (EULF) Blueprint is a guidance framework for using location information in policy and digital public services. It is fully aligned with the European Interoperability Framework (EIF), through its consideration of all aspects of 'location interoperability'.

The Blueprint was initially developed in the EULF project in the ISA programme. The content has received periodic updates to reflect latest developments through the European Location Interoperability Solutions (ELISE) project in the ISA2 programme. Please select one of the following:

Getting started Using the Blueprint Blueprint downloads

Further guidance Glossary

EULF Blueprint

Getting started

- Introductory video
- Outline of EULF Blueprint context
- Summary of the guidance and thoughts on future positioning:
“Blueprint for a user driven SDI”

Getting started

You can learn about the EULF Blueprint by accessing the following:

Watch the video



Initial reading

Understand the context for the Blueprint and read a summary paper 'Blueprint for digital government transformation in Europe through a user-driven SDI'.

Context

Blueprint for a
user-driven SDI



EULF Blueprint

Using the
Blueprint

- Access by **focus area** or by **role**
- Access from a list of the **recommendations**
- Review **best practices** and recommendations applied
- See where the Blueprint recommendations **align with the EIF**

Using the Blueprint

The Blueprint is divided into five **focus areas**, where a 'current state' assessment and 'future state' vision are outlined and key points for achieving the vision are described through a series of **recommendations**. Each recommendation comprises a rationale for its inclusion, a series of action checklists, challenges to be overcome, illustrative best practices, links to related EIF recommendations and recommended further reading.

To use the guidance, either scan the [focus areas](#) that interest you or follow the paths created for specific [roles](#) and activities.

Access Blueprint
by Focus Area

Access Blueprint
by Role

You can also access the full list of the Blueprint [recommendations](#) and look at those of interest, see how the Blueprint [best practices](#) apply recommendations in the different focus areas, and examine the [relationships between the EIF and Blueprint recommendations](#).

Recommendations

Best Practices

EIF Relationships



EULF Blueprint

Access Blueprint
by Focus Area

- Select one of the **five focus areas** (in this case Digital Government Integration)
- Review the **current state** and **vision** for the focus area
- Drill down into the **guidance** for one or more of the **recommendations** associated with the focus area

Digital Government Integration



The European Union Location Framework Blueprint is a guidance framework for 'location-enabling' digital government. The framework is divided into five focus areas. This section presents the **Digital Government Integration focus area**. It outlines a 'current state' assessment and 'future vision' for the focus area and provides practical recommendations to achieve the vision, each with a rationale for its inclusion, a series of action checklists, challenges to be overcome, illustrative best practices, links to related EIF recommendations and recommended further reading.

Current State

Location information is key to effective public services and is being applied more effectively as public administrations introduce data-driven online services, spurred on by policy developments, e.g. climate, mobility, economic growth and EU policies such as Cohesion Policy, Smart Specialisation, Europe Fit for the Digital Age and the European Data Strategy. Digital innovation and collaborative developments are progressing in different policy areas but much more can be achieved to benefit users and partners. This will require more user-driven SDI support for digital public services, data ecosystems and digital platforms across the policy landscape, and capable of meeting both national and European demands for location data.

Vision

Location information is well integrated in digital public services and processes, supporting new business models, more effective collaboration and location-based decision making, and helping to transform public service delivery across government (G2G, G2B and G2C). SDIs are fulfilling an important role in digital transformation both nationally and in Europe. Following the once-only principle, users do not have to supply the same information multiple times. There is visibility of common coordinating and support structures, expert groups and technologies, a strong user voice in the design, evaluation and improvement of location-based services, and good evidence of digital public service innovation and take-up of services.

Recommendations

[Recommendation 6](#)

Identify where digital public services can be simplified or transformed using location information and location intelligence, and implement improvement actions that create value for users

[Recommendation 7](#)

Use spatial data infrastructures (SDIs) in digital public services and data ecosystems across sectors, levels of government and borders, integrated with broader public data infrastructures and external data sources

EULF Blueprint

Access Blueprint
by Role

- **Role-based views** of the guidance:
 - Policy Maker
 - Digital Public Service Owner, Manager or Implementer
 - ICT Manager, Architect or Developer
 - Data Manager or Data Scientist (see extract)
 - Public Sector Location Data Provider
 - Private Sector Product or Service Provider
- Showing relevant **recommendations** for **typical tasks**
- **Click** on recommendations **to see the guidance**

Data Manager or Data Scientist

The relevant Blueprint recommendations for a **Data Manager or Data Scientist** that should be considered in undertaking typical tasks are grouped as follows:

- [Policy and strategy alignment](#)
- [Digital government integration](#)
- [Standardisation and reuse](#)
- [Return on investment](#)
- [Governance, partnerships and capabilities](#)

Policy and strategy alignment

Recommendations	Data policy and governance	Data specification and modelling	Data acquisition and quality	Data documentation, organisation and control	Data access, sharing and dissemination	Data warehousing and analytics	Data archiving
-----------------	----------------------------	----------------------------------	------------------------------	--	--	--------------------------------	----------------

1. Connect location information and digital government strategies in all legal and policy instruments	<input checked="" type="checkbox"/>	<input type="checkbox"/>	<input type="checkbox"/>	<input type="checkbox"/>	<input type="checkbox"/>	<input type="checkbox"/>	<input type="checkbox"/>
---	-------------------------------------	--------------------------	--------------------------	--------------------------	--------------------------	--------------------------	--------------------------

2. Make location information policy integral to, and aligned with, wider data policy at all levels of government	<input checked="" type="checkbox"/>	<input checked="" type="checkbox"/>	<input type="checkbox"/>	<input type="checkbox"/>	<input type="checkbox"/>	<input type="checkbox"/>	<input type="checkbox"/>
--	-------------------------------------	-------------------------------------	--------------------------	--------------------------	--------------------------	--------------------------	--------------------------



EULF Blueprint

Recommendations



Recommendation 6: Identify where digital public services can be simplified or transformed using location information and location intelligence, and implement improvement actions that create value for users



Why

- As everything happens in a place or space, location information underpins many digital public services. However, this is not always understood or recognised, and location information is not always used in the most effective and efficient ways.



How

Find many examples of use cases in the [EULF References document](#)

Key events inventory

- A focus on 'key events' which are in some way related to 'location' can help in deciding priorities for optimisation of relevant digital public services.



Challenges

- Better use of location information is only one aspect of public service improvement
- The significance and benefits of well-managed or applied location information may not be understood or be clear
- The benefits of investment in other areas may be more cost effective or felt to be more cost effective because they are more clearly understood and defined



Best Practices

- [# 1: A digital platform for location data in Flanders](#)
- [#14: Air quality monitoring and reporting in Belgium](#)
- [#18: Territorial Information System of Navarre: SITNA](#)
- [#21: Integrated transport solutions: TRAVELINE](#)
- [#22: Standardised road safety data exchange](#)



Related EIF Recommendations

- [Recommendation 13](#): As far as possible under the legislation in force, ask users of European public services once-only and relevant-only information.
- [Recommendation 17](#): Simplify processes and use digital channels whenever appropriate for the delivery of European public services, to respond promptly and with high quality to users' requests and reduce the administrative burden on public administrations, businesses and citizens.
- [Recommendation 28](#): Document your business processes using commonly accepted modelling techniques and agree on how these processes should be aligned to deliver a European public service.



Further Reading

- [United Nations E-Government Survey](#)
- [OECD Digital Government](#)
- [Digital Government Benchmark - Study on Digital Government Transformation](#)



EULF Blueprint

Best Practices

There are 49 best practice case studies in the EULF Blueprint

EULF Blueprint Best Practices

These are projects, services and other initiatives, drawn from [studies](#), surveys (notably the [LIFO](#)) and other sources, demonstrating best practices in the use of interoperable [location information](#) in [digital government](#), and showing which recommendations in the EULF Blueprint are applied.

Best Practice	Country
Best Practice 1 A digital platform for location data in Flanders	BE
Best Practice 2 IDOS - Cross border journey planner for citizens	CZ
Best Practice 3 'LoG-IN' to the local economic knowledge base	BE, DE, UK
Best Practice 4 What's in Your Backyard for farmers	UK
Best Practice 5 Radiological emergency response	DE
Best Practice 6 Digital exchange platform for spatial plans	NL
Best Practice 7 National landslide warning system	IT
Best Practice 8 'One solution for all emergency services'	PO

Best Practice 1 - A digital platform for location data in Flanders

Country: Belgium

Policy domain: Agriculture & Spatial planning

Process owners: Agency for Information Flanders (AGIV)

Short description: In 2013 the Flemish government launched GeoPunt. The aim of the Geopunt project is to bridge the gap between shared location data infrastructure and end users. The platform makes available authentic government, [INSPIRE](#) and other data through a partnership between Government, Businesses and Citizens. It bridges the gap with end users by enabling the creation of custom-tailored tools for different types of users with different levels of [geo-maturity](#). In essence there are four components that allow tailoring: The Portal, Plugins, MAP APIs and Webservices [API](#).

Recommendations: [Policy and Strategy Alignment \(1, 4\)](#); [Digital Government Integration \(6, 8\)](#); [Standardisation and Reuse \(12\)](#); [Return on Investment \(16\)](#); [Governance, Partnerships and Capabilities \(18\)](#)

Link:

Map: <http://www.geopunt.be/>

Presentation: https://ies-svn.jrc.ec.europa.eu/attachments/download/973/APIs_Flanders.pdf

EULF Blueprint

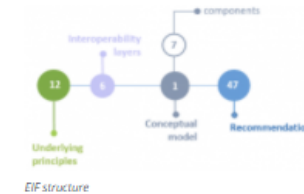
EIF Relationships

- Links from **EULF Blueprint** to **EIF Toolbox**
- List of **EIF recommendations** in the different EIF pillars:
 - Principles (12)
 - Layers (6)
 - Conceptual Model (1)
- **Links to EIF Toolbox** to see **solutions** relevant to each EIF recommendation
- **Links to EULF Blueprint recommendations** relevant to each EIF recommendation

EIF Relationships

The EULF Blueprint is a 'location interoperability framework' applying the European Interoperability Framework (EIF) in the geospatial domain.

The EIF has 12 principles, 6 layers, 1 conceptual model (with 7 components) and 47 recommendations. There are 19 recommendations associated with the principles, 14 with the layers and 14 with the conceptual model.



Each of the recommendations in the EULF Blueprint includes references to the related EIF recommendations.

The table below summarises the relationships from the perspective of the EIF. For each of the following parts of the EIF, it highlights the related EULF Blueprint recommendations.

- [Principles](#)
- [Interoperability Layers](#)
- [Conceptual Model for Integrated Public Services](#)

Principles

EIF Underlying Principle	EIF Recommendation	EULF Blueprint Recommendations
1. Subsidiarity and proportionality	1. Ensure that national interoperability frameworks and interoperability strategies are aligned with the EIF and, if needed, tailor and extend them to address the national context and needs.	
2. Openness	2. Publish the data you own as open data unless certain restrictions apply. 3. Ensure a level playing field for open source software and demonstrate active and fair consideration of using open source software, taking into account the total cost of ownership of the solutions.	Policy and Strategy Alignment (2): Return on Investment (16)
	4. Give preference to open specifications, taking due account of the coverage of functional needs, maturity and market support and innovation.	Standardisation and Reuse (12)



EIF Toolbox



- Links from **EIF Toolbox** to **EULF Blueprint**
- **EULF Blueprint solution page** in EIF Toolbox
- List of EIF recommendations with:
 - **Links** to the **EIF recommendation** to see relevant solutions
 - **Links** to related **EULF Blueprint recommendations**
 - **Notes** explaining the relationship

Solution: European Union Location Framework Blueprint

[Back to Recommendations](#)

[Back to Solutions](#)



Glossary



What is EIF

General Information



The European Union Location Framework (EULF) Blueprint is a framework of recommendations and related guidance for publishing and using location information and applying [interoperability](#) principles in digital government. The EULF Blueprint was initially developed through the [EULF](#) project in the [ISA](#) programme. The content has been updated extensively through the European Location [Interoperability](#) Solutions for e-Government ([ELISE](#)) project, which is part of the [ISA2](#) programme.

[Go to Solution](#)

The European Union Location Framework Blueprint implements the following EIF recommendations as explained below:

✓ [Recommendation 2](#) | **Principle 2: Openness**

[Recommendation 2](#) of the EULF Blueprint recommends alignment of location data policy with wider data policy, mentioning [open data](#) policy as an important example.

[Recommendation 16](#) of the EULF Blueprint recommends an 'open data by default' policy to facilitate re-use of public sector location data by non-governmental actors.

✓ [Recommendation 4](#) | **Principle 2: Openness**

[Recommendation 12](#) of the EULF Blueprint recommends the use of open standards where possible.

✓ [Recommendation 5](#) | **Principle 3: Transparency**

EULF Blueprint [Recommendation 2](#) recommends a prominent role for location information in national open data policy and implementation. EULF Blueprint [Recommendation 3](#) spells out the requirements for transparency in how personal data is used.



EULF Blueprint

Blueprint
downloads

Further guidance

Blueprint downloads

Further guidance

The online Blueprint content corresponds to the Blueprint v4 document. You can download this and previous versions by clicking on the links below.

Downloads

EULF Blueprint v4.0	2020
EULF Blueprint v3.0	2019
EULF Blueprint v2.0	2018
EULF Blueprint v1.0	2017

Change history

- Version 4.0** Inclusion of a foreword positioning the EULF Blueprint as the [ISA2](#) Programme draws to a close.
- Rework of the introduction, with a new Gartner hype cycle of [digital government](#) technologies – 2019 and assumptions on some of the main definitions.
- Addition of a cross-references between the [EIF](#) and EULF Blueprint recommendations.
- Review and update of links and further reading to ensure they remain applicable.
- Updates to the 'current state' and 'future vision' for each focus area, taking into account the findings of the [ELISE](#) studies and the LIFO 2019 survey.

More detailed guidance is available for selected topics in the Blueprint:

[Guidelines for public procurement of geospatial technologies](#)

[Guidelines for public administrations on location privacy](#)

[Guidelines for Design of location-enabled e-government services](#) and [Improving use of location information in e-government processes: methodology and use case](#)

[Guidelines on Architectures and Standards](#)

REPORT ABUSIVE CONTENT



EULF Blueprint – Illustrations in using the guidance

Looking for some guidance on location data good practices

- Start with the online version and look at the video
- Review the context and 'blueprint for a user driven SDI' to get an overall feel for the positioning of the Blueprint
- Go to the 'Using the Blueprint' page and do some trial navigations of the content
- If you want to examine particular topics, go to the 'focus area' or 'recommendations' pages and select your area of interest
- If you want to look generally at what may be relevant in your role, go to 'access blueprint by role' and follow the appropriate links to your role

Developing a future SDI strategy

- Read the foreword, with a summary of relevant policy considerations and features of a user-driven SDI
- Get the right governance in place (see Blueprint recommendations on governance)
- Consider your priorities in a 'top down' way. Read the general 'current state' and 'future vision' summaries for each focus area get a broad understanding. Look in more detail at your LIFO assessment (if available)
- Consider the recommendations as a checklist for inclusion in the strategy.
- See in particular recommendations 2, 6 and 7. Explore potential pathways for evolution of SDIs and the role of digital platforms, data ecosystems, digital twins and location intelligence.

EULF Blueprint – Illustrations in using the guidance

Developing an organisation's approach on a particular location-related topic

- Location privacy is an example covered in the EULF Blueprint guidance (Recommendation 3)
- Establish high level 'ownership' on the topic in your organisation
- Determine relevant part(s) of the guidance dealing with the topic
- Review the challenges and action checklists to help with planning the work programme
- Consult generally on approaches to the topic in national legislation, stakeholder groups, communications and support programmes – including in this case DG JUST resources
- Help develop approach with guidance in the EULF Blueprint and more detailed information if available (in this case, you may find useful the information on anonymisation techniques in the Guidelines for Public Administrations on Location Privacy).

Implementing a location data awareness and skills programme

- This is covered in EULF Blueprint Recommendation 19 and through training resources in ELISE and INSPIRE
- If location data is important in an organisation, both specialists and non-specialists need relevant knowledge
- The EULF Blueprint guidance gives pointers that can be applied either at an organisation level or in planning a crosscutting skills programme
- The role of a geospatial competency framework is discussed and the importance of linking with broader ICT competency frameworks
- The EULF Blueprint contains many examples of best practices and further reading to support skills programmes

5

*Discussion and questions:
How to get value from the
EULF Blueprint and ideas
for improvement*

6

*Conclusions and next
steps*

EULF Blueprint - Conclusions

- As a location data framework the EULF Blueprint combines a number of elements that make it **unique**
- The guidance can be used to help answer both **strategic** and **tactical** questions
- It provides a **gateway to other information** on relevant topics
- There is no “one size fits all” in using location data in different situations. The guidance is designed as a **'toolbox'** to be used selectively rather than read throughout

See for yourself what the EULF Blueprint can offer!

What makes the EULF Blueprint unique?

User driven

Based on interoperability principles

Practical guidance

Digital government focus

European context

Interactive content

Regular updates

Used for benchmarking

EULF Blueprint – Next steps?

ISA² – ELISE - 2021

- Reflect progress on EU data and digital strategies and smart communities developments
- Incorporate LIFO 2020 state of play and new best practices
- Interactive links to LIFO results
- Guidance from remaining ELISE activities, e.g. smart communities / smart spaces
- Links with UN-GGIM IGIF framework
- Enhance references to ELISE studies and training resources

DEP – ELITE – 2021/22

- Evolution alongside EIF revision, e.g. cultural interoperability
- Enhance interactive presence as part of EIF toolbox
- Links with EIF4SCC framework, location data perspective
- User prioritised guidance, e.g. data spaces, smart communities, citizen-generated data
- Contribute to Interoperability Academy
- LIFO 2022 state of play and best practices
- LIFO enhanced tools, e.g. dashboard capabilities self-assessment tool

7

*Discussion and questions:
Final thoughts!*

Next ELISE webinars...

- April
 - 3rd week: 3 ELISE webinars giving an overview on ELISE outputs by the 'objective areas'
- May/June
 - Energy efficiency and location
 - Re3gistry
 - Reference Validator





Register now 

DigitALL Public conference

Working to make our lives better

20, 21 and 22 April 2021

<https://digitalpublic.eu>

ISA²

Photo by Simon Abrams on Unsplash



Thank you



Unless otherwise noted the reuse of this presentation is authorised under the CC BY 4.0 license.



Stay tuned



Join the *ELISE* community in JoinUp



@eu_location



eulocation@ec.europa.eu



ELISE playlist