

e-Government Core Vocabularies	
Summary	
ID	EU01
Initiative	ISA
Short description	Core Vocabularies are defined as simplified, re-usable and extensible data models that capture the fundamental characteristics of a data entity in a context-neutral fashion.
Owner	ISA Action 1.1
Contact	ISA Unit
Type	Framework
Sub-Type	Specification
Context	Cross-border, Cross-sector
Base Registry type	All
Operating model	The core vocabularies aim to harmonise the representation of the Entities such Business, Location, Person or and Public Service. Information can be assembled into electronic documents (e.g. XML) for download or electronic exchange or can be queried using a structured query language (e.g. SPARQL). Both methods allow for efficient service oriented solutions (e.g. Linked Data approach, Web or REST Services, SPARQL end-points, etc.).
IPR	ISA Open Metadata Licence v1.1 (https://joinup.ec.europa.eu/category/licence/isa-open-metadata-licence-v11)
Status	Operational
More details	
Aggregated business need	ABN – 1 Need for common understanding of data entities
Functionalities	<p>The main functionality covered by the Core Vocabularies is to reduce semantic conflicts in two ways:</p> <ul style="list-style-type: none"> • The design of new data models that extend the Core Vocabularies: new data models that make use of the Core Vocabularies as building blocks, either at conceptual level or at syntax-level, guarantee a minimum of cross-sector interoperability. • The mapping of existing data models to the Core Vocabularies: existing data models that have mappings to the Core Vocabularies, allow using the Core Vocabularies as a common foundational data model allowing to bridge different data models <p>Registered Organisation Vocabulary: is a simplified, reusable and extensible data model that captures the fundamental characteristics of a legal entity, e.g. the legal name, the activity,</p>

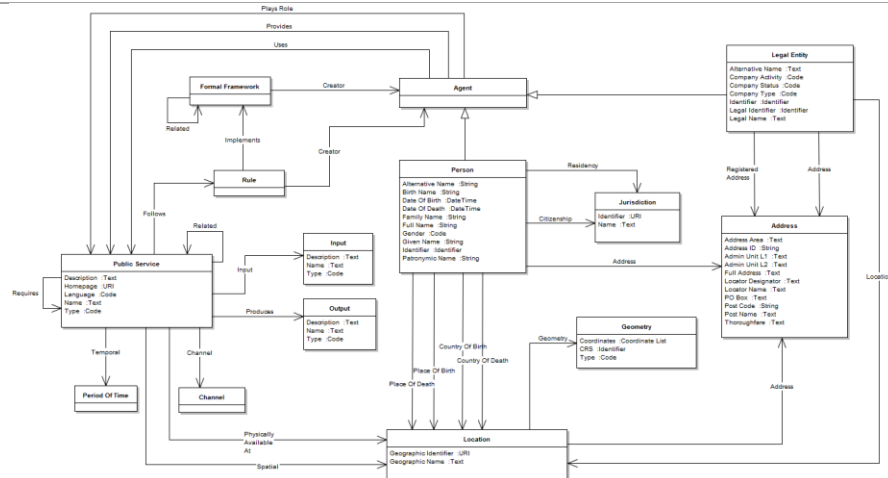
address, legal identifier, company type, and its activities. On 8 January 2013, the Core Business Vocabulary has been formally published on the W3C standards track as a Public Working Draft. It has been revised and renamed into Registered Organization Vocabulary⁴. The development of the Core Business Vocabulary was chaired by DG MARKT/F2, involved in the Business Register Information System (BRIS) project.

Core Location Vocabulary: is a simplified, reusable and extensible data model that captures the fundamental characteristics of a location, represented as an address, a geographic name, or geometry. The Location Vocabulary is aligned with the INSPIRE data specifications. The development of the Core Location Vocabulary was chaired by JRC/H6 Digital Earth and Reference Data involved in the implementation of the INSPIRE Directive.

Core Person Vocabulary: is a simplified, reusable and extensible data model that captures the fundamental characteristics of a person, e.g. the name, the gender, the date of birth, etc. The development of the Core Person Vocabulary was chaired by Eurojust, which promotes interoperability in the judicial domain via the EPOC IV project.

Core Public Service Vocabulary: is a simplified, reusable and extensible data model that captures the fundamental characteristics of a service offered by public administration. Such characteristics include the title, description inputs, outputs, providers, locations, etc. of the public service. The development of the Core Public Service Vocabulary was chaired by Theodoris Papadopoulos a representative from the Greek Ministry of Administrative Reform and E-Governance.

Design - Architecture



https://joinup.ec.europa.eu/asset/core_vocabularies/asset_release/core-vocabularies-v11#download

Technologies Specifications

XML Schema, RDF Schema
XML Schema, RDF Schema

Management	https://joinup.ec.europa.eu/asset/core_vocabularies/asset_release/core-vocabularies-v11
Governance	Not Available/Not Found
Sustainability	Not Available/Not Found
Documentation	https://joinup.ec.europa.eu/asset/core_vocabularies/asset_release/core-vocabularies-v11
ADMS	http://joinup.ec.europa.eu/site/core_vocabularies/Core_Vocabularies_v1.1/
Current Users	Not Available/Not Found

EIRA

View	Semantic View
Building Block	Core Data Model

Reusability

