

# European Commission - ISA Work Programme

## **EUROPEAN INTEROPERABILITY ARCHITECTURE PROJECT**

### **European Interoperability Reference Architecture (EIRA)**

Document Date: 05/01/2015

Document Version: 0.8.2 beta

**This report/paper was prepared for the ISA programme by**

Author's name : Marco Fichera, Pieter-Jan Beyls

Company's name : Deloitte Consulting CVBA

In the context of publishing the EIRA version v0.8.1 beta, 1 small change to the take-over version v0.8.0 beta from Deloitte ("*EIA-D02.01.02-v4.00\_Update and Validation of EIRA\_Visio*") has been made by PwC EU Services. The work on the EIRA was largely done by Deloitte Consulting CVBA.

## **Disclaimer**

The views expressed in this document are purely those of the writer and may not, in any circumstances, be interpreted as stating an official position of the European Commission.

The European Commission does not guarantee the accuracy of the information included in this study, nor does it accept any responsibility for any use thereof.

Reference herein to any specific products, specifications, process, or service by trade name, trademark, manufacturer, or otherwise, does not necessarily constitute or imply its endorsement, recommendation, or favouring by the European Commission.

All care has been taken by the author to ensure that s/he has obtained, where necessary, permission to use any parts of manuscripts including illustrations, maps, and graphs, on which intellectual property rights already exist from the titular holder(s) of such rights or from her/his or their legal representative.

The information and views set out in this presentation are those of the author(s) and do not necessarily reflect the official opinion of the Commission. The Commission does not guarantee the accuracy of the data included in this presentation. Neither the Commission nor any person acting on the Commission's behalf may be held responsible for the use which may be made of the information contained therein.

On 12th of June 2014, the ISA coordination group endorsed the current versions of the EIRA and Cartography Tool stating that they are mature enough to go to public consultation and to be used in pilots.

**This document will be further refined as the EIRA matures.**

ArchiMate® and TOGAF® are registered trademarks of The Open Group.



## European Interoperability Architecture (EIA) – Reference Architecture

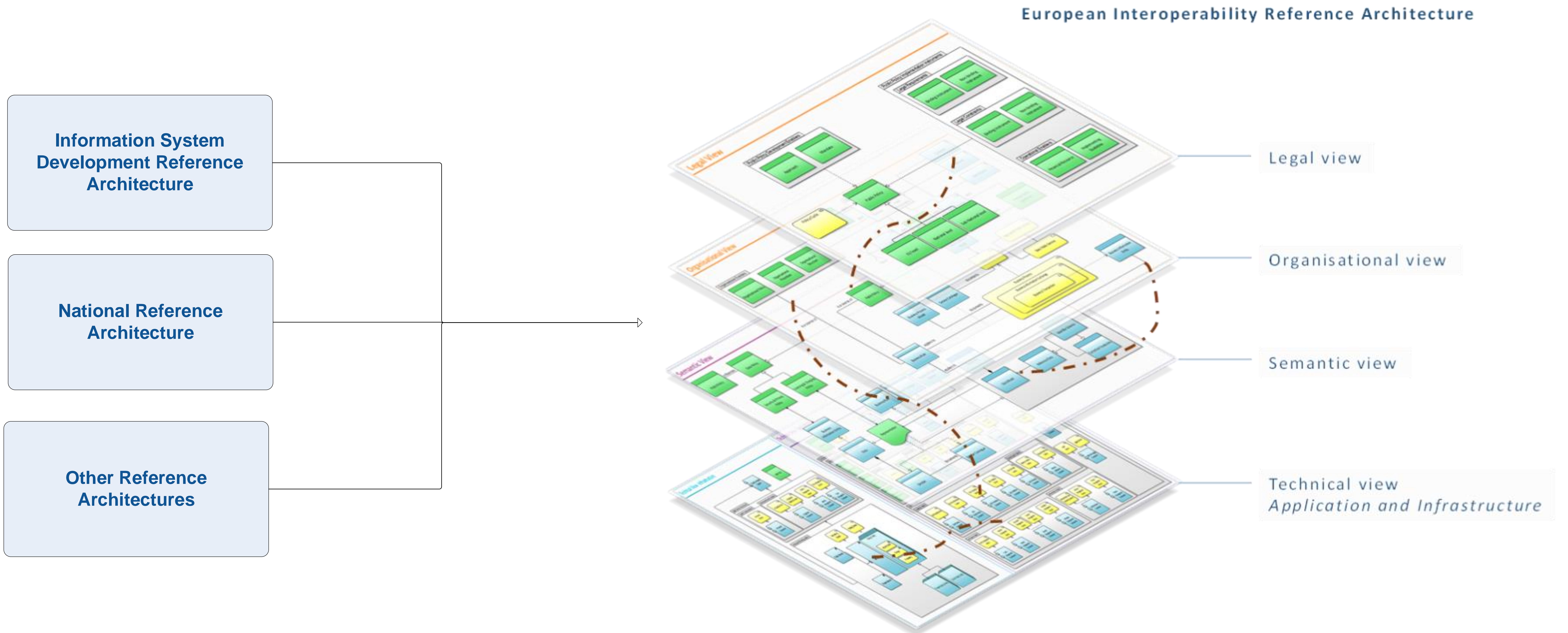
Archimate modelling notation legend:

active structure  
element

behaviour element

passive structure  
element

### Overview





## European Interoperability Architecture (EIA) – Reference Architecture

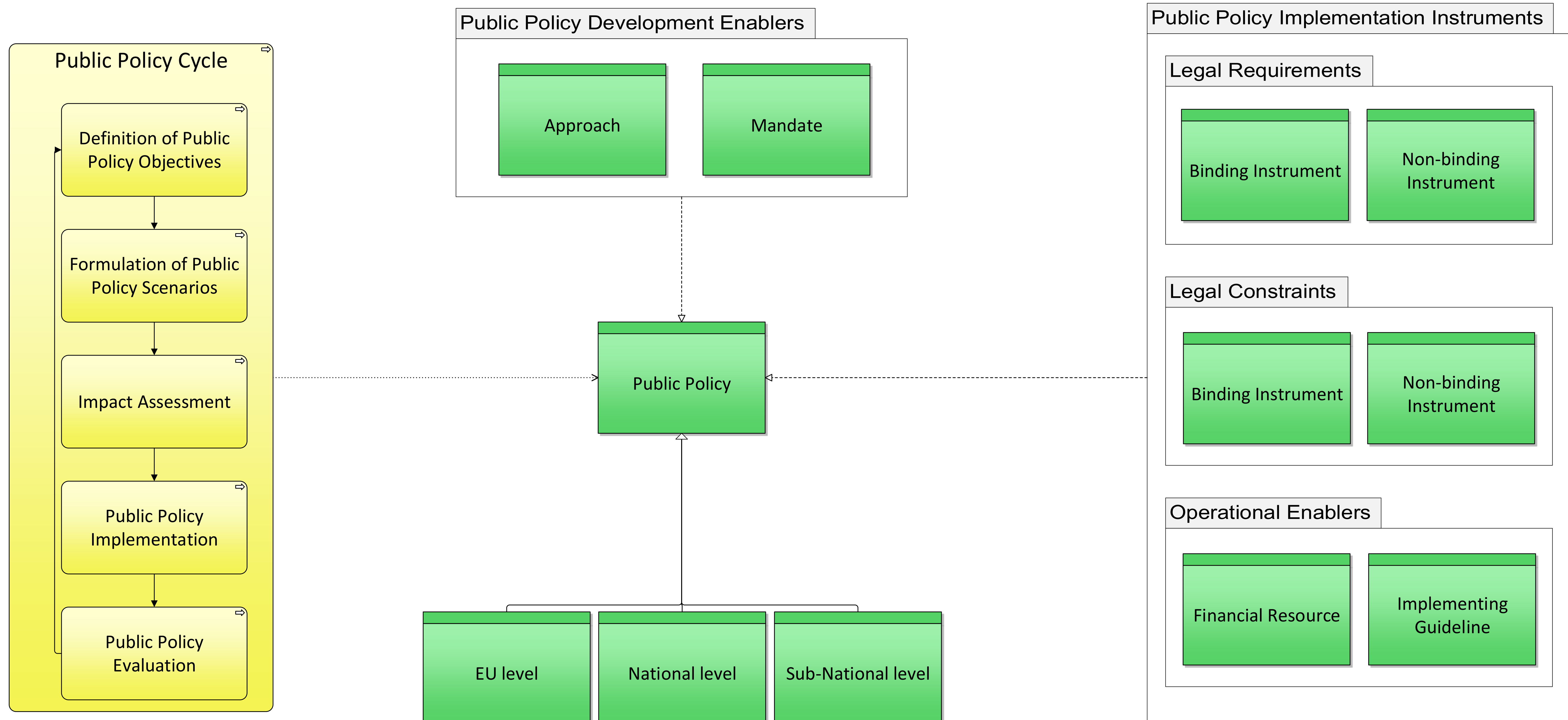
Archimate modelling notation legend:

active structure  
element

behaviour element

passive structure  
element

### Legal View





European  
Commission

## European Interoperability Architecture (EIA) – Reference Architecture

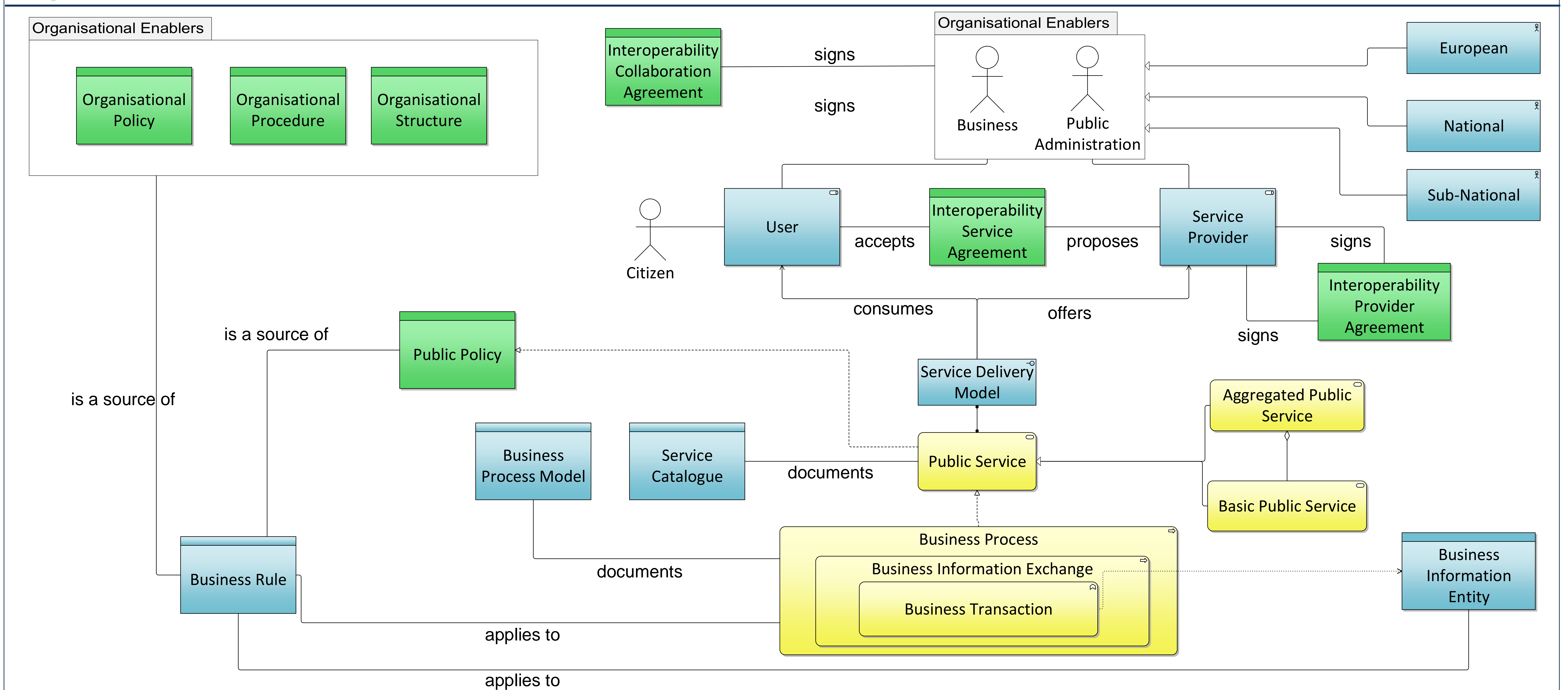
Archimate modelling notation legend:

active structure  
element

behaviour element

passive structure  
element

### Organisational View



## European Interoperability Architecture (EIA) – Reference Architecture

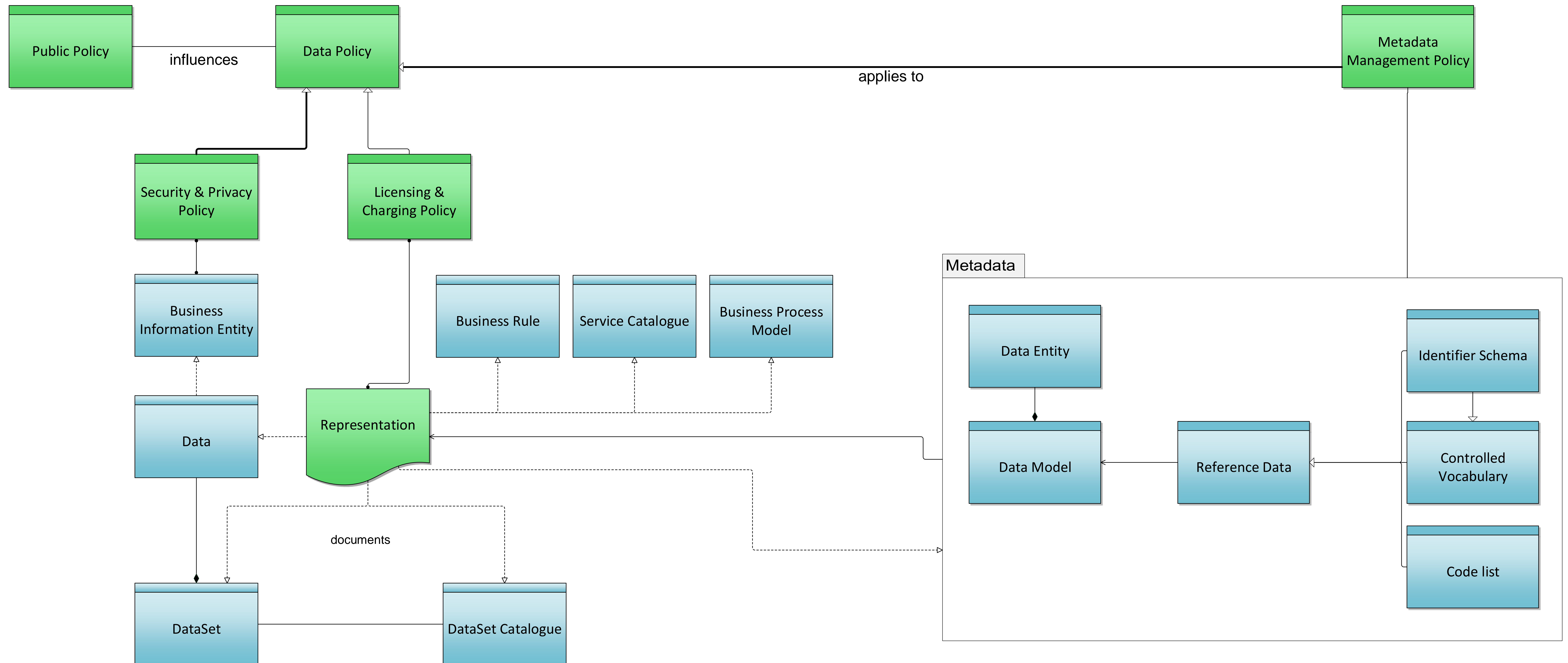
Archimate modelling notation legend:

active structure  
element

behaviour element

passive structure  
element

### Semantic View







European  
Commission

## European Interoperability Architecture (EIA) – Reference Architecture

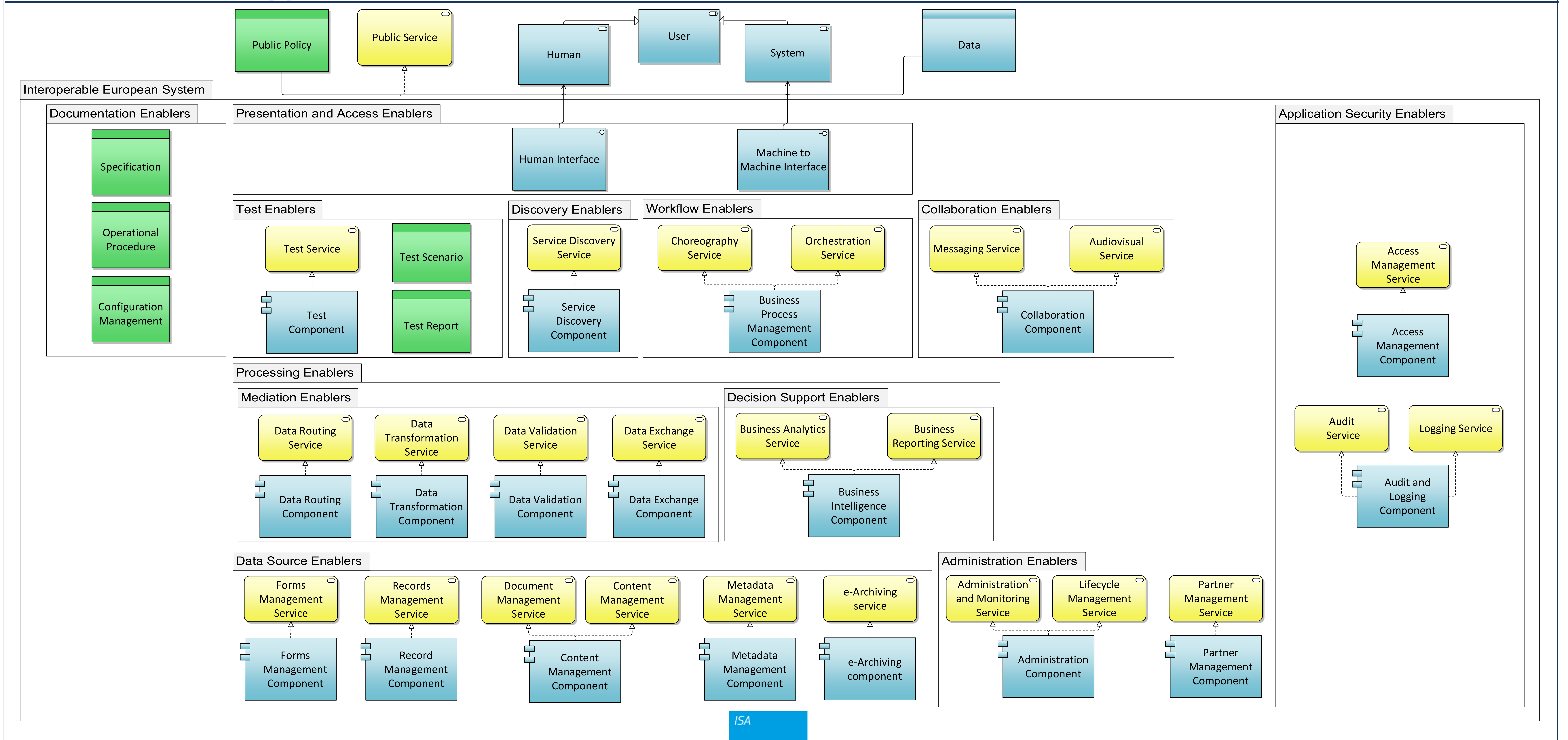
Archimate modelling notation legend:

active structure  
element

behaviour element

passive structure  
element

### Technical View - Application





European  
Commission

## European Interoperability Architecture (EIA) – Reference Architecture

Archimate modelling notation legend:

active structure  
element

behaviour element

passive structure  
element

### Technical View - Infrastructure

