



European Legislation Identifier “ELI”

SEMIC 2014 - Athens

John Dann





- Citizens believe legislation is too complex and often incomprehensible**
 - Expectations are not met
 - Difficult to find in its context
- Public participation: only experts find their ways**
- Experts: dispersed information and not detailed enough**



□ **For Governments and Institutions :**

- Possible limitations of current systems
- Information flow is increasing - performance?
- Disparate knowledge on the current state of legislation
- Legislative work flow often complex and on paper
- Time consuming analysis



❑ **Facilitate the accessibility and participation**

- Access to public Information - PSI Directive
- Citizens and businesses

❑ **Further digitalisation of public services**

- Enrichment of analysis for better decision making
- Exchange and interconnection of data

❑ **Research, Innovation and Development**

- Towards an "Legislative Open Data"

❑ **Increase transparency and efficiency**

- Promote participatory democracy
- Better reflect the needs of users



ELI

European Legislation Identifier





- ❑ **Work started in “European Forum of Official Gazettes”**
- ❑ **Conclusions of the EU Council**
 - “European Legislation Identifier (ELI)” Published in the Official Journal of the European Union on 26 October 2012, “2012/C 325/02”
- **« ELI Task Force » of the EU Council**
 - France, Luxembourg, United Kingdom and Office of Publications EU
- **EU funding for the project starting 2014**

- Easy access to legislation (user-friendly)
- Practical / flexible system for naming and sharing metadata
- Interoperability within a flexible common framework
- Automatic exchange of information
- Human and machine readable



1

- **Unique Resource Identifier - URI**

2

- **Metadata catalogues**

3

- **Structured information linking to other documents – e.g. RDFa**



/eli/ {country}/ {agent}/ {sub-agent}/ {year}/ {month}/ {day }/ {type}/{Natural identifier}/ {Level 1...}/ {Point in Time}/ {Version}/ {language}

Structure of the URI :

- Unique Identifier– **HTTP URI**
- Few constraints
- **Natural hierarchisation**
- Semantic data
- Possibility to « guess » the URI

		Name	
	1	Eli	
Country	2	Country	Use of DCTERMS.ISO For international organ “EU” or “WTO”
	3	Agent	Administrative hierarc parliament etc...
	4	<u>Sub_agent</u>	Administrative hierarc
Reference	5	Year	YYYY Various interpretation: of signature or date of
	6	Month	MM
	7	Day	DD
	8	Type	Nature of the act (law, Various interpretation:
	9	Sub-type	Sub-category of an act



ELI – URI

Luxembourg





❑ Citation of legislative acts by ?

- Professionals
- Citizens

❑ Data available?

- Written by?
- Signed by?
- Dates?
- Types?
- Date of Publication?
- Structure: section, subsection ...
- Various publishing formats

Build your own unique URI



/eli/{country}/

{agent}/

{sub-agent}/

{year}/

{Natural Identifier}/

{type}/

{month}/

{day}/

{Point in time}/

/ {Version}

/ {language}

{Level 1...}/

{Level 2 ...}/

{Level 3...}/

		name	
	1	Eli	
Country	2	Country	Use of DCTERMS.ISI For international organ "EU" or "WTO"
	3	Agent	Administrative hierarc parliament etc...
	4	Sub_agent	Administrative hierarc
Reference	5	Year	YYYY Various interpretation: of signature or date of
	6	Month	MM
	7	Day	DD
	8	Type	Nature of the act (law, Various interpretation:
	9	Sub-type	Sub-category of an act



URI structure Luxembourg :

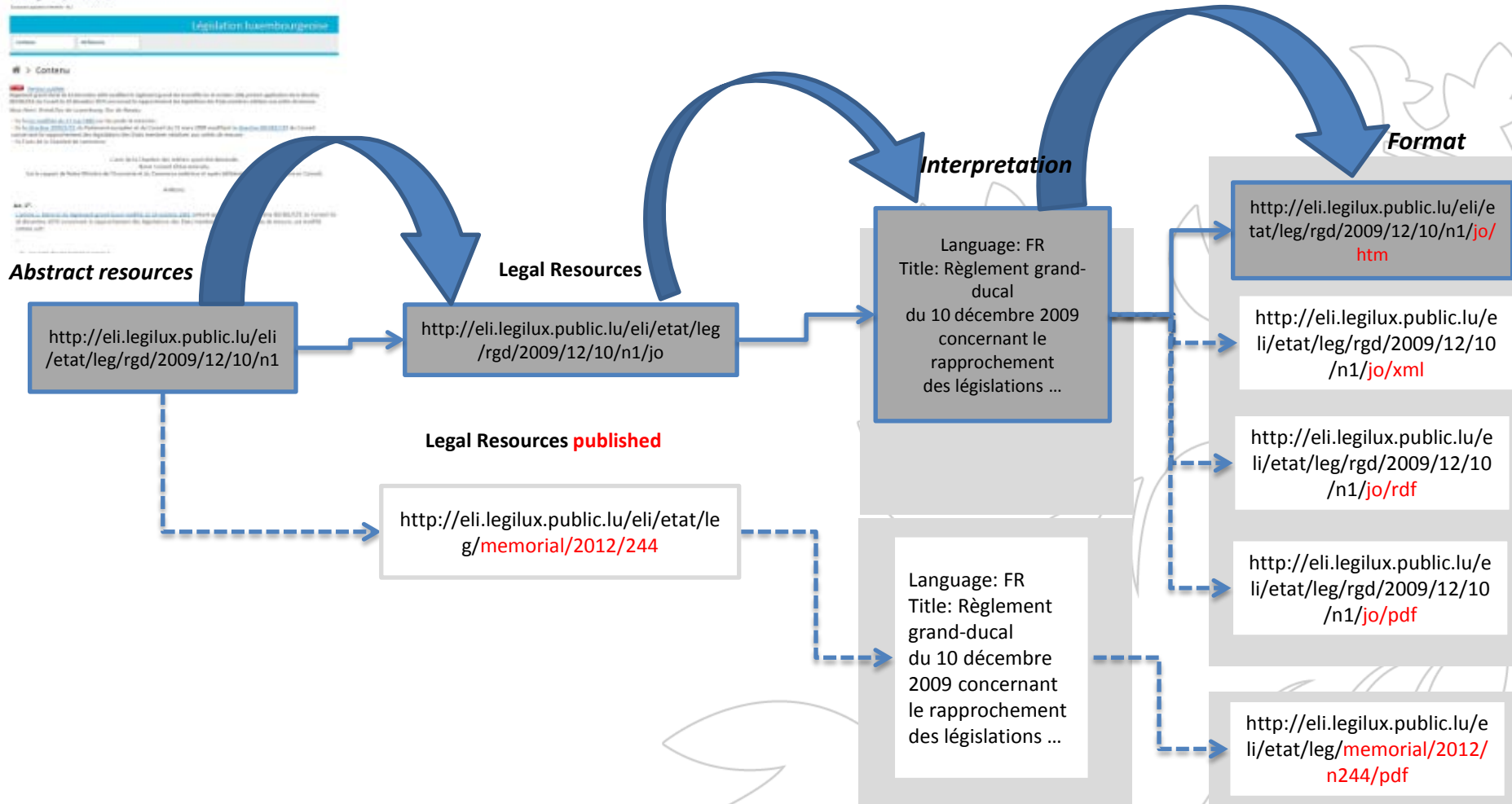
<http://eli.legilux.public.lu/eli/etat/leg/{type}/{année}/{mois}/{jour}/{id}>

Next steps:

- {art.1}
- {consolide}



http://eli.legilux.public.lu/eli/etat/leg/rgd/2009/12/10/n1



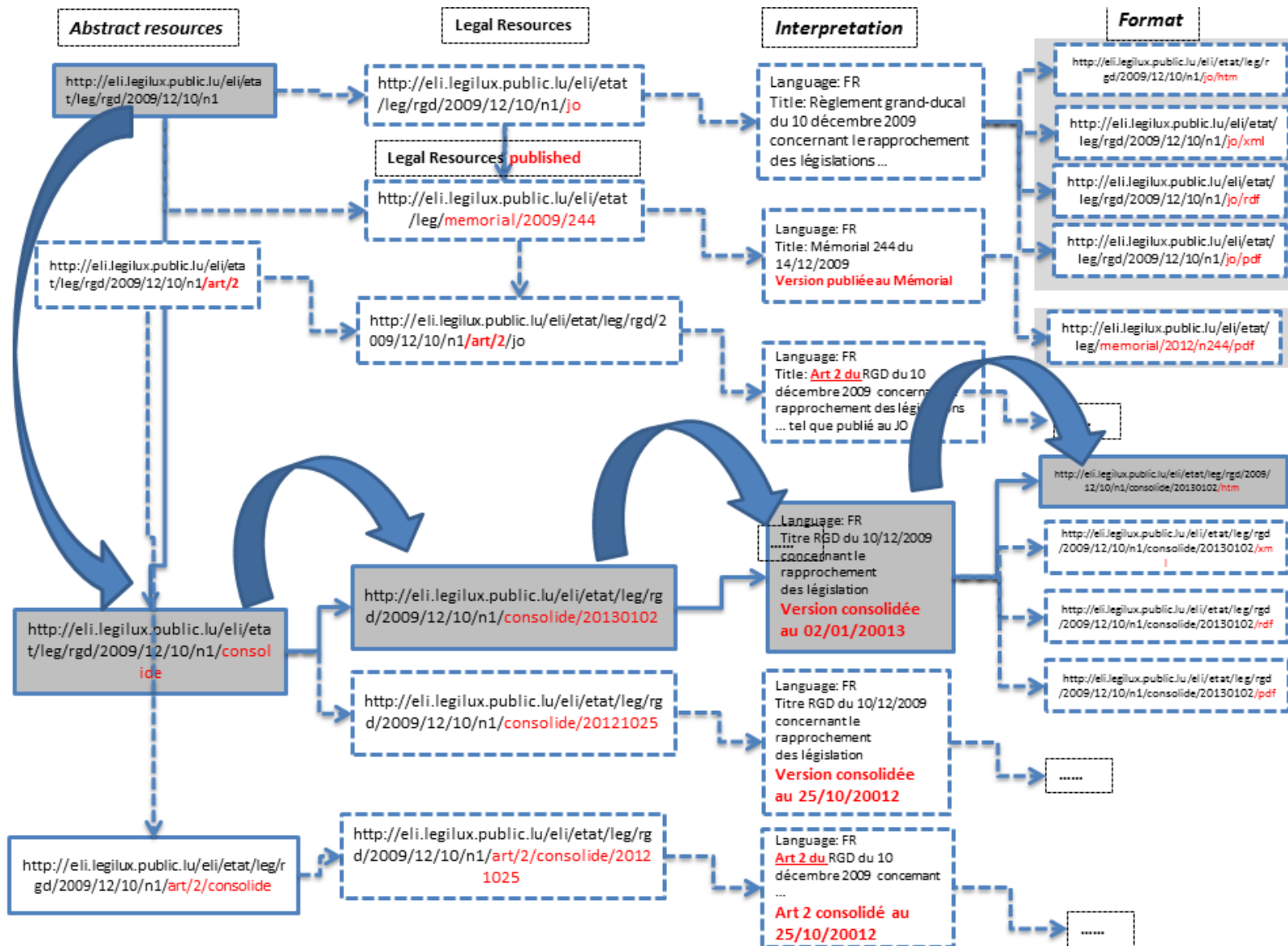


ADDING MORE INFORMATION

Integration of consolidated version



Future ELI Ontology with consolidated acts - Luxembourg





ELI – METADATA





- Description of the essential characteristics of a legislative act
- Set of predefined components
- Shared syntax

Field Name	Description	Field identifier	Cardinalit
Legal resource (language independ Any type of legal resource published in an Official Jo			
<u>Unique Identifier</u>	The identifier of the legal resource. New URI scheme can also be used	<u>id_document</u>	1
<u>Local identifier</u>	The identifier of the legal resource in a local reference system	<u>id_local</u>	0..*
<u>Type of legislation</u>	The type of a legal resource (e.g. directive, règlement grand ducale, law, draft proposition etc. Parliamentary act)	<u>type_document</u>	1
<u>Territorial application</u>	Territory that this legal resource is applicable for (e.g. EU, country / member state, region)	<u>relevant_for</u>	0..*
<u>Agent / Authority</u>	Member State or regional bodies, European Institutions, other bodies who initiated / adopted the legal resource (e.g. Luxembourg Government, European Parliament, Rheinland-Pfalz...)	<u>agent_document</u>	1..*
<u>Sub-Agent / Sub-authority</u>	Administrative hierarchical sub-structure. (e.g. Name of Ministry...)	<u>service</u>	0..*
<u>Subject</u>	The subject of this legal resource	<u>is_about</u>	0..*
<u>Date of adoption</u>	The official adoption or signature date of the document	<u>date_document</u>	1

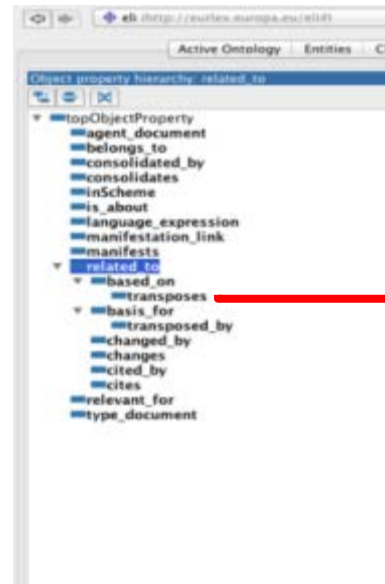


ELI – ONTOLOGY





- Description of the relationships between objects
- Machine readable
- Founded on the FRBR model





ELI – towards a Legislative Open Data

Structured information

Impacts and forecasts

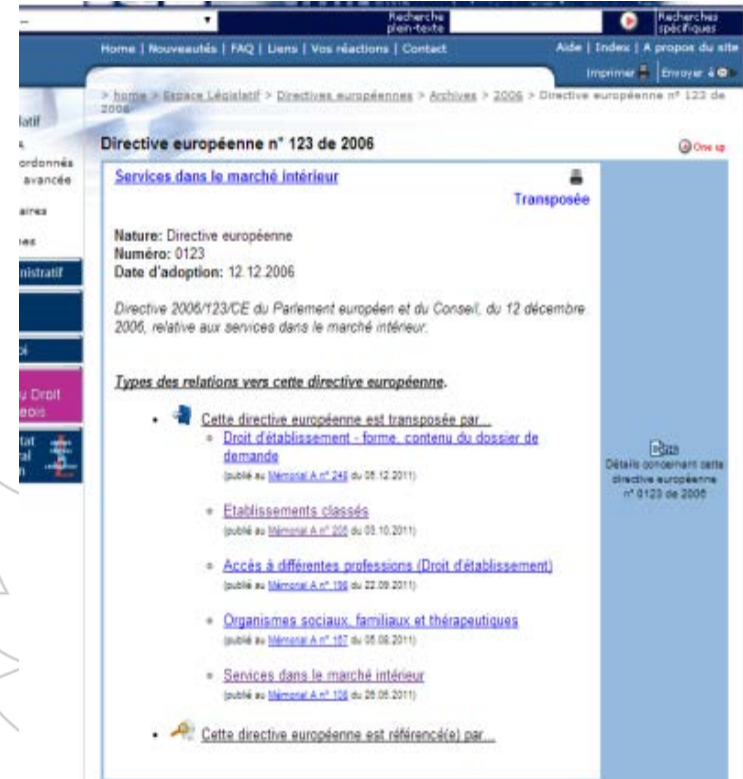
Use case





Transposition Directive

- ❑ Expert research needed
- ❑ Long and time consuming work :
 - Manual analysis of transpositions
 - Manual analysis of the correspondence table article by article ...



Current OJ often not machine readable



2717
MEMORIAL
Journal Officiel
du Grand-Duché de
Luxembourg



MEMORIAL
Amtsblatt
des Großherzogtums
Luxemburg

RECUEIL DE LEGISLATION

A — N° 130

23 juillet 2013

Possibility with structured information



Machine readable



Human readable



```
<?xml version="1.0" encoding="UTF-8" standalone="no" ?>
<Legislation xmlns="http://www.legislation.gov.uk/namespaces/legislation" xmlns:xsi="http://www.w3.org/2001/XMLSchema-instance" xsi:schemaLocation="http://www.legislation.gov.uk/namespaces/legislation http://www.legislation.gov.uk/schem
xml:base="http://www.legislation.gov.uk/id/ukdsi/2013/283">
  <ukm:Metadata xmlns:dc="http://purl.org/dc/elements/1.1/" xmlns:dcterms="http://purl.org/dc/terms/" xmlns:atom:
xmlns:ukm="http://www.legislation.gov.uk/namespaces/metadata">
    <dc:identifier>http://www.legislation.gov.uk/ukdsi/2013/283/made</dc:identifier>
    <dc:subject>Employment terms and conditions</dc:subject>
    <dc:subject>Employment rights</dc:subject>
    <dc:subject>Employment regulations</dc:subject>
    <dc:subject>Business practice and regulation</dc:subject>
    <dc:subject>Legislation</dc:subject>
    <dc:title>The Parental Leave (EU Directive) Regulations 2013</dc:title>
    <dc:language>en</dc:language>
    <dc:publisher>Queen's Printer of Acts of Parliament</dc:publisher>
    <dc:modified>2013-02-15</dc:modified>
    <dc:subject scheme="SIheading">TERMS AND CONDITIONS OF EMPLOYMENT</dc:subject>
  </ukm:Metadata>
  <dc:description>
    These Regulations implement Council Directive 2010/18/EU on the revised framework agreement on parental
    parental leave in the Employment Rights Act 1996 ("the 1996 Act") and the Maternity and Parental Leave
    Memorandum Table of Contents"/>
  <atom:link rel="self" type="application/xml" href="http://legislation.data.gov.uk/ukdsi/2013/283/made/data
  <atom:link rel="http://www.legislation.gov.uk/def/navigation/resources" href="http://www.legislation.gov
  <atom:link rel="http://www.legislation.gov.uk/def/navigation/memorandum" href="http://www.legislation.gov
  <atom:link rel="http://www.legislation.gov.uk/def/navigation/memorandum/toc" href="http://www.legislator
  <atom:link rel="http://www.legislation.gov.uk/def/navigation/act" href="http://www.legislation.gov.uk/uks
  <atom:link rel="http://www.legislation.gov.uk/def/navigation/introduction" href="http://www.legislation.g
  <atom:link rel="http://www.legislation.gov.uk/def/navigation/signature" href="http://www.legislation.g
  <atom:link rel="http://www.legislation.gov.uk/def/navigation/note" href="http://www.legislation.gov.uk/u
  <atom:link rel="http://www.legislation.gov.uk/def/navigation/body" href="http://www.legislation.gov.uk/u
  <atom:link rel="alternate" type="application/vnd+xml" href="http://legislation.data.gov.uk/ukdsi/2013/283/
  <atom:link rel="alternate" type="application/xhtml+xml" href="http://legislation.data.gov.uk/ukdsi/2013/28
  <atom:link rel="alternate" type="application/pdf" href="http://legislation.data.gov.uk/ukdsi/2013/283/made
  <atom:link rel="alternate" type="application/pdf" href="http://www.legislation.gov.uk/ukdsi/2013/283/pdfs/
  <atom:link rel="http://purl.org/dc/terms/tableOfContents" hreflang="en" href="http://www.legislation.gov
  <atom:link rel="http://www.legislation.gov.uk/def/navigation/supersedes" href="http://www.legislation.gov
  </dc:description>
  <ukm:SecondaryMetadata>
    <ukm:DocumentClassification>
      <ukm:DocumentCategory Value="secondary"/>
      <ukm:DocumentMainType Value="UnitedKingdomStatutoryInstrument"/>
      <ukm:DocumentStatus Value="final"/>
      <ukm:DocumentMinorType Value="regulation"/>
    </ukm:DocumentClassification>
    <ukm:Year Value="2013"/>
    <ukm:Number Value="283"/>
    <ukm:Made Date="2013-02-13"/>
    <ukm:ComingIntoForce>
      <ukm:DateTime Date="2013-03-08"/>
    </ukm:ComingIntoForce>
    <ukm:ISBN Value="9780111534663"/>
  </ukm:SecondaryMetadata>
  <ukm:Supersedes URI="http://www.legislation.gov.uk/id/ukdsi/2013/9780111532850">
    <dc:title>The Parental Leave (EU Directive) Regulations 2013</dc:title>
  </ukm:Supersedes>
</Legislation>
```

legislation.gov.uk

Home About Us Browse Legislation New Legislation Changes To Legislation Search Legislation

Title: [] Year: [] Number: [] Type: All Legislation (excluding draft) Search

Advanced Search >

The Parental Leave (EU Directive) Regulations 2013

2013 No. 283 • Whole Instrument

Table of Contents Content Explanatory Memorandum More Resources

Previous Next Plain View Print Options

What Version Status: This is the original version (as it was originally made). This item of legislation is currently only available in its original format.

Original (As made)

Opening Options More Resources

Original Print PDF View more >

STATUTORY INSTRUMENTS

2013 No. 283

TERMS AND CONDITIONS OF EMPLOYMENT

The Parental Leave (EU Directive) Regulations 2013

Made 13th February 2013
Coming into force 8th March 2013

The Secretary of State is a Minister designated(1) for the purposes of section 2(2) of the European Communities Act 1972(2) in relation to employment rights and duties.

The Secretary of State makes the following Regulations in exercise of the powers conferred by section 2(2) of the European Communities Act 1972 and section 76(2) of the Employment Rights Act 1996(3).

In accordance with paragraph 2(2) of Schedule 2 to the 1972 Act and section 236(3) of the 1996 Act, a draft of this instrument was laid before Parliament and approved by a resolution of each House of Parliament.

Human and Machine readable with ELI RDFa



Adding ELI RDF pilot projects to start soon

The screenshot shows the website **legislation.gov.uk** with the following elements:

- Navigation menu: Home, About Us, Browse Legislation, New Legislation, Changes To Legislation
- Search filters: Title, Year, Number, Type (All Legislation (excluding draft))
- Page title: **The Parental Leave (EU Directive) Regulations 2013**
- Subtitle: 2013 No. 283 ▶ Whole Instrument
- Buttons: Table of Contents, Content, Explanatory Memorandum, More Resources
- Navigation: Previous, Next
- Version selection: What Version (Latest available (Revised), Original (As made) - selected)
- Opening Options: Open whole Instrument
- More Resources: Original Print PDF
- Status: This is the original version (as it was originally made). This item of legislation is currently o
- Section title: **STATUTORY INSTRUMENTS**
- Section number: **2013 No. 283**
- Section subtitle: **TERMS AND CONDITIONS OF EMPLOYMEI**
- RDFa Developer section (circled in red):
 - Data(38) | Not | Query
 - Examples
 - "http://www.legislation.gov.uk/id/ukpga/1972/68/section/2"^^<xsd:anyURI>
 - "http://www.legislation.gov.uk/id/ukpga/1996/18/section/76"^^<xsd:anyURI>
 - eli:date_document
 - eli:date_entry-in-force
 - eli:date_publication
 - eli:id_document
 - eli:id_local
 - eli:related_to
 - eli:transposes
 - "http://eli.budabe.eu/eli/dir/2010/18/oj"^^<xsd:anyURI>
 - eli:type_document
 - owl:sameAs
 - http://www.legislation.gov.uk/uksi/2013/283/made>
 - ><http://www.legislation.gov.uk/uksi/2013/283/made/data.htm>



- ❑ Possibility to view links
- ❑ Computerized impact analysis
- ❑ Information available to the needs of the audience:
 - Public: consolidated acts in force
 - Experts: detailed information
 - Government
 - ...

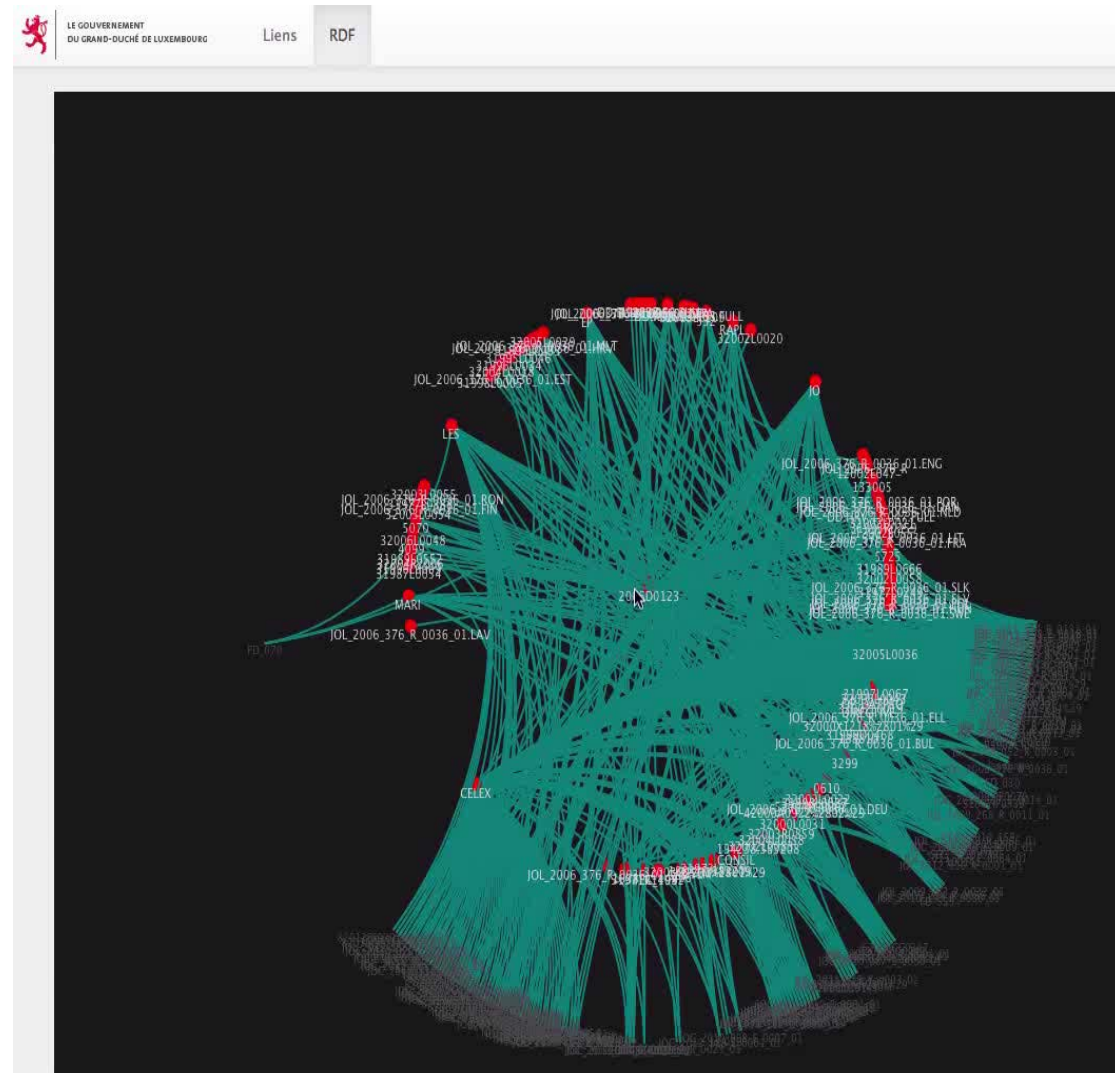
The screenshot displays the website eli.legilux.public.lu. The main content area is titled "Directive 2006/123/CE" and "Liens entre textes". It features a network diagram with a central node "2006/123/CE" connected to several other nodes: "rgd/2011/1201", "2011/09/13/nt", "2011/07/08/n2", "2011/05/24/nt", "2011/06/02/nt", "1990/06/10", "1987/07/16/n", and "2006/07/12/Code du travail".

The "Détail" panel on the right shows the document's title "eli.legilux.public.lu" and "Version publiée". The content is a law from September 2, 2011, regarding access to professions. The text includes a list of modifications to the Code du travail and other laws, and concludes with the signature of the Grand-Duc de Luxembourg and the Chamber of Deputies.

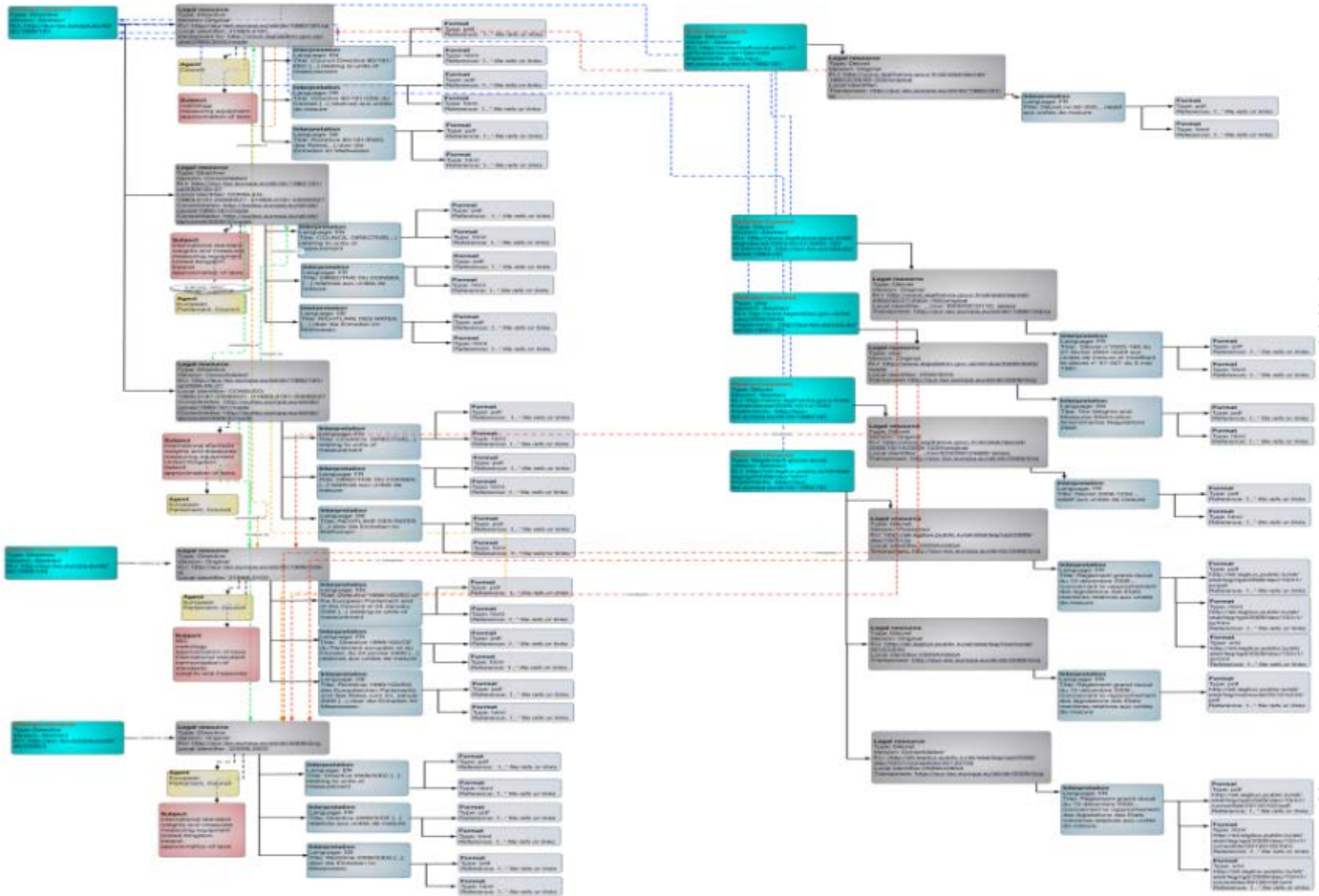


Complexity of legislative interconnections :

- Impact analysis - the only efficient possibility is by computers
- Possibility to connect with other data e.g.
 - Statistics
 - ...



Possibility with structured information Exchange of information



Directive transposition at national level

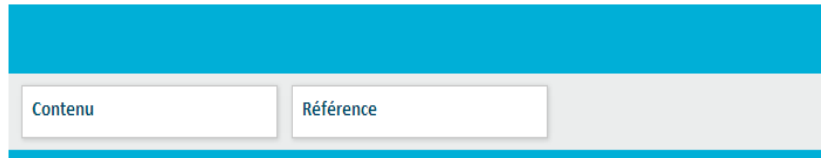
Exchange of information



□ Data provided by the EU Publications Office and displayed on national OJ

eli.legilux.public.lu

European Legislation Identifier - ELI



🏠 > Transposition

Identifiant: 32006L0123

Date du document: 2006-12-12

Date d'entrée en vigueur: 2006-12-28

Date de fin de validité: 9999-12-31

27.12.2006 FR Journal officiel de l'Union européenne

DIRECTIVE 2006/123/CE DU PARLEMENT EUROPÉEN ET DU CONSEIL
du 12 décembre 2006
relative aux services dans le marché intérieur

LE PARLEMENT EUROPÉEN ET LE CONSEIL DE L'UNION EUROPÉENNE,
vu le traité instituant la Communauté européenne, et notamment son article 47, paragraphe 2, première et troisième

OPUE "Cellar" Base de données de l'OPUE



EUR-Lex

L'accès au droit de l'Union européenne

À propos d'EUR-Lex

EUROPA > Législation et publications de l'UE > EUR-Lex > Résultats de la recherche > EUR-Lex - 32006L0123

Accueil Journal officiel Droit de l'UE et documents connexes Droit national Procédures législatives

Retour à la liste de résultats

Document 32006L0123 > Sauvegarder dans Mon EUR-Lex Ajouter aux favoris Download

Notice bibliographique Texte Procédure Documents liés Tout

Titre et référence

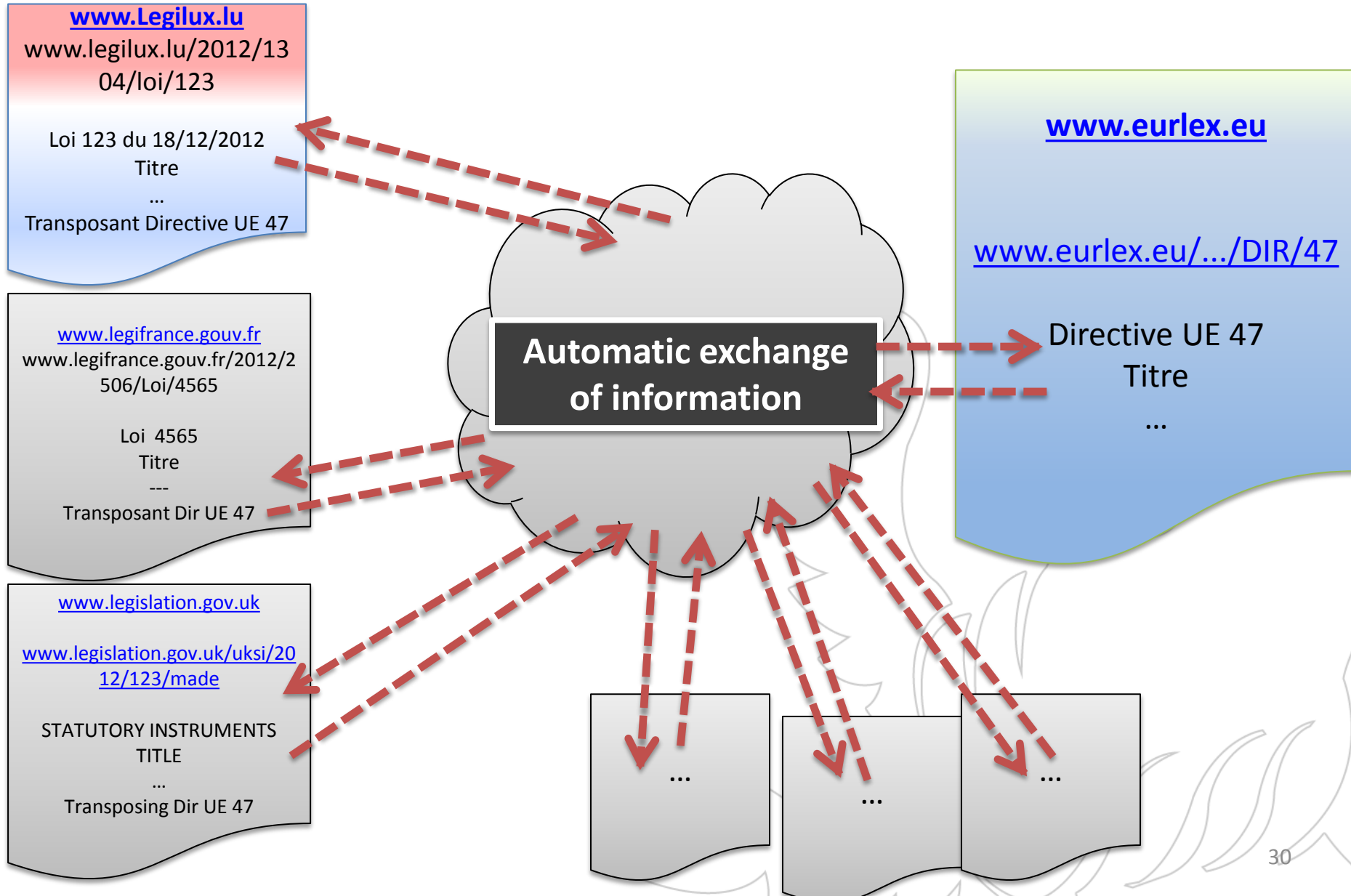
Directive 2006/123/CE du Parlement européen et du Conseil du 12 décembre 2006 relative aux services
JO L 376 du 27/12/2006, p. 36-68 (ES, CS, DA, DE, ET, EL, EN, FR, IT, LV, LT, HU, MT, NL, PL, PT, SK, édition spéciale bulgare: chapitre 13 tome 058 p. 50 - 82 édition spéciale roumaine: chapitre 13 tome 058 p. 50 - 82 édition spéciale croate chapitre 13 tome 047 p. 160 - 192)

Langues, formats et lien vers le JO

	BG	ES	CS	DA	DE	ET	EL	EN	FR	GA	HR	IT	LV	LT
HTML														
PDF														
Journal officiel														

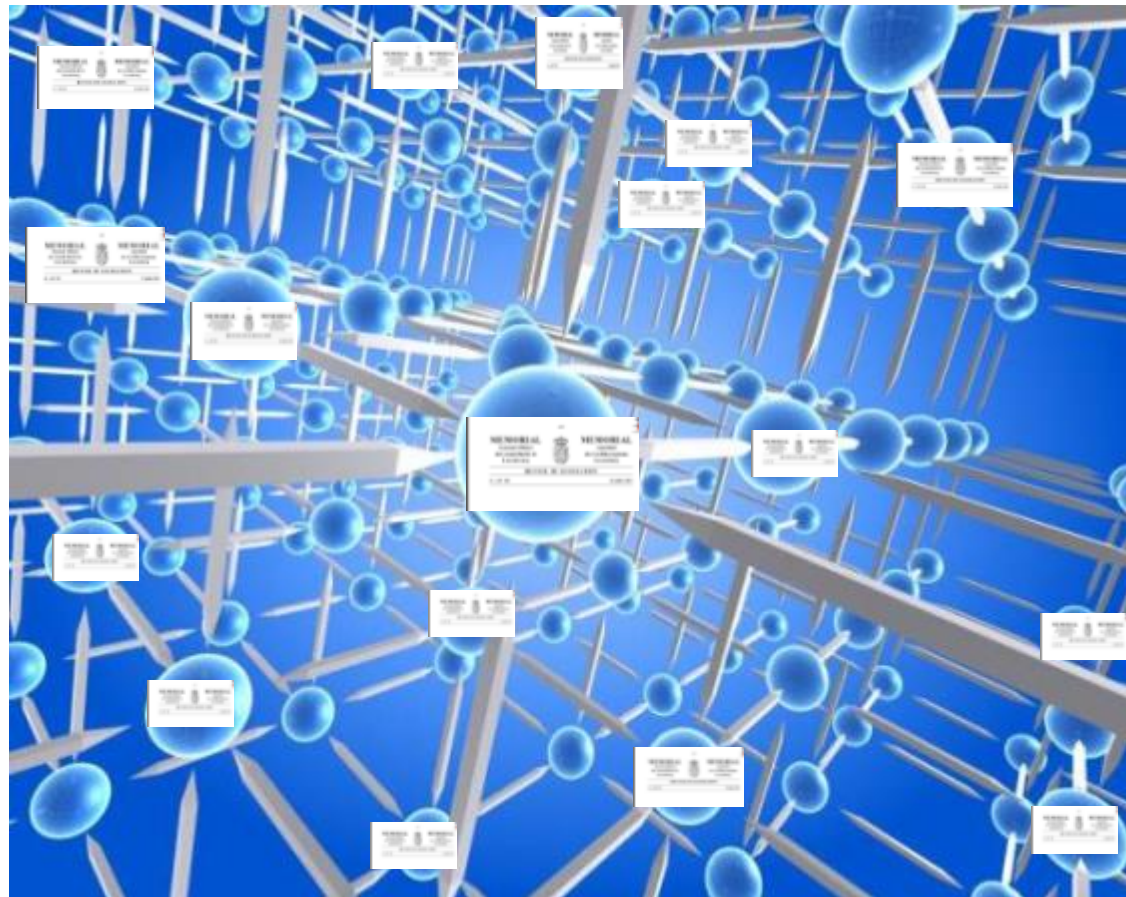
Pour vérifier la version électronique ayant valeur juridique de ce JO, cliquez sur l'icône ci-dessus

Goal: exchange of information between different systems





❑ Never again “Lost in Legislation”





ADVANTAGES





ELI enables a far greater degree of semantic interoperability:

- between EU/national legislation systems
- between legislation systems of different Member States
- between legislation systems and many other systems containing data that relates to legislation



- ELI ... develops the Semantic Web
- ELI ... flexible for all national OJ
- ELI ... easy implementation - small steps
- ELI ... interconnected OJ
- ELI ... helps to find legislation easier
- ELI ... human and machine readable
- ELI ... prepares the future



MERCI

john.dann@eco.etat.lu

