

Identity and Access Management Platform



By
*Flemish
government*

29 March 2017, Lisbon, Portugal



Identity and Access Management Platform by the Flemish government

Agenda

- Context
- Impact and results
- State of play
- Design
- Governance
- Sustainability
- Next Steps



Identity and Access Management Platform by the Flemish government

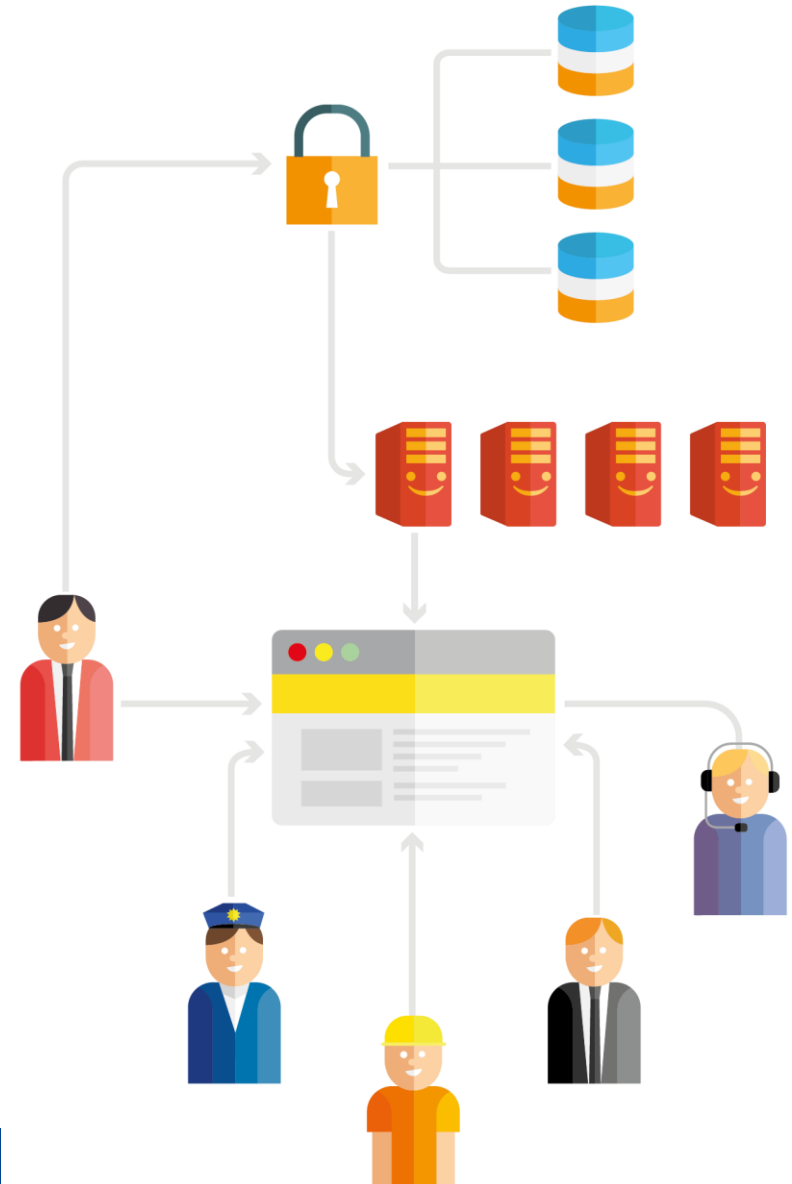
Context

- 1 central online platform with
2 combined services for:
- Access control management
 - Identity management

**Reliable in every sense
&
Useroriented and -driven**

Also provides:

- A centralised and dedicated helpdesk
- Support for integration, transition, operations, productdevelopment, ...



Access control management

Kies manier van aanmelden

Kies hieronder hoe u wil aanmelden. Klik op "meer info" voor uitleg over die manier van aanmelden of op de knop "hulp nodig?" (rechts) voor veelgestelde vragen over aanmelden of om contact op te nemen met de helpdesk.

<p>> Beveiligingscode via mobiele app</p> <p>UW LAATSTE KEUZE</p> <p>Eerste gebruik? Manier van aanmelden eerst activeren Meer info ?</p>	<p>> eID en aangesloten kaartlezer</p> <p>VEILIGSTE KEUZE</p> <p>Eerste gebruik? Manier van aanmelden eerst activeren Meer info ?</p>
<p>> eID en draadloze kaartlezer</p> <p>Eerste gebruik? Manier van aanmelden eerst activeren Meer info ?</p>	<p>> Beveiligingscode via SMS</p> <p>Eerste gebruik? Manier van aanmelden eerst activeren Meer info ?</p>
<p>> VO-token (Vlaamse overheid)</p> <p>Meer info ?</p>	<p>> Federaal token</p>

- Different solutions for strong authentication
- Recognisable
- Reliable
- Secure
- Single-sign-on

- Over 200 applications
- About **500.000 authentications** per month
- About **50.000 unique users** per month
- About **50 million transactions** per month

- Federation through
 - SAML2.0
 - OpenIDConnect

Identity management

- Centralised identity management platform
- Delegated user and role administration
- Reusing authentic sources
- Supporting the only once principle

- Over **700 roles**
- For over **150 applications**

- In house build platform
- Based on open source,
- Customizable and scalable IDM solution

The screenshot shows the 'Vlaanderen' Gebruikersbeheer Economische Actoren web application. The header includes the Vlaanderen logo and the title 'Gebruikersbeheer Economische Actoren'. Below the header is a navigation bar with links: 'Organisatie', 'Gebruiker', 'Gebruikersrechten', and 'Help'. The main content area is titled 'Zoek gebruikersrecht toekenning'. It features a search form with the following fields and labels: 'Organisatie:' (with a dropdown arrow), 'Gebruikersrecht:' (with a dropdown arrow), 'Begindatum:', 'Einddatum:', 'Aangemaakt door:', 'Aangemaakt op:', 'Laatst gewijzigd door:', and 'Laatst gewijzigd op:'. A 'Zoek' button is located at the bottom of the form. The 'Gebruikersrecht:' dropdown is open, showing a list of roles: 'DWSE Organisatie medewerker', 'DWSE Organisatie verantwoordelijke', 'Databank Ondergrond Vlaanderen Externe Gebruiker', 'Doelgroep Monitor EA', 'Doelgroep Monitor Type Organisatie en Domein EA', 'Doelgroep Verantwoordelijke', and 'Doelgroep Verantwoordelijke Type Organisatie'. The footer of the application includes the Vlaanderen logo, the text 'Vlaanderen verbeelding werkt', and the URL 'Vlaanderen.be/gebruikersbeheer is e' followed by 'uitgegeven door [agentschap Facilitair Bedrijf](#)'.

Identity and Access Management Platform by the Flemish government

State of play

Budget

All key functionalities, processes, development and maintenance are **financed centrally**

No volume driven cost

Integrating partners only pay for application specific development (f.e. specific web services)

Users

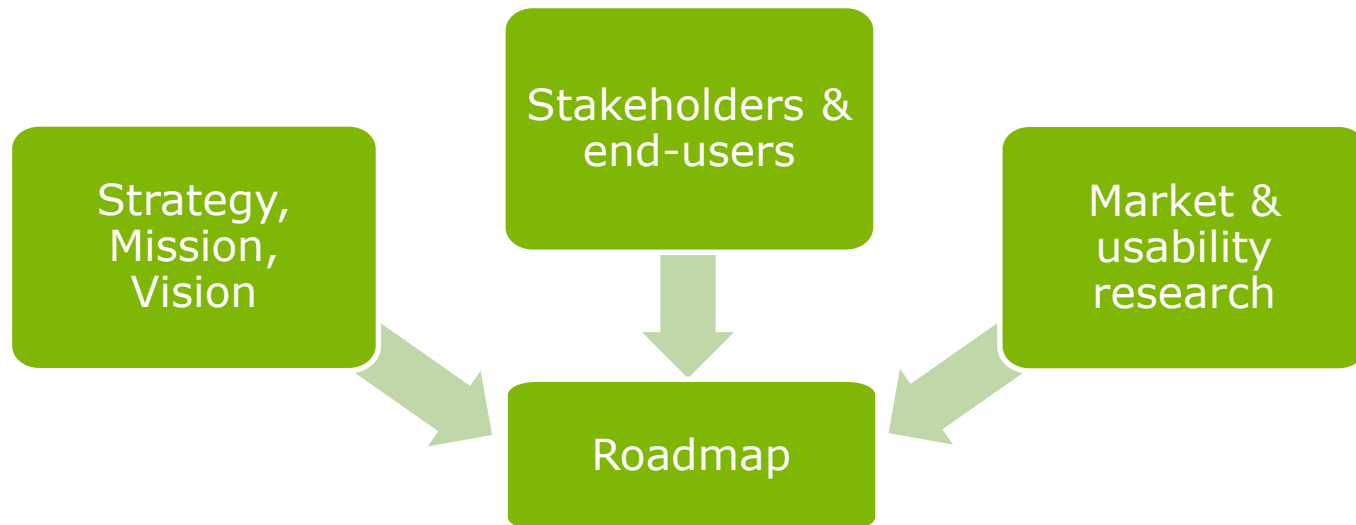
End-users:

- **Every citizen worldwide:**
 - For themselves, in their own name
 - For a legal entity:
 - All enterprises (not only Flemish)
 - All Flemish government administrations
 - All Flemish municipalities, other local governments, ...
 - All Flemish schools

Integrating partners:

- All Flemish government administrations
- All Flemish municipalities, other local governments, ...

Service governance



Identity and Access Management Platform by the Flemish government

Next steps

End-users:

- End-user adoption and “education” of the people
- Legislation on digital processes and privacy

Integrating partners:

- Continuous organisation and application onboarding without loss of quality
- Easy opt in process for integrating partners

Functionalities:

- Mobile and API driven application support
- Maximisation of selfmanagement for citizens as well as legal entities
- Smart single-sign-on based on information in authentic sources
- Extension of the IDM platform with a solution for mandates between:
 - physical persons
 - legal entities

Continuously balancing technical opportunities, legal requirements and userfriendliness

Contact Details



More information on

- <https://overheid.vlaanderen.be/gebruikersbeheer>
- <https://overheid.Vlaanderen.be/toegangsbeheer>



Contact us at gebruikersbeheer@vlaanderen.be