

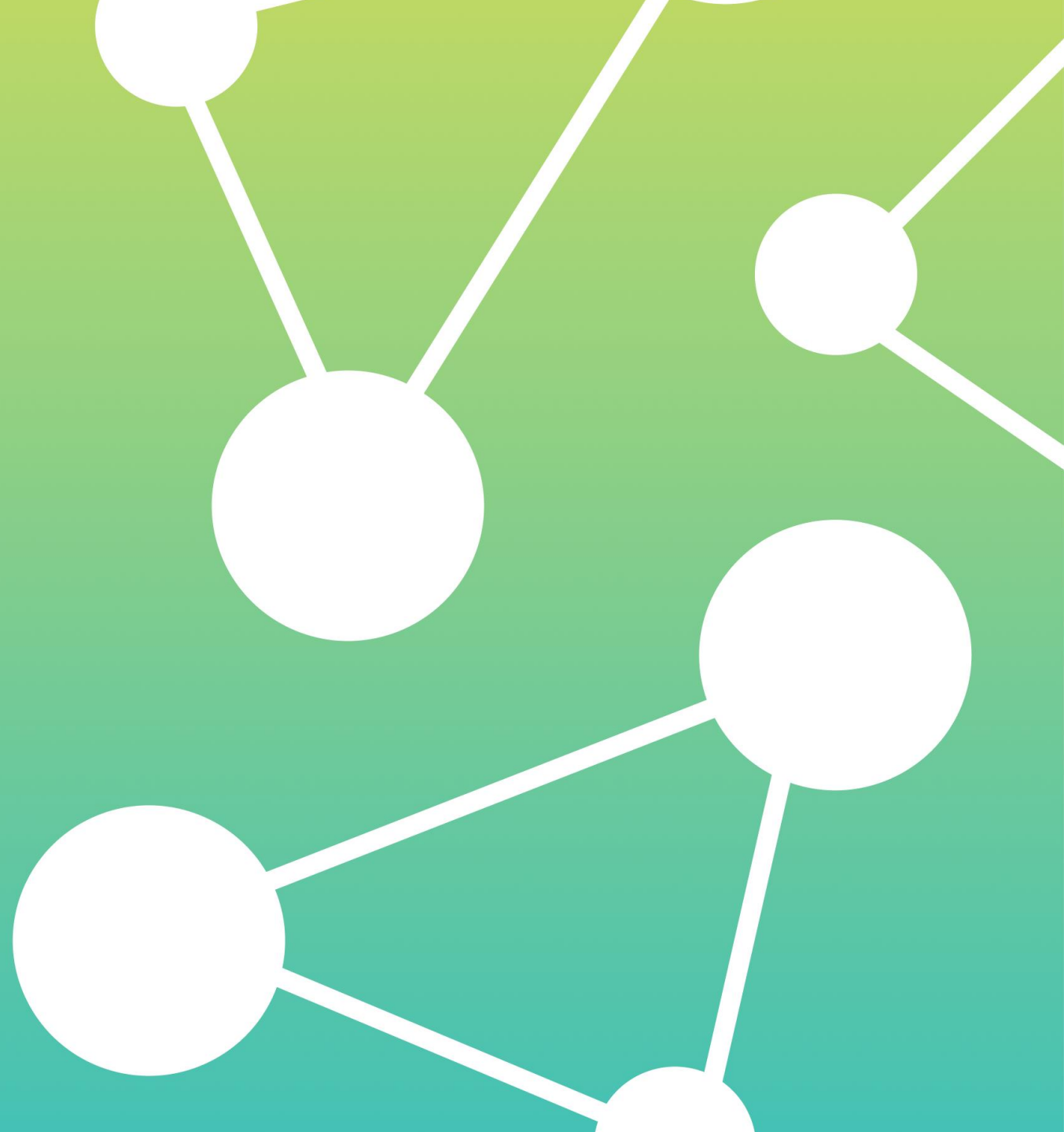


# GovTech Connect

Transforming Government, Together



City and me  
Presentation



# Key Info



**City and Me**

<https://cityandme.app/>



Nis, Serbia



10< People



Aleksandar Stamenkovic



GovTech  
Connect

Introducing the  
Next Generation of City-Wide Connectivity



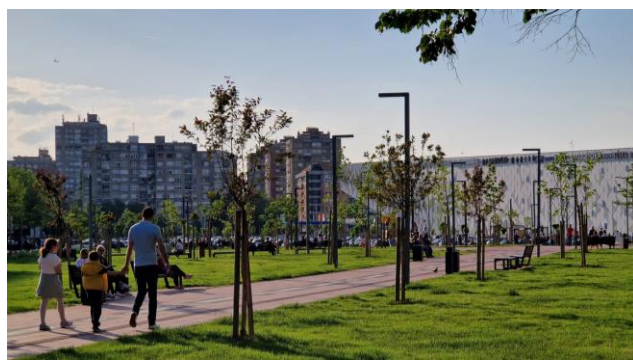


Niš



Kragujevac









# WE ARE CITY&ME!



# City&Me team

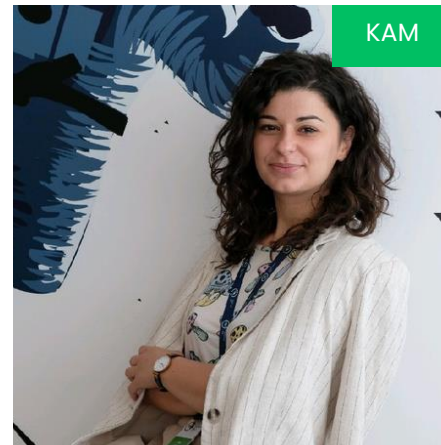
---



Branko



Aleksandar



Danica



Snežana





## CHALLENGES OF URBAN AREAS

- Lack of Citizen Participation and Civic Engagement
- Traffic Jams and Transport-Related Greenhouse Gas Emissions
- Lack of Recycling Awareness
- Lack of Effective Rewarding Programs





# City&Me for citizens

01

Participation in decision-making at the building level or local community level

02

Easy problem reporting, clear two-way communication and information

03

Rewarding tokens for “green activities” such as walking, cycling and recycling

04

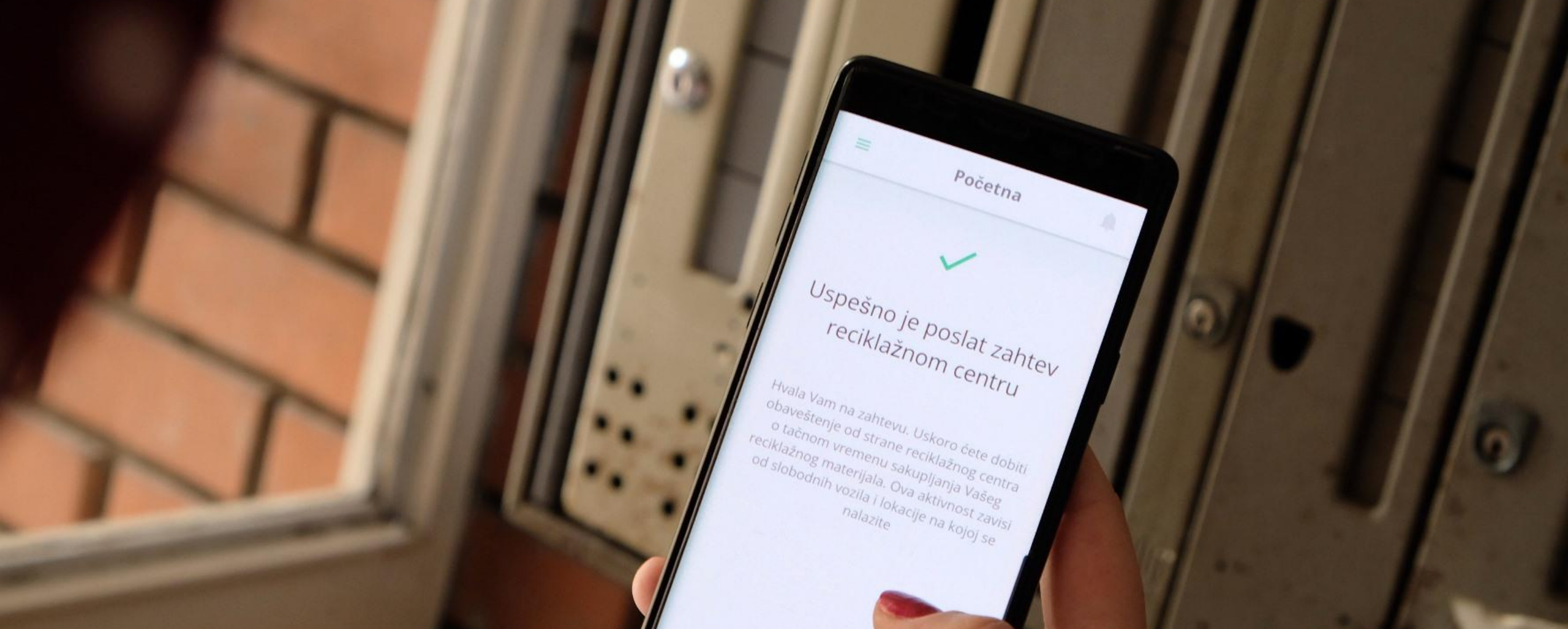
Token exchange for vouchers, coupons, as well as purchases within the app

05

Payment of communal costs and costs of living within the app

06

Trees in digital urban forest



City&Me is a digital platform for interactive and sustainable communities that links citizens and the city with the aim to foster a sense of community and allow people to be connected to the city they live in.



# City&Me for cities

01

Two-way communication  
between the city and its citizens

02

Conducting polls, voting and  
decision-making at the local level

03

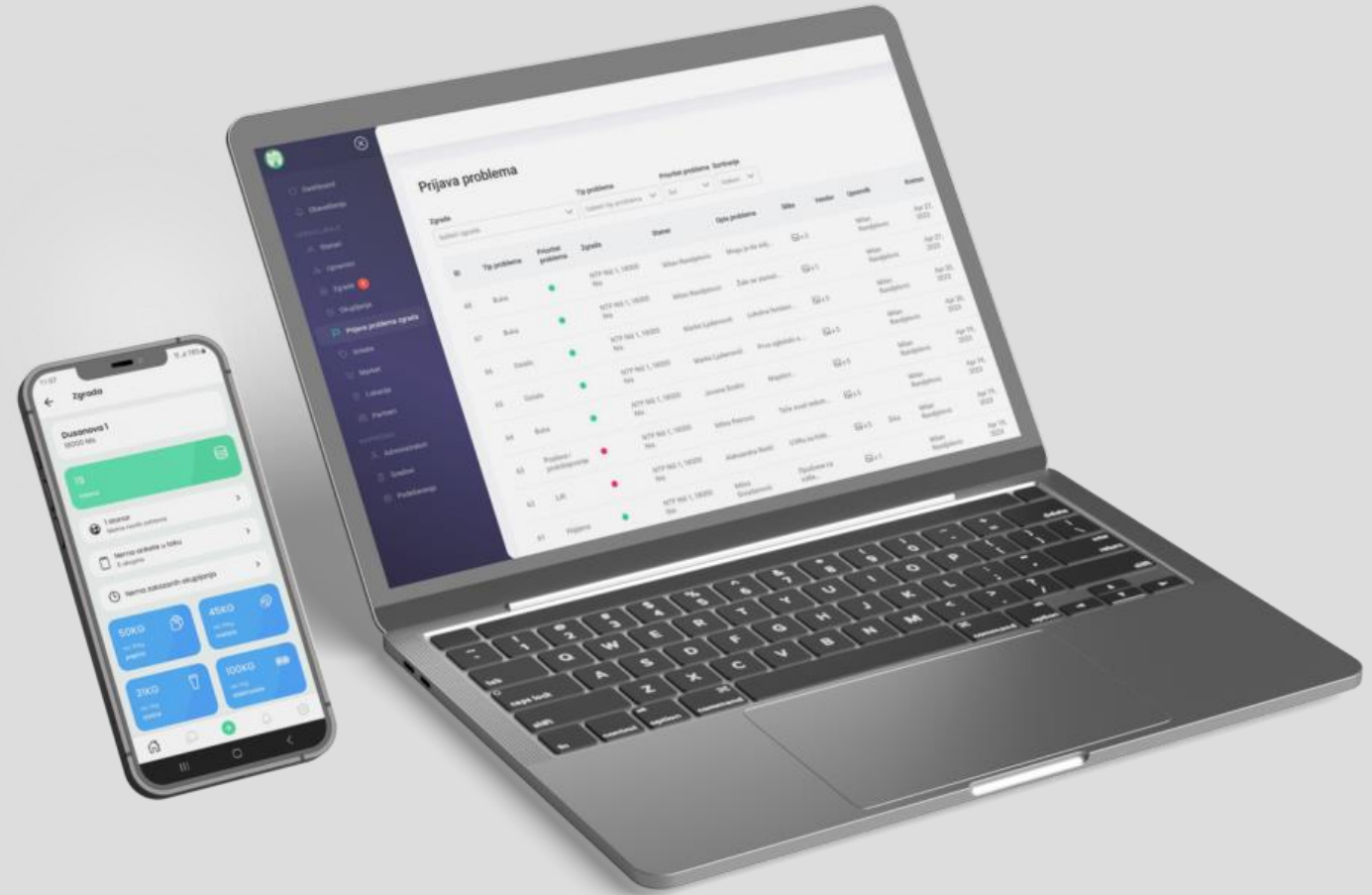
Managing reported problems  
and communal issues

04

Rewarding program for citizens  
based on city token system

05

Relevant statistical data monitoring  
based on citizens' activities





Social impact



Environment



# Business model



Cooperation  
with cities



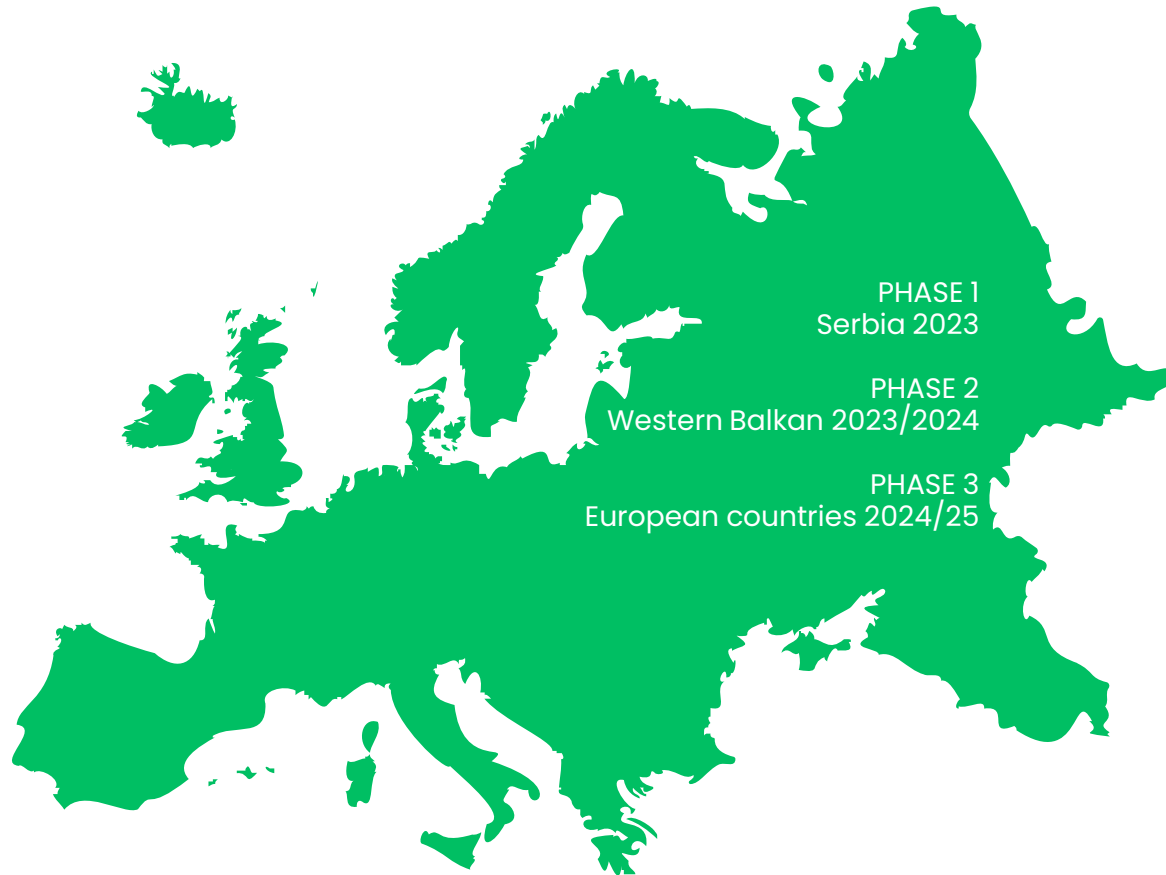
Subscriptions

Fundraised: 71.325\$

Founders' investment: 16.500\$

First incomes: 13.350\$

# Plans for next 12 months



01

Optimization in a real condition  
and prototyping on European level

02

Adopting  
Go-to-market and Monetization strategy

03

Access to finance  
for business growth

04

Sales activities  
with focus on European market

We need

Investment and Partnership | Prototyping | Joint development



---

# Thank you!

We empower communities to connect, collaborate  
and create a sustainable future.



## Address

City and Me doo Nis  
Science and Technology Park Nis  
Aleksandra Medvedeva 2A  
18104 Nis, Republic of Serbia

## Telephone

+381 64 6446 158

## Web

[cityandme.app](#)