

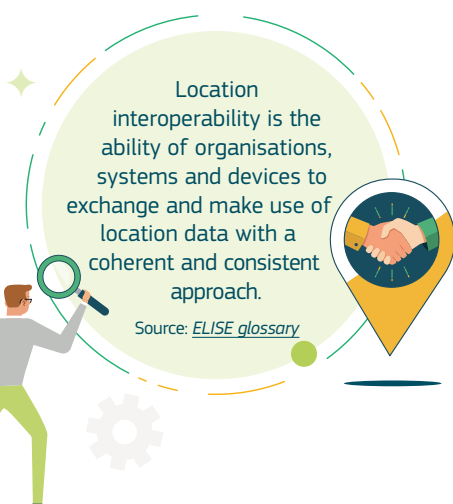


LOCATION INTEROPERABILITY FRAMEWORK OBSERVATORY

Monitoring adoption of location interoperability good practices in European public administrations

WHAT IS "LIFO"?

LIFO is the short name for the **Location Interoperability Framework Observatory**. LIFO monitors the implementation of location interoperability in the European public administrations based on the recommendations and best practices in the **European Union Location Framework - EULF Blueprint** - the European Interoperability Framework in the geospatial domain.



Location interoperability is the ability of organisations, systems and devices to exchange and make use of location data with a coherent and consistent approach.

Source: *ELISE glossary*

Location Interoperability is increasingly relevant for the policies of the European Union as it can facilitate:



the **digital transformation** of organisations, providing seamless European digital public services



strengthening the **European data economy** and **single digital market**, including the European data spaces exploitation



the overcoming of the many **environmental challenges** within the scope of the European Green Deal

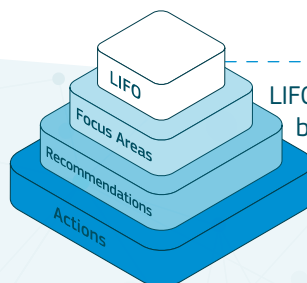


the stimulation of **greater cohesion** and regional integration in Europe

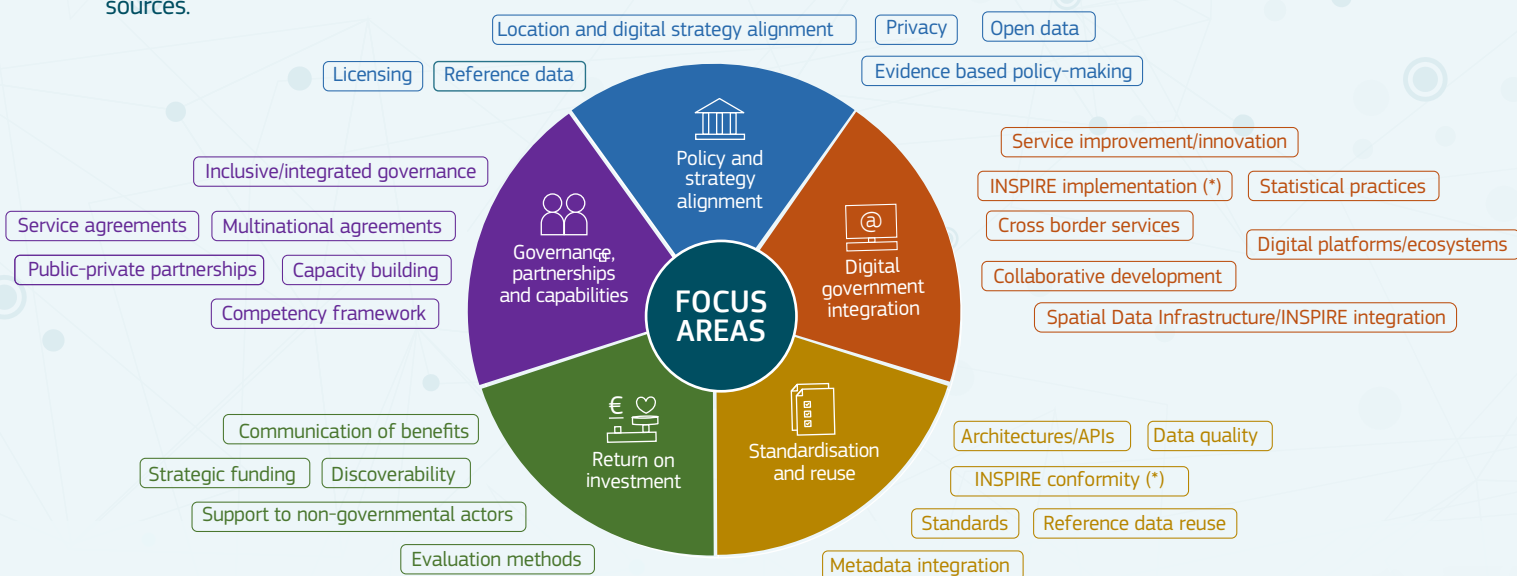
WHAT IS THE OBSERVATORY MEASURING?

LIFO analyses a wide range of topics related to Location Interoperability in policy and digital public services, based on:

- **Primary indicators**, coming from dedicated questionnaires;
- **Secondary indicators** (*), reusing information from existing sources.

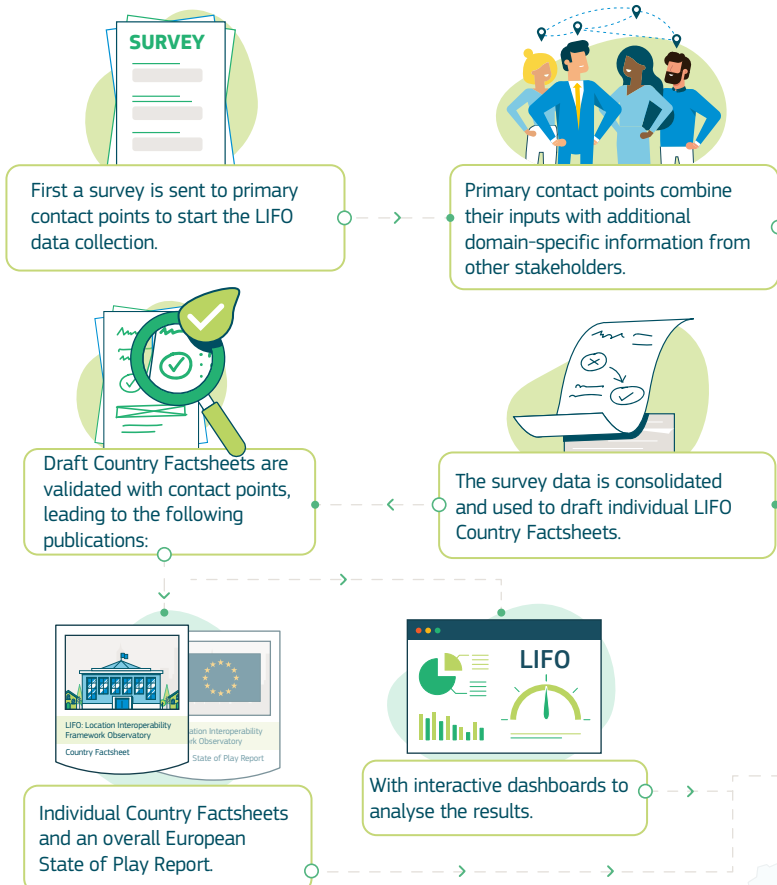


LIFO's analytical model is based on a hierarchy of **indicators and indexes**.



HOW IS LIFO RUN?

LIFO would not be possible without the participation of volunteer countries that supply and validate the information obtained at various points in a well-established process:



From 10 participating countries in 2019, to 23 in 2020.

- Countries participating in both LIFO 2019 and LIFO 2020
- Countries participating for the first time in LIFO 2020

2 products, 1 common objective: to foster **European Location Interoperability**

LIFO results and emerging best practices are incorporated in the EULF Blueprint, ensuring that the guidance remains up-to-date.

WHAT DOES LIFO OFFER YOU?



Although LIFO interacts primarily with European public administrations, its benefits span across all society:

- Public Administrations**: I understand better how to create public value from location data, and how to integrate it with data from other sources.
- Businesses**: The market knowledge provided by LIFO helps me to improve my collaborations with Public Administrations.
- Citizens**: I get access to better public services that improve my daily life, thanks to governments' innovations using location-related information.

Location Interoperability fuels digital transformation across sectors and countries in Europe.



Visit the [LIFO space on Joinup](#) to find out more.