



e-TrustEx

Demo Framework

Author(s) : Maarten DANIELS
Reviewed by :

Approved by :
1.00 version :

Date: 24/11/2014



Document history

Version	Date	Comment	Modified pages
1.00	30/09/2012	Creation for e-TrustEx v1.0.0	All pages

CONTENTS

1. Overview	3
2. Test Cases.....	3
2.1. <i>Instructions e-TrustEx.....</i>	<i>3</i>
2.2. <i>Instructions SoapUI</i>	<i>3</i>

1. OVERVIEW

The e-TrustEx demo framework consists of test cases to assist the user in running test cases for the e-TrustEx platform.

2. TEST CASES

The test cases in this demo suit are bundled as a SoapUI project that the user can execute after installing and configuring the e-TrustEx platform.

2.1. Instructions e-TrustEx

Install the e-TrustEx platform either on a local machine or a test server as detailed in the instruction manual.

Ensure that all the database configuration scripts are executed, including the scripts to configure the demo user details.

2.2. Instructions SoapUI

2.2.1. Installation

SoapUI is an open source test tool for web-service testing. A free version without restrictions is available and this free version is sufficient to run the projects in this package.

Download SoapUI free via <http://www.soapui.org/> and follow the installation instruction on the website.

The demo suite contains a script to clean the test messages from the e-TrustEx database. Since this script requires a database connection to be created from a groovy script, the proper database driver needs to be installed. To install the MySQL Connector/J, go to <http://dev.mysql.com/downloads/connector/j/> and choose the proper version. Extract the .jar file to the SoapUI "lib" installation folder and restart your SoapUI instance before running the tests.

2.2.2. Configuration

Inside SoapUI, create a new workspace (File->New Workspace) and load the demo project in this package (File->Import Project).

The project is based on the user details as defined in the database configuration script. If another username/password is required, it can be configured in the

Request Properties of each service request (and the database scripts that delete the test messages will need updates as well).

The project is based on the e-TrustEx platform to be installed on the localhost. If another server is used, update the WSDL URLs and service endpoints of the demo suite before executing the tests.

2.2.3. Executing the demo suite

Inside the e-TrustEx project, a separate test suite is created for each service to test the basic flow of that service. This test suite contains a test case that automatically calls the required service endpoints and checks the resulting response.

A description of the steps in a test case is shown when the mouse pointer is pointed at the test case or by opening a test case and clicking the description tab.

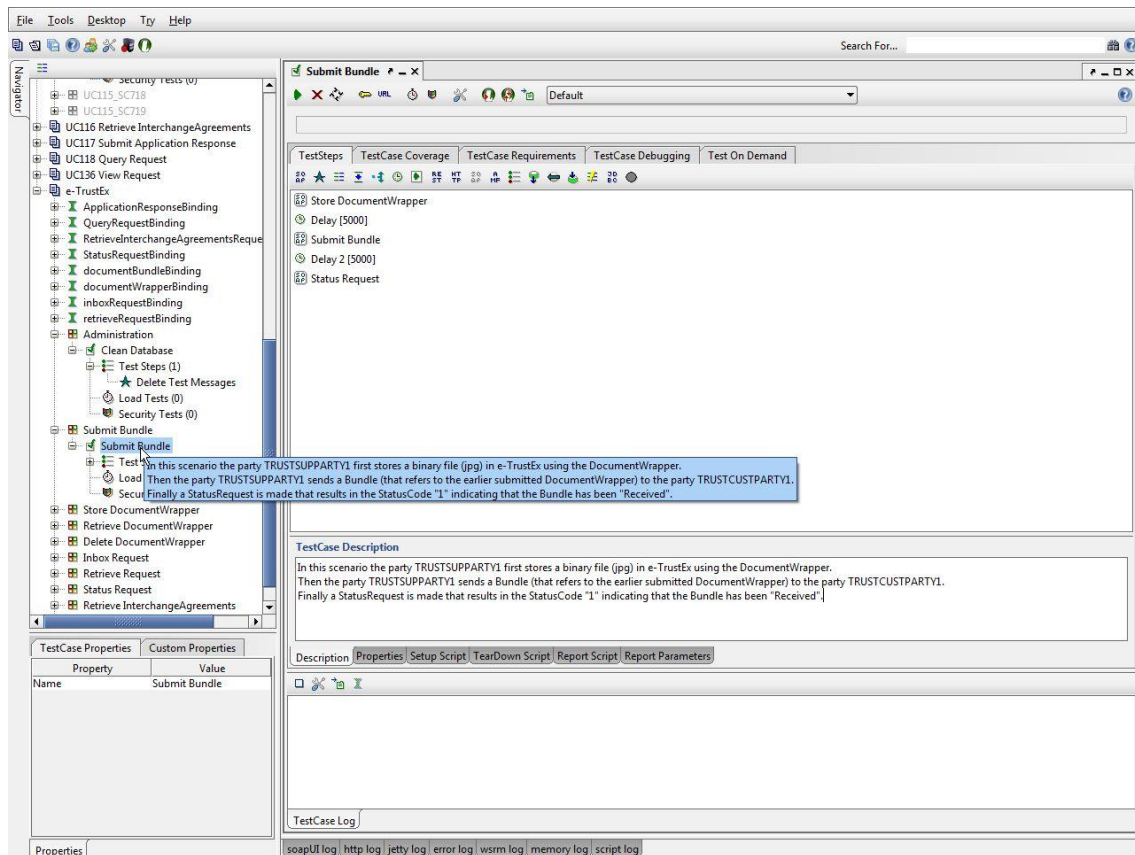


Figure 1 - Test description

e-TrustEx Demo Framework

To run the test case for a specific service, press the green play/send button to execute all test steps and see the results.

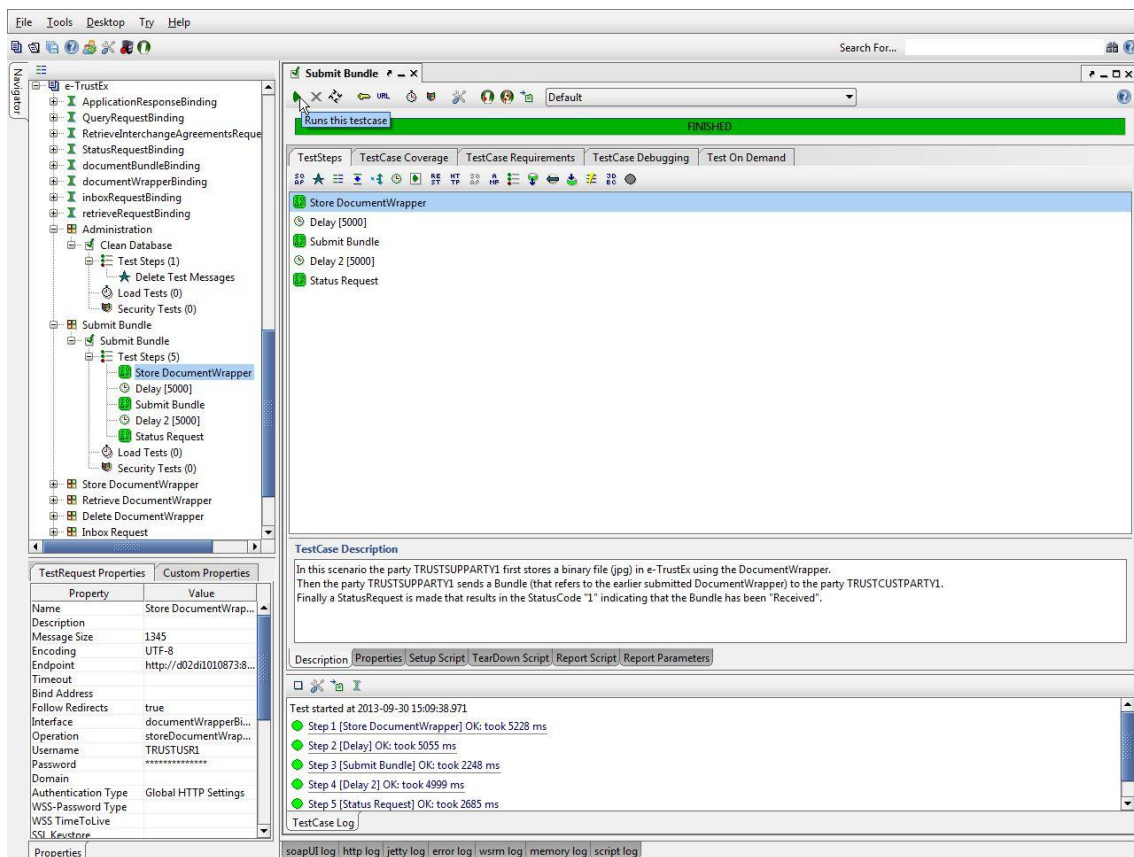


Figure 2 - Running a test case

The details of the requests and responses can be seen by opening a test step.

The request is shown on the left window and the response is shown in the right window.

e-TrustEx Demo Framework

The screenshot displays the e-TrustEx Demo Framework interface. On the left, a navigation tree shows a test plan with steps like 'Submit Bundle'. The main area is split into two panes: 'Form' (left) and 'Overview' (right), both showing XML code. The 'Form' pane shows the request XML, and the 'Overview' pane shows the response XML. At the bottom left, a 'TestRequest Properties' table is visible, and at the bottom right, there are tabs for 'Assertions (4)' and 'Request Log (0)'. The status bar at the very bottom shows various log files like 'soapUI log', 'http log', etc.

Property	Value
Name	Submit Bundle
Description	
Message Size	1466
Encoding	UTF-8
Endpoint	http://d02d10108738...
Timeout	
Bind Address	
Follow Redirects	true
Interface	documentBundleBin...
Operation	submitDocumentBun...
Username	TRUSTUSR1
Password	*****
Domain	
Authentication Type	Global HTTP Settings
WSS-Password Type	
WSS TimeToLive	
SSL Keystore	

Figure 3 - Test request and response

Each test request contains several assertions that perform specific checks on the response of web-service request. To see the details, click the Assertions tab in the bottom of the screen.

e-TrustEx Demo Framework

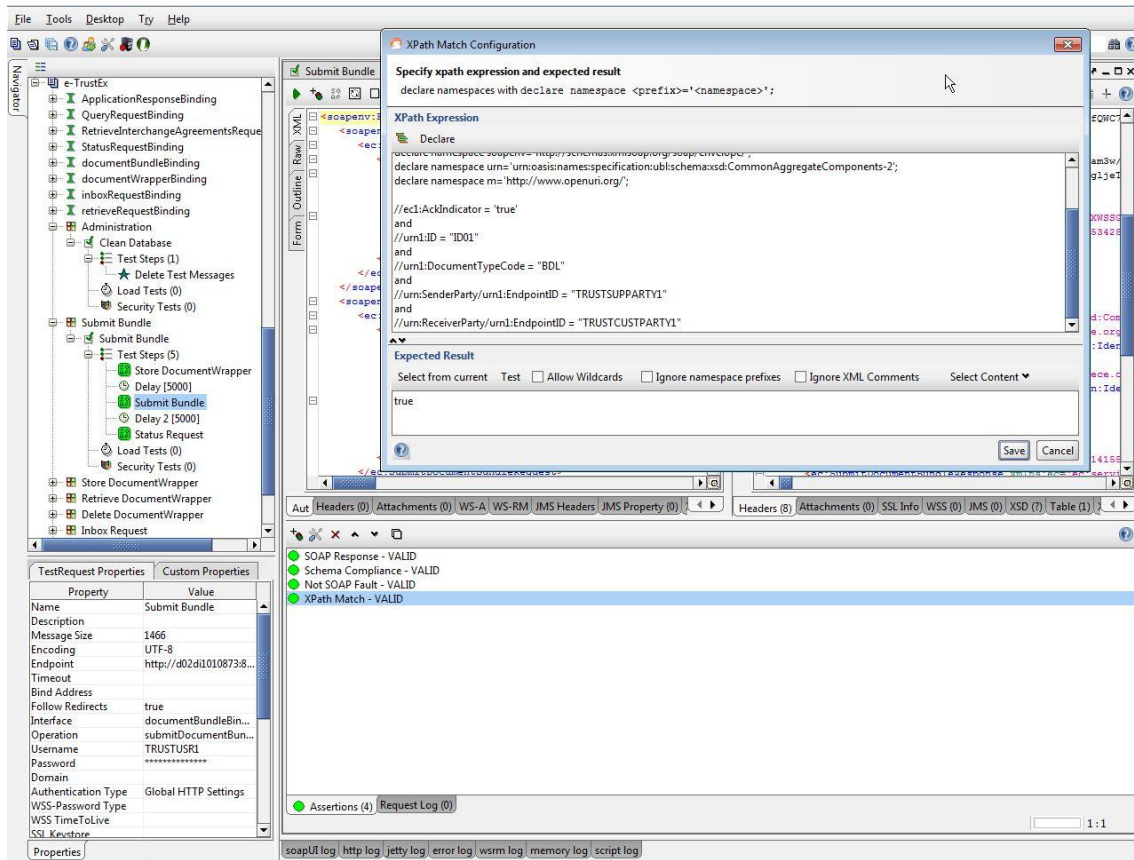


Figure 4 - Test assertions

Each test case can be run independently from the other test cases. However, before running a specific test case for the second time, the "Clean Database" script in the "Administration" test suite should be executed. If this action is not done, then some test steps will fail since the system does not allow the same combination of ID and document type to be sent twice by the same user.