



JOINING UP GOVERNMENTS



A Reusable INSPIRE Reference Platform and INSPIRE Assets

Robin S. Smith and Andrea Perego
(EC Joint Research Centre)

- Cross-sector reuse of INSPIRE assets
- Ideas to make reuse easier with

ARe³NA



- The **INSPIRE Directive** (2007/02/EC) aims to create a **spatial data infrastructure** that will **facilitate spatial data access across borders** in harmonised way
- Detailed technical provisions are being laid down in daughter legislation on
 - **Metadata**
 - **Harmonisation of spatial data sets and services**
 - **Services for discovery, view, download etc.**
 - **Data and Service sharing (policy)**
- DG ENV, EEA and JRC (technical coordinator)



- European Register for railway infrastructure (RINF)
- Location Core Vocabulary pilot



INSPIRE Assets

INSPIRE	Reference: INSPIRE DataSpecification_AD v3.0.1.pdf
TWG-AD	INSPIRE Data Specification on Addresses 2010-04-26 Page 16

5.2.1.2 UML Overview

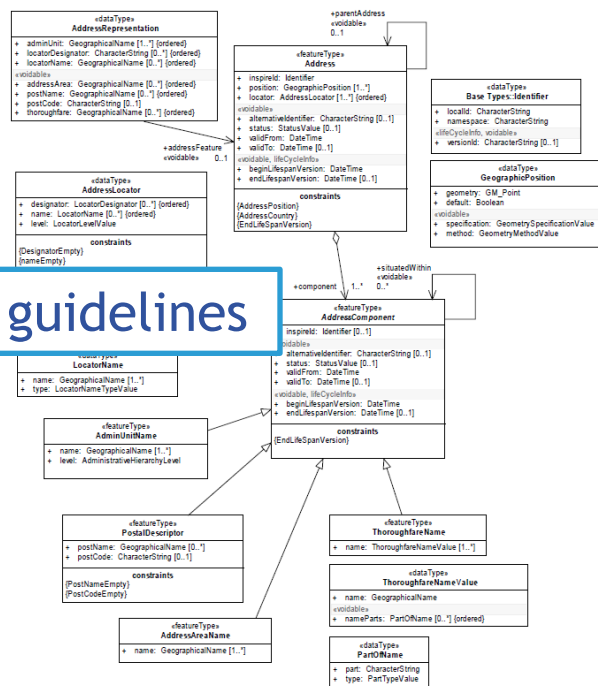


Figure 1 – UML class diagram: Overview of the Addresses application schema

INSPIRE	Reference: INSPIRE DataSpecification_AD v3.0.1.pdf
TWG-AD	INSPIRE Data Specification on Addresses 2010-04-26 Page 41

5.2.2.3 Enumerations and code lists

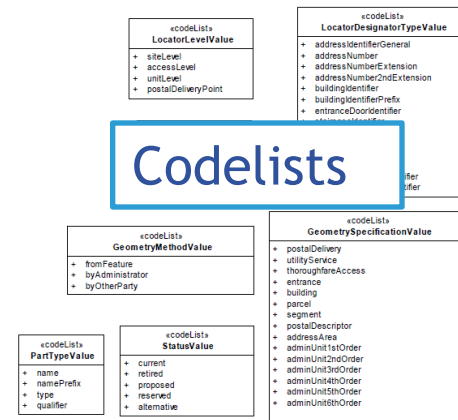


Figure 5 – UML class diagram: Code lists

INSPIRE Infrastructure for Spatial Information in Europe

D2.8.1.5 INSPIRE Data Specification on Addresses – Guidelines

Title D2.8.1.5 INSPIRE Data Specification on Addresses – Guidelines
Creator INSPIRE Thematic Working Group Addresses
Date 2010-04-26



Technical guidelines

Technical Guidance for the implementation of INSPIRE Download Services

Title	Technical Guidance for the implementation of INSPIRE Download Services
Creator	Initial Operating Capability Task Force for Network Services
Date	12-06-2012
Subject	INSPIRE Download Services
Status	Published, Version 3.0
Publisher	Initial Operating Capability Task Force
Type	Text
Description	This document defines technical guidance for INSPIRE Download Services
Format	PDF
Source	Draft Technical Guidance Download Services (version 2.0)
Rights	Public
Identifier	Technical_Guidance_Download_Services_v3.0
Language	EN
Relation	COMMISSION REGULATION (EU) No 1089/2010 of 23 November 2010 amending Regulation (EC) No 975/2009 as regards download services and transformation services
Coverage	Project duration



Recent ARE3NA activities

- ARE3NA inventories (policies, technologies...) as platform content
- Development of the ARE3NA platform in JoinUp
- Examples of missing components:
 - Registry of multilingual semantic assets for INSPIRE and possible cross-sector re-use
 - Access control for public sector data and services
 - INSPIRE RDF vocabularies and Linked Data

joinup





Two ideas to make reuse easier?

- Reusing cross-sector assets through an **e-Learning** approach
 - ‘slide-sharing’, ‘collections’, mapping relationships/ scenarios and sharing them to aid INSPIRE implementation
 - ... (lifelong) e-learning for semantic interoperability
- **Tagging** assets relevant to:
 - Domains
 - Key legal acts/ Policy (development/areas)
 - Initiatives/Projects
 - ...



Thank you

robin.smith@ext.jrc.ec.europa.eu
andrea.perego@jrc.ec.europa.eu



Annex I

1. Coordinate reference systems
2. Geographical grid systems
3. Geographical names
4. Administrative units
5. Addresses
6. Cadastral parcels
7. Transport networks
8. Hydrography
9. Protected sites

Annex II

1. Elevation
2. Land cover
3. Ortho-imagery
4. Geology



Annex III

1. Statistical units
2. Buildings
3. Soil
4. Land use
5. Human health and safety
6. Utility and governmental services
7. Environmental monitoring facilities
8. Production and industrial facilities
9. Agricultural and aquaculture facilities
10. Population distribution – demography
11. Area management/ restriction/regulation zones & reporting units
12. Natural risk zones
13. Atmospheric conditions
14. Meteorological geographical features
15. Oceanographic geographical features
16. Sea regions
17. Bio-geographical regions
18. Habitats and biotopes
19. Species distribution
20. Energy Resources
21. Mineral resources