

SIMAPS v1.4.0

Semantic Interoperability Maturity Assessment of a Public Service

User guide



Disclaimer

The information and views set out in this publication are those of the author(s) and do not necessarily reflect the official opinion of the Commission. The Commission does not guarantee the accuracy of the data included in this document. Neither the Commission nor any person acting on the Commission's behalf may be held responsible for the use, which may be made of the information contained therein.

© European Union, 2024

TABLE OF CONTENTS

| | |
|--|-----------|
| EXECUTIVE SUMMARY | 5 |
| 1 INTRODUCTION | 6 |
| 1.1 DOCUMENT OBJECTIVES | 6 |
| 1.2 DOCUMENT STRUCTURE | 6 |
| 2 SIMAPS KEY CONCEPTS | 7 |
| 2.1 DIGITAL PUBLIC SERVICE | 7 |
| 2.2 INTEROPERABILITY AND IMAPS | 8 |
| 2.3 SEMANTIC INTEROPERABILITY AND SIMAPS | 9 |
| 2.4 IMAPS AND SIMAPS USER JOURNEY | 10 |
| 2.5 SIMAPS TARGET USERS | 10 |
| 3 SIMAPS MATURITY LEVELS | 11 |
| 4 SIMAPS STRUCTURE | 12 |
| 4.1 APPROACH | 12 |
| 4.2 SIMAPS COMPONENTS | 12 |
| 4.2.1 <i>Service Delivery (D)</i> | 13 |
| 4.2.2 <i>Service Consumption (C)</i> | 13 |
| 4.3 SIMAPS ATTRIBUTES | 13 |
| 4.4 SOURCES OF INPUT | 14 |
| 5 SIMAPS QUESTIONNAIRE | 17 |
| 5.1 QUESTIONNAIRE STRUCTURE | 17 |
| 5.2 SIMAPS QUESTIONNAIRE | 22 |
| 5.2.1 <i>Service Identification (A) - Questions</i> | 22 |
| 5.2.2 <i>Service Delivery (D) - Questions</i> | 28 |
| 5.2.3 <i>Service Consumption (C) - Questions</i> | 35 |
| 6 SIMAPS RECOMMENDATIONS | 41 |
| 6.1 PRINCIPLES | 41 |
| 6.2 RECOMMENDATIONS' OVERVIEW | 41 |
| 6.3 RECOMMENDATIONS | 42 |
| 6.3.1 <i>Service Delivery (D) – Scoring table</i> | 42 |
| 6.3.2 <i>Service Delivery (D) – Recommendations</i> | 45 |
| 6.3.3 <i>Service Consumption (C) – Scoring table</i> | 51 |
| 6.3.4 <i>Service Consumption (C) – Recommendations</i> | 53 |

TABLE OF FIGURES

| | |
|--|-----------|
| Figure 1: Interoperability dimensions | 8 |
| Figure 2: IMAPS to SIMAPS user journey | 10 |
| Figure 3: SIMAPS behavioural interoperability viewpoint | 12 |
| Figure 4: SIMAPS questionnaire Section A | 17 |
| Figure 5: SIMAPS questionnaire Section A | 18 |
| Figure 6: SIMAPS questionnaire Section A | 18 |
| Figure 7: SIMAPS questionnaire Section A | 19 |
| Figure 8: SIMAPS questionnaire Section D | 20 |
| Figure 9: SIMAPS questionnaire Section D | 20 |
| Figure 10: SIMAPS questionnaire Section C | 21 |
| Figure 11: SIMAPS questionnaire Section C | 22 |

Table of Abbreviations

| Acronym | Description |
|--------------|---|
| ABB | Architectural Building Block |
| CAMSS | Common Assessment Method for Standards and Specifications |
| CarTool | Cartography Tool |
| DIGIT | Directorate-General for Informatics |
| EC | European Commission |
| EIF | European Interoperability Framework |
| EIRA© (EIRA) | European Interoperability Reference Architecture |
| ELAP | EIRA Library of Architecture Principles (ELAP) |
| ELIS | EIRA Library of Interoperability Specifications |
| EU | European Union |
| HL SAT | High Level Solution Architecture Template |
| IMAPS | Interoperability Maturity Assessment of a Public Service |
| IQAT | Interoperability Quick Assessment Toolkit |
| ISA | Interoperability Services for Public Administrations |
| MS | Member State |
| PA | Public Administration |
| SIMAPS | Semantic Interoperability Maturity Assessment of a Public Service |
| SIQAT | Structural Interoperability Quick Assessment Toolkit |

Glossary of terms

| Term | Description |
|------------------|---|
| Attribute | Structural part of each SIMAPS component. Each attribute includes questions (items) that assess a specific aspect of the digital public service. Each of the SIMAPS survey components has questions (items) that are organised under the following attributes: the semantic interoperability specifications of data, information and knowledge delivered by the digital public service to its end users and/or other services, the semantic interoperability enablers and the semantic interoperability manifestations. |
| Component | Fundamental structural part of the SIMAPS model that reflects how the respective questions (items) in the questionnaire (survey) are organised. Each component refers to a different pillar of the digital public service lifecycle. SIMAPS has two components: Service Delivery and Service Consumption, which means that the respective questions refer to these two specific categories. |
| Item | Structural part of each SIMAPS attribute. Items are the questions of the SIMAPS questionnaire (survey) |
| Option | Options are the possible replies to one SIMAPS item |
| Principles | Rules applied on digital public service to enable and ensure semantic interoperability |
| (Overall) Weight | Weight refers to the absolute numerical factor that each component/attribute/item contributes into the structural part it belongs. Overall weight refers to the overall numerical factor that each component/attribute/item contributes to the whole SIMAPS survey |

EXECUTIVE SUMMARY

This document provides the guidelines and definitions for using the **Semantic Interoperability Maturity Assessment of a Public Service (SIMAPS)** tool in order to assess and improve the semantic behavioural interoperability maturity of a digital public service. It also includes the questions and the options of the SIMAPS questionnaire as well as the respective recommendations. SIMAPS is the **semantic specialisation** of IMAPS survey that assesses the behavioural aspects of a digital public service from the semantic interoperability viewpoint.

In the following chapters, we provide an introduction to the most important chapters in the context of SIMAPS and we present the objectives of SIMAPS, the defined maturity levels and the approach and attributes of semantic interoperability that are the subject of observation and assessment.

In addition, we provide an explanation of the structure of the SIMAPS questionnaire, the methodology used to determine the maturity levels of semantic behavioural interoperability of a digital public service and the questions and options of the questionnaire.

Finally, we conclude with the recommendations that the end-user receives for each question. After filling in the online questionnaire, the respondent receives a PDF with advice on how to improve the semantic behavioural interoperability of his digital public service.

1 INTRODUCTION

1.1 Document Objectives

The main objective of the **Semantic Interoperability Maturity Assessment of a Public Services (SIMAPS)** is to provide insight into how digital public services can improve their semantic behavioural interoperability maturity. SIMAPS is the **semantic specialisation** of IMAPS survey that assesses the behavioural aspects of a digital public service from the semantic interoperability viewpoint. This document is based on the updates of SIMAPS v1.3.0 to version 1.4.0 by implementing the feedback collected during SIMAPS v1.3.0 deployment and review, as this has been recorded in the respective JIRA tickets as well as suggestions received by the experts. These updates include the description of SIMAPS version 1.4.0, its purpose and scope in relation to IMAPS, as well as its design and deployment on the EU Survey portal. The objectives of the present deliverable are the following:

- the description of the **key concepts** to understand the SIMAPS;
- the presentation of **model objectives**;
- the description of the SIMAPS **maturity levels**, as well as the **behavioural interoperability aspects** that it covers;
- the description of the SIMAPS **structure** including its **attributes and components**;
- the description of how the SIMAPS **questionnaire** is structured, its questions and their options;
- the description of how the SIMAPS recommendations are generated including the recommendations per question.

1.2 Document Structure

The document is organised in the following chapters:

- **Executive summary**, which provides an overview of the deliverable objectives, activities and conclusions;
- **Chapter 1:** Serves as introduction to the document;
- **Chapter 2:** Includes the description of the key concepts used in SIMAPS and their link to IMAPS;
- **Chapter 3:** Includes the maturity levels of SIMAPS;
- **Chapter 4:** Presents SIMAPS structure, in components, attributes and items, demonstrating how their design ensures alignment with IMAPS, EIF and EIRA;
- **Chapter 5:** Presents the SIMAPS questionnaire and how it is structured;
- **Chapter 6:** Presents the SIMAPS recommendations and how they are generated

2 SIMAPS KEY CONCEPTS

The following concepts are key to understand the SIMAPS:

- *Digital public service* – the digital delivery of a public service via channels such as interactive digital collaborations (chat, messaging functionality), mobile application, web portal / website, email and machine-to-machine interface.
- *Interoperability* – the ability of disparate and diverse organisations to interact towards mutually beneficial and agreed common goals, involving the sharing of information and knowledge between the organisations, through the business processes they support, by means of the exchange of data between their respective IT systems.
- *Semantic Interoperability* - Semantic interoperability enables organisations to process information from external sources in a meaningful manner and ensures that the precise meaning of exchanged information is understood and preserved throughout exchanges between different parties. In the context of the European Interoperability Framework (EIF), semantic interoperability also encompasses the syntactic interoperability in the sense of describing the exact format of the information to be exchanged in terms of grammar, format and schemas.

2.1 Digital public service

The Semantic Interoperability Maturity Assessment of Public Services (SIMAPS) assesses the semantic behavioural interoperability of a digital public service. The following four design rules apply when defining a digital public service:

1. The digital public service has a **single outcome / public decision**. When multiple service outcomes are recognised, then multiple digital public services will need to be defined and assessed, each one through a separate SIMAPS assessment;
2. The digital public service has a **single service owner** i.e. the public administration responsible for the service. When the ownership of a service is distributed amongst multiple public administrations (e.g. multiple local administrations providing birth certificates), then each service owner needs to conduct a separate assessment for his respective service;
3. The digital public service has a **single primary end user group**. Public services can be delivered towards three of end users: citizens, businesses and other public administrations. In case the same digital public service is delivered to different types of end users, then these services should be assessed separately from one another through the SIMAPS;
4. The digital public service has a **virtual end user interface**. SIMAPS at the outset has been designed to evaluate services, which are delivered to end users. This is a corollary to the previous design rule.

Examples of digital public services that conform to the aforementioned design rules are the following:

- Citizens (3) are offered the service to issue an e-administrative fee (1) via the GSIS portal (4) provided by the Ministry of Digital Government (2);

- The national electronic public procurement platform (4) delivers semantically aligned electronic notices (1) to the TED eNotices platform of EU (3).
- Citizens (3) are offered the national electronic service of citizens' identities (eID) (1) via the eID portal (4) provided by the Ministry of Interior (2). The eID portal (4) also delivers semantically aligned data to national business registers (3).

2.2 Interoperability and IMAPS

Interoperability in a digital public service is an attribution defined as "the extent it enables peer-to-peer collaboration with public services towards mutually beneficial goals, involving the sharing of data, information and knowledge between them regardless their legal, organisational, semantic and technical environment". Figure 2 illustrates the digital public service in the context of interoperability.

Interoperability is of multidimensional nature involving structural interoperability, behavioural interoperability and governance interoperability:

1. The **structural interoperability** is "the extent its structure has been developed reusing and/or sharing components in support of a peer-to-peer collaboration"
2. The **behavioural interoperability** is "the extent its manifested behavior exchanges data, information or knowledge with its environment in support of a peer-to-peer collaboration"
3. The **governance interoperability** is "the extent its agreed choreography rules support a peer-to-peer collaboration"

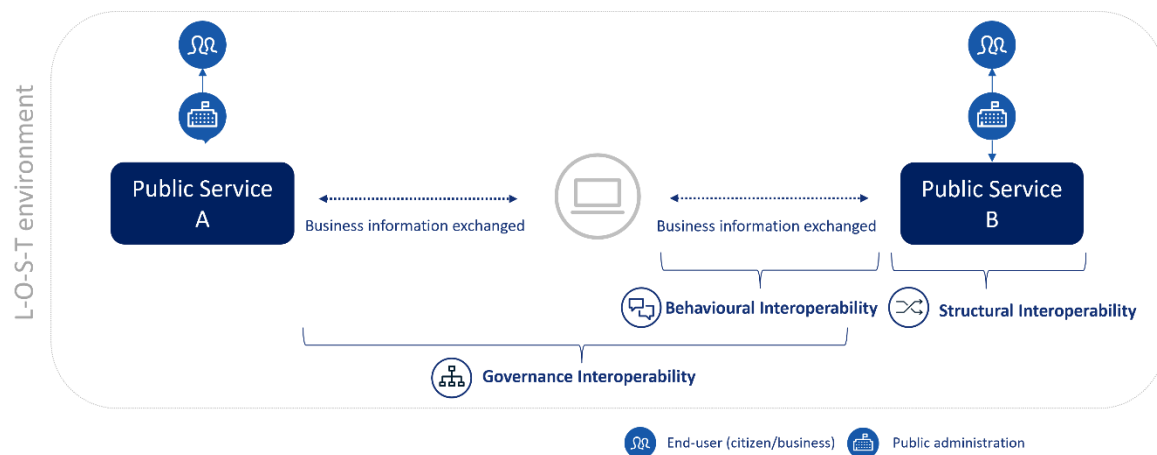


Figure 1: Interoperability dimensions

In addition, all relationships that interconnect the digital public service with the outside environment are considered relevant for assessing interoperability and thus, they are taken into account in the IMAPS. Interoperability and IMAPS are concerned with how the relationship between internal and external domains is defined and implemented.

In particular, IMAPS measures how well a public administration interacts with **external** entities to organise the efficient provisioning of its public services to other public administrations, businesses and citizens. IMAPS uses the term "behavioural" to refer to the fact that it assesses aspects that have

to do with how the public services “behave” while interacting with each other or with their end users (citizens, business or other Public Administrations).

2.3 Semantic Interoperability and SIMAPS

SIMAPS assesses the behavioural aspects of a digital public service, via an approach similar to this of IMAPS, but from the **semantic behavioural interoperability viewpoint**.

Semantic interoperability enables organisations process information from external sources in a meaningful manner and ensures that the precise meaning of exchanged information is understood and preserved throughout exchanges between different parties such as different Public Administrations. In the context of the **European Interoperability Framework** (EIF), semantic interoperability also encompasses the syntactic interoperability in the sense of describing the exact format of the information to be exchanged in terms of grammar, format and schemas. **Semantic interoperability** provides also a common understanding of the data, by using common nomenclatures and data formats. It is crucial to agree on the use of common semantic standards, promote transparent and well-documented metadata policies and increase the visibility and reuse of existing semantic interoperability solutions.

In particular, SIMAPS assesses the behavioural aspects of a digital public service by limiting its focus on:

- the semantic behavioural interoperability **specifications** of data, information and knowledge delivered and consumed by the public service and its end-users or other client services;
- the semantic behavioural interoperability **capabilities** that **enable** either the delivery and consumption of data, information and knowledge by the digital public service and its end users or other client services or ii) the discoverability of the public service or other client services;
- the semantic behavioural interoperability **manifestations** of the public service delivering and consuming data, information and knowledge (manifestations can be performance, results, user experience).

SIMAPS Objectives

SIMAPS delivers insights into two important aspects of semantic interoperability maturity:

- Provide insight into the **current semantic interoperability maturity** of a digital public service based on a set of defined interoperability attributes and maturity stages;
- Provide guidelines for how the digital public service can **improve its semantic interoperability maturity**.

Improving interoperability and in particular, semantic interoperability is a continuous activity. Organisations are therefore encouraged to use the model and its improvement recommendations regularly.

2.4 IMAPS and SIMAPS User Journey

The figure below illustrates a **typical user journey** for the IMAPS end user and shows how IMAPS recommendations can trigger the need for an assessment with SIMAPS survey.



Figure 2: IMAPS to SIMAPS user journey

It is briefly mentioned that although SIMAPS can serve as a stand-alone survey that can provide an assessment of a digital public service from a semantic behavioural interoperability point of view, the recommended use case is to first perform an assessment with IMAPS, and following its recommendations, then to perform an assessment with SIMAPS.

2.5 SIMAPS Target users

SIMAPS can be used by the following end-users:

- Data experts: to provide information on existing and reusable data sets, data models and core vocabularies on their use;
- Public service owners: to improve the overall semantic interoperability and conformance of their digital public services;
- Business Architects: to help analyse and document the processes and data flows for the smooth data exchange among services.

3 SIMAPS MATURITY LEVELS

SIMAPS uses a **five-stage model** to indicate the semantic interoperability maturity of the digital public service. Using maturity levels allows to:

- Measure the semantic interoperability maturity of the digital public service as a whole as well as underlying aspects;
- Indicate which capabilities and next steps are required to reach higher levels, and thus improve semantic interoperability maturity.

A five-stage approach is often seen in proven maturity models and is considered best practice for assessing and improving maturity. The five maturity levels for SIMAPS are summarised in the table below.

Table 1: Five maturity levels of SIMAPS

| | | |
|-------------|---------------|--|
| LEVEL 01 | AD HOC | Poor Interoperability – the digital public service cannot be considered interoperable |
| LEVEL 02 | OPPORTUNISTIC | Fair Interoperability – the digital public service implements some elements of interoperability best practices |
| LEVEL 03 | ESSENTIAL | Essential Interoperability – the digital public service implements the essential best practices for interoperability |
| LEVEL 04 | SUSTAINABLE | Good Interoperability – all relevant interoperability best practices are implemented by the digital public service |
| LEVEL 05 | SEAMLESS | Interoperability Leading Practice – the digital public service is a leading interoperability practice example for others |

The desired interoperability level for a digital public service is at least level 4: “Sustainable”. At this level, the digital public service is considered to have implemented all relevant best practices.

4 SIMAPS STRUCTURE

4.1 Approach

IMAPS uses the term “behavioural” to refer to the fact that it assesses aspects that have to do with how the public services “behave” while interacting with each other or with their end users (citizens, business or other Public Administrations). **SIMAPS** assesses the behavioural aspects of a digital public service, via an approach similar to this of IMAPS, but from the **semantic behavioural interoperability viewpoint**.

SIMAPS conceptual model describes all possible instances where **interoperability with the outside world may occur from the digital public service viewpoint**. It distinguishes between the **internal domain** (the internal service management) and the **external domain** (the digital public service uses/consumes existing services and exposes the produced service to thirds).

4.2 SIMAPS Components

| | |
|-----------|---|
| Component | Fundamental structural part of the SIMAPS model that reflects how the respective questions (items) in the questionnaire (survey) are organised. Each component refers to a different pillar of the digital public service lifecycle. SIMAPS has two components: Service Delivery and Service Consumption, which means that the respective questions refer to these two specific categories. |
|-----------|---|

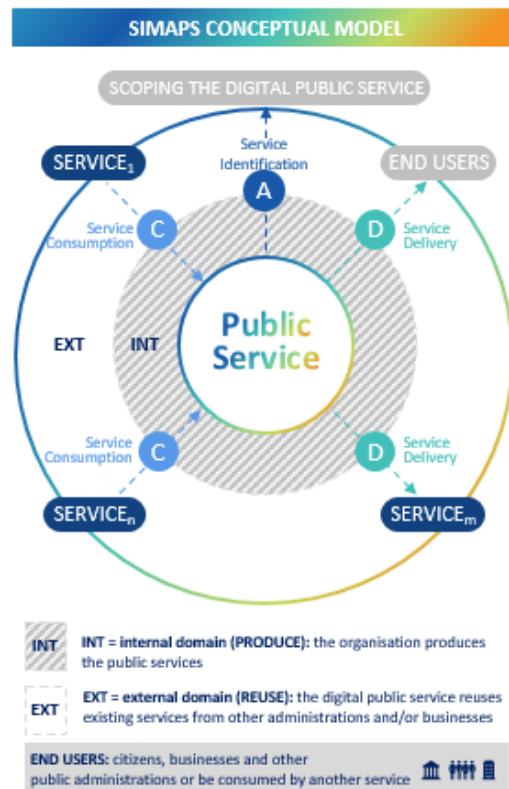


Figure 3: SIMAPS behavioural interoperability viewpoint

The behavioural interoperability aspects are described below:

- **Service Consumption (C)** – Consumption of reusable machine-to-machine services from other public administrations and businesses. This can include the consumption of functionalities, base registry information and security services;
- **Service Delivery (D)** – Delivery of the digital public service to its end users and/or other public administrations

The aspects (hereafter referred to as Behavioural Interoperability Aspects) indicated in the figure above, are the object of measurement in SIMAPS, specifying where semantic behavioural interoperability plays a role from a service delivery and a service consumption viewpoint.

4.2.1 Service Delivery (D)

The public administration delivers the digital public service towards end users i.e. citizens, businesses or other administrations. We call this **Service Delivery**. The service that is being delivered represents the focal point of the SIMAPS in terms of correctly scoping and delimiting the digital public service under evaluation. If service delivery is scoped correctly, the scoping of the other areas becomes more straightforward. The Service Delivery area focuses on the delivery of the digital public service to its end users or other services.

4.2.2 Service Consumption (C)

For delivering the digital public service towards the end user, the digital public service may be required to consume services of other public administrations or businesses. This area is called **Service Consumption** and it focuses on the consumption of reusable machine-to-machine (client) services from other public administrations and businesses. This can, indicatively, include the consumption of functionalities, base registry information and security services.

Digital public services that consume (reuse) existing services where possible are considered more interoperable than organisations that produce (develop) their own proprietary services without reusing existing functionalities.

4.3 SIMAPS Attributes

| | |
|-----------|---|
| Attribute | Structural part of each SIMAPS component. Each attribute includes questions (items) that assess a specific aspect of the digital public service. Each of the SIMAPS survey components has questions (items) that are organised under the following attributes: the semantic interoperability specifications of data, information and knowledge delivered by the digital public service to its end users and/or other services, the semantic interoperability enablers and the semantic interoperability manifestations. |
|-----------|---|

It is reminded, as per the glossary in the introduction of this document, that SIMAPS questionnaire is structured into two components: Service Delivery and Service consumption. The attributes that compose these SIMAPS components, are presented in the table below.

Table 2: Service delivery and service consumption attributes

| Service Delivery | |
|---|--|
| Attribute | Rationale |
| Data, Information, Knowledge Delivered | Assesses the semantic behavioural interoperability specifications of data, information and knowledge delivered by the public service to its end users and/or other client services. |
| Service Delivery Enablers | Assesses the semantic behavioural interoperability capabilities that enable either i) the delivery of data, information and knowledge by the digital public service to its end users and/or other client services or ii) the discoverability of the public service. |
| Service Delivery Manifestations | Assesses the semantic behavioural interoperability manifestations of the public service delivering data, information and knowledge (manifestations can be performance, results, user experience). |
| Service Consumption | |
| Attribute | Rationale |
| Data, Information, Knowledge Consumed | Assesses the semantic behavioural interoperability specifications of data, information and knowledge consumed by the public service from other server services |
| Service Consumption Enablers | Assesses the semantic behavioural interoperability capabilities that enable the public service to either i) discover other server services and/or ii) consume their data, information and knowledge |
| Service Consumption Manifestations | Assesses the semantic behavioural interoperability manifestations of the public service consuming data, information and knowledge (manifestations can be performance, results, user experience). |

It is briefly noted that there is a symmetry in the way the Service Delivery and Service Consumption attributes have been defined, from the delivery viewpoint to the consumption viewpoint. This means that there is no attribute in Service Delivery that is not also examined in the Service Consumption component from the service consumption viewpoint and vice versa.

4.4 Sources of Input

Various related programmes and initiatives inside and outside Interoperable Europe have been leveraged to build the current set of SIMAPS Attributes. The most important ones are:

- **European Interoperability Framework (EIF)**¹ – The European Interoperability Framework (EIF) serves as an important framework for organisations to promote and improve interoperability and therefore is considered as a paramount starting point for defining SIMAPS attributes. The respective items per attribute have been specifically formed to assess the level of conformance with the elements of EIF structure (principles/layers/conceptual model). The basis to define SIMAPS items have been the EIF recommendations;

¹ <https://web.archive.org/web/20220301180315/https://ec.europa.eu/isa2/eif>

- **European Interoperability Reference Architecture (EIRA)**² – EIRA compliance is ensured at the level of SIMAPS attributes. In this context, the respective items per attribute have been specifically formed to assess the level of conformance with the EIRA Architecture Building Blocks (ABBs). The basis to define SIMAPS items has been the context of each one of the EIRA ABBs.
- **Digital Single Market** - the Digital Single Market strategy aims to open up digital opportunities for people and business and enhance Europe's position as a world leader in the digital economy. Select attributes were defined to align with this ambition; the terminology of SIMAPS overall embraces the key concepts of “digitalisation” in its various aspects;
- **Structural Interoperability Quick Assessment Toolkit (SIQAT®)**³ – SIQAT® has been developed in the context of Action 2016.36 Assessment of trans-European systems supporting EU policies of the Interoperability solutions and common frameworks for European public administrations, businesses and citizens. The objective of the SIQAT® is to allow public service owners to evaluate the structural interoperability maturity level of their digital public service.
- **Semantic interoperability experts** – The IMAPS project team conducted some rounds of interviews with identified experts from the semantic interoperability domain to improve the SIMAPS questionnaire.
- **A multi-dimensional framework to evaluate the innovation potential of digital public services**⁴ – This report presents the main findings of a study conducted as part of the “Innovative Public Services” (IPS) Action of the Interoperable Europe Programme. The main outcome of the research is an original multi-dimensional framework for evaluating the interoperability readiness of digital public services. The framework was conceptualised and tested in the context of desk and field research on available evidence to support European Public Administrations willing to embrace new digital technologies and deliver innovative public services according to the four layers of the European Interoperability Framework (EIF) and in alignment with the user centricity principles defined in the Tallinn Declaration (2017).
- **Common Assessment Method for Standards and Specifications (CAMSS)**⁵ - CAMSS is the European guide for assessing and selecting standards and specifications for an eGovernment project, a reference when building an architecture and an enabler for justifying the choice of standards and specifications in terms of interoperability needs and requirements. It is fully aligned with the European Standardisation Regulation 1025/2012.
- **EIRA Library of Interoperability Specifications (ELIS)**⁶ - The EIRA Library of Interoperability Specifications is a library containing the standards and specifications defining the interoperability requirements of the architectural building blocks (ABBs) contained in the European Interoperability Reference Architecture (EIRA). The aim of this library is supporting solutions architects when modelling using EIRA.

² <https://joinup.ec.europa.eu/collection/european-interoperability-reference-architecture-eira/solution/eira>

³ <https://joinup.ec.europa.eu/collection/interoperability-maturity-tools-imts-digital-public-services/solution/siqat>

⁴ <https://publications.jrc.ec.europa.eu/repository/handle/JRC121672>

⁵ <https://joinup.ec.europa.eu/collection/common-assessment-method-standards-and-specifications-camss/about>

⁶ <https://joinup.ec.europa.eu/collection/common-assessment-method-standards-and-specifications-camss/solution/elis/release/600>

- ***EIRA Library of Architecture Principles (ELAP)***⁷ - The EIRA library of architecture principles (ELAP) is intended to direct government organizations in initiating changes and implementing IT projects. Particularly when designing new or modified services, it is necessary to make visible how the principles are implemented and which considerations are made in this regard. The apply-or-explain principle applies here, whereby deviations are permitted provided that they are substantiated and recorded with good arguments so that they can be revisited at a later stage. This prevents important matters from being overlooked. The principles are described in relation to relevant policy frameworks, established standards, building blocks and examples that are already available, so that they are as recognisable as possible in practice. In the context of SIMAPS, the CAMSS terminology, ELIS requirements and ELAP principles have been used as basis and guidance to design the items and options of the questionnaire, as well as the respective interoperability aspects, linked to each item. These interoperability aspects will serve as the basis to design the High Level Solution Architecture Template (HL SAT) of SIMAPS, a specification that extends EIRA and provides high level requirements on how to design a semantically interoperable digital public service.

⁷ <https://joinup.ec.europa.eu/collection/common-assessment-method-standards-and-specifications-camss/solution/elap/release/200>

5 SIMAPS QUESTIONNAIRE

SIMAPS uses a questionnaire structure for assessing the semantic behavioural interoperability maturity of a digital public service. This section details the questionnaire type, question types and assessment structure in more detail.

SIMAPS questionnaire is a compact and highly user-friendly tool available online. Designed as a self-assessment tool, SIMAPS assessment criteria have been condensed into targeted question sets in order to evaluate key semantic behavioural interoperability aspects of a digital public service. Such insight results in personalised, confidential feedback and recommendations on how a service can improve.

SIMAPS Questionnaire is designed to take approximately 20 - 30 minutes to complete. Once the questionnaire is completed, a report is generated with the semantic behavioural interoperability scores plus recommendations on how to further improve the digital public service's semantic behavioural interoperability.

5.1 Questionnaire Structure

This section outlines the structure of the questionnaire. The four main sections of the questionnaire are in line with the earlier presented overview of behavioural interoperability aspects ([section 4.2](#)):

- **Service Identifications (A):** This section assesses the scope of the digital public service (the object of measurement, i.e. the digital public service to examine), service landscaping, the digital public service's outcome, the service owner, the administrative level, etc.;
- **Service Delivery (D):** The section assesses how the digital public service delivers its service;
- **Service Consumption (C):** This section assesses if and how services are consumed from other administrations and businesses.

The following figures illustrate the sections A, D and C of SIMAPS questionnaire as described above.

A1A. Please provide your name:

A1B. Please provide your email address:

A1C. Please provide your phone number:

* A1D. Please indicate the country of the organisation providing the service

A1E. Please provide your role in the organisation providing the service:

Figure 4: SIMAPS questionnaire Section A


SIMAPS version 1.4.0 user guide

* A2A. A digital public service is a digital service rendered in the public interest.

What is the name of the digital public service that you provide to the end users (citizens, businesses or other public administrations)?

A2B. Please provide the public service catalogue name and URI, if it is applicable for the digital public service.

* A2C. Please give a brief description of the service.

More Info 

A2D. Appearance: How does the service deliver the outcome towards the end user group?

- ☐ The public service delivers the outcome towards the end users **via traditional** channels e.g. phone, postal service
- ☐ The public service delivers the outcome towards the end users **via digital** channels, e.g. through a web portal/website or an application
- ☐ The service delivers the outcome towards **other IT systems** (machine-to-machine interface)

* A2E. Please specify the official email address of the contact point for the provided service:

Figure 5: SIMAPS questionnaire Section A

↑ A3A. Service provider: Which public administration tier is primarily responsible for providing the service?

- ☐ International Public Administration
- ☐ Central Public Administration
- ☐ Regional Public Administration
- ☐ Local Public Administration
- ☐ Other Legal Entity



↑ In case of "Other Legal Entity", please indicate in the text field below.

↑ A3B. Are the solutions provided by a Directorate-General of the European Commission?

- ☐ Yes
- ☐ No



↑ A3C. Please indicate the Directorate-General of the European Commission:

Figure 6: SIMAPS questionnaire Section A

A4. Please indicate in which sector is the service provided.

- ☐ Education
- ☐ Public Health
- ☐ Public Safety
- ☐ Environmental Protection
- ☐ Justice
- ☐ Transportation
- ☐ Infrastructure
- ☐ Social Services
- ☐ Economy/Financial
- ☐ Other



↑ In case of "Other", please indicate in the text field below

A5. What is the end user group to whom the service is delivered?

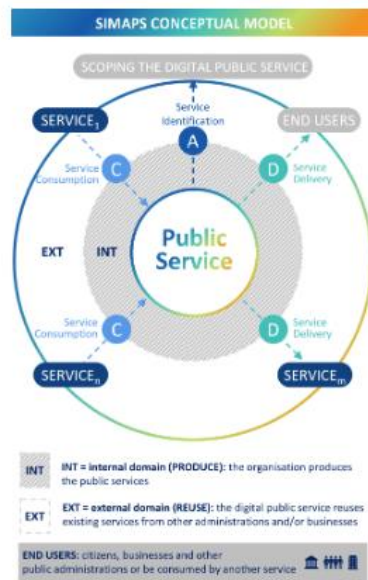
- ☐ Public Administrations (A2A)
- ☐ Citizens (A2C)
- ☐ Businesses (A2B)

A6. At what administrative level is the service provided (multiple answers are possible)?

- ☐ Local (e.g. city, municipality)
- ☐ Regional
- ☐ National
- ☐ European
- ☐ International

Figure 7: SIMAPS questionnaire Section A

Service Consumption (C)



For delivering the digital public service data towards other administrations, businesses and citizens, the digital public service may be required to consume service of other public administrations or businesses. This area is called Service Consumption.

This section comprises the "Data, information and knowledge consumed", the "Service Consumption Enablers" and the "Service Consumption Manifestations".

Please answer the following questions regarding the service consumption of your service, if applicable.

Figure 10: SIMAPS questionnaire Section C

↑ * C1. To what extent does the service consume structured data, information and knowledge from other services or end users?

Enabler / *Manifestation*

More Info ⓘ

- ☐ The service consumes **unstructured** data, information and knowledge (e.g. image files)
- ☐ The service consumes **semi-structured** machine-readable data, information and knowledge from other services, e.g. word and/or PDF files
- ☐ The service consumes **structured** data e.g. **spreadsheets**
- ☐ The service consumes **structured** data from other services, e.g. spreadsheets, according to an open standard
- ☐ The service consumes **Linked Open Data** (LOD)
- ☐ **Not applicable or not necessary** (according to the scope of the digital public service)
- ☐ **No answer**

↑ * C2. To what extent does the service use commonly agreed standards to semantically align the data, information and knowledge consumed? (ontology, data model, data syntax, data format)

Enabler / *Manifestation*

More Info ⓘ

- ☐ The service **does not use** any commonly agreed standards to semantically align the data, information and knowledge consumed
- ☐ The service uses **custom** standards to semantically align **some** of the data, information and knowledge consumed
- ☐ The service uses **formal** standards to semantically align **most** of the data, information and knowledge consumed (e.g. e-Government Core Vocabularies)
- ☐ The service uses **formal** standards to semantically align **any** data, information and knowledge consumed (e.g. e-Government Core Vocabularies, Asset Description Metadata Schema (ADMS) or DCAT Application Profile for Data Portals in Europe (DCAT-AP)), CPSV-AP, etc.)
- ☐ The service **uses ontology classes** to semantically describe any data, information and knowledge consumed
- ☐ **Not applicable or not necessary** (according to the scope of the digital public service)
- ☐ **No answer**

Figure 11: SIMAPS questionnaire Section C

5.2 SIMAPS Questionnaire

5.2.1 Service Identification (A) - Questions

A1A.

| | |
|-----------------------|--|
| <i>Name</i> | Contact details |
| <i>Question type</i> | Free text |
| <i>Rationale</i> | Gather contact information for eventual follow-up. |
| <i>Question</i> | Please provide your name. |
| <i>Question logic</i> | Next question |

A1B.

| | |
|-----------------------|--|
| <i>Name</i> | Contact details |
| <i>Question type</i> | Free text - format check on email |
| <i>Rationale</i> | Gather contact information for eventual follow-up. |
| <i>Question</i> | Please provide your email address. |
| <i>Question logic</i> | Next question |

A1C.

| | |
|-----------------------|--|
| <i>Name</i> | Contact details |
| <i>Question type</i> | Free text - format check on phone number |
| <i>Rationale</i> | Gather contact information for eventual follow-up. |
| <i>Question</i> | Please provide your phone number. |
| <i>Question logic</i> | Next question |

A1D.

| | |
|-----------------------|---|
| <i>Name</i> | Contact details |
| <i>Question type</i> | Multiple choice (1 answer possible) |
| <i>Rationale</i> | Gather contact information for eventual follow-up. |
| <i>Question</i> | Please indicate the country of the organisation providing the digital public service. Please indicate the country if not in the list above. |
| <i>Question logic</i> | Next question |

A1E.

| | |
|-----------------------|--|
| <i>Name</i> | Contact details |
| <i>Question type</i> | Free text |
| <i>Rationale</i> | Gather contact information for eventual follow-up. |
| <i>Question</i> | Please provide your role in the organisation providing the service |
| <i>Question logic</i> | Next question |

A2A.

| | |
|-----------------------|--|
| <i>Name</i> | Digital public service description |
| <i>Question type</i> | Free Text |
| <i>Rationale</i> | Gain insight into the digital public service the administration provides. |
| <i>Question</i> | A digital public service is a digital service rendered in the public interest. What is the name of the service that you provide to the end users (citizens, businesses or other public administrations)? |
| <i>Examples</i> | <ul style="list-style-type: none"> • Issue of birth certificate for citizens • Submission of yearly income tax declaration for citizens • Issue of an electronic fee for citizens • Electronic Health Record Access • Government e-invoicing for businesses • Cross-Border Vehicle Identification Service for public administrations |
| <i>Question logic</i> | Next question |

A2B.

| | |
|-----------------------|---|
| <i>Name</i> | Digital public service description |
| <i>Question type</i> | Free Text |
| <i>Rationale</i> | Gain insight into the digital public service the administration provides. |
| <i>Question</i> | Please provide the public service catalogue name and URI, if it is applicable for the digital public service. |
| <i>Question logic</i> | Next question |

A2C.

| | |
|-----------------------|---|
| <i>Name</i> | Digital public service description |
| <i>Question type</i> | Free Text |
| <i>Rationale</i> | Gain insight into the digital public service the administration provides. |
| <i>Question</i> | Please give a brief description of the service. |
| <i>Question logic</i> | Next question |

A2D.

| | |
|-----------------------|--|
| <i>Name</i> | Digital public service description |
| <i>Question type</i> | Multiple choice (1 answer possible) |
| <i>Rationale</i> | Gain insight into the digital public service the administration provides. |
| <i>Question</i> | <p>Appearance: How does the service deliver the outcome towards the end user group?</p> <ul style="list-style-type: none"> • The public service delivers the outcome towards the end users via traditional channels e.g. phone, postal service • The public service delivers the outcome towards the end users via digital channels, e.g. through a web portal/website or an application • The service delivers the outcome towards other IT systems (machine-to-machine interface) |
| <i>Question logic</i> | Next question |

A2E.

| | |
|-----------------------|---|
| <i>Name</i> | Digital public service description |
| <i>Question type</i> | Email - format check on email |
| <i>Rationale</i> | Gain insight into the digital public service the administration provides. |
| <i>Question</i> | Please specify the official email address of the contact point for the provided service |
| <i>Question logic</i> | Next question |

A3A.

| | |
|----------------------|-------------------------------------|
| <i>Name</i> | Sector of the service |
| <i>Question type</i> | Multiple choice (1 answer possible) |

| | |
|-----------------------|--|
| <i>Rationale</i> | This question determines the scope / boundaries of the public administration providing the digital public service. |
| <i>Question</i> | Service provider: Which public administration tier is primarily responsible for providing the service? <ul style="list-style-type: none"> • International Public Administration • Central Public Administration • Regional Public Administration • Local Public Administration • Other Legal Entity. In case of “Other Legal Entity”, please indicate in the text below |
| <i>Question logic</i> | Next question |

A3B.

| | |
|-----------------------|---|
| <i>Name</i> | Sector of the service |
| <i>Question type</i> | Single Option |
| <i>Rationale</i> | This question determines the scope / boundaries of the public administration providing the digital public service. |
| <i>Question</i> | Are the solutions provided by a Directorate-General of the European Commission? <ul style="list-style-type: none"> • Yes • No |
| <i>Question logic</i> | Next question |

A3C.

| | |
|----------------------|---|
| <i>Name</i> | Sector of the service |
| <i>Question type</i> | Multiple choice (1 answer possible) |
| <i>Rationale</i> | This question determines the scope / boundaries of the public administration providing the digital public service. |
| <i>Question</i> | Please indicate the Directorate-General of the European Commission <ul style="list-style-type: none"> • Administration and Payment of Individual Entitlements • Agriculture and Rural Development • Budget • Climate Action • Communication • Communications Networks, Content and Technology • Competition • Consumers, Health, Agriculture and Food Executive Agency • Data Protection Officer • Defence Industry and Space • Economic and Financial Affairs • Education, Audiovisual and Culture Executive Agency • Education, Youth, Sport and Culture • Employment, Social Affairs and Inclusion |

- Energy
- Environment
- European Anti-Fraud Office
- European Civil Protection and Humanitarian Aid Operations
- European Climate, Infrastructure and Environment Executive Agency
- European Neighbourhood and Enlargement Negotiations
- European Personnel Selection Office
- European Research Council Executive Agency
- European School of Administration
- Eurostat - European statistics
- Executive Agency for Small and Medium-sized Enterprises
- Financial Stability, Financial Services and Capital Markets Union
- Foreign Policy Instruments
- Health and Food Safety
- Historical Archives Service
- Human Resources and Security
- Informatics
- Infrastructure and Logistics in Brussels
- Infrastructure and Logistics in Luxembourg
- Inspire, Debate, Engage and Accelerate Action
- Internal Audit Service
- Internal Market, Industry, Entrepreneurship and SMEs
- International Partnerships
- Interpretation
- Joint Research Centre
- Justice and Consumers
- Legal Service
- Library and e-Resources Centre
- Maritime Affairs and Fisheries
- Migration and Home Affairs
- Mobility and Transport
- Publications Office
- Regional and Urban Policy
- Research Executive Agency
- Research and Innovation
- Secretariat-General
- Structural Reform Support
- Task Force for Relations with the United Kingdom
- Taxation and Customs Union
- Trade
- Translation

Question logic

Next question

A4.*Name*

Sector of the service

Question type

Multiple choice (1 answer possible)

| | |
|-----------------------|---|
| <i>Rationale</i> | This question determines the scope / boundaries of the public administration providing the digital public service. |
| <i>Question</i> | <p>Please indicate in which sector is the service provided.</p> <ul style="list-style-type: none"> • Education • Public Health • Public Safety • Environmental Protection • Justice • Transportation • Infrastructure • Social Services • Economy/Financial • Other. In case of “Other”, please indicate in the text field below. |
| <i>Question logic</i> | Next question |

A5.

| | |
|-----------------------|--|
| <i>Name</i> | End user group(s) to which the service is delivered |
| <i>Question type</i> | Multiple choice (>1 possible answer) |
| <i>Rationale</i> | Determine the end user group(s) to which the digital public service is delivered. |
| <i>Question</i> | <p>What is the end user group to whom the service is delivered?</p> <ul style="list-style-type: none"> • Public Administrations (A2A) • Citizens (A2C) • Businesses (A2B) |
| <i>Examples</i> | A specific group of businesses; A specific group of citizens; A specific group of public administrations. |
| <i>Question logic</i> | Next question |

A6.

| | |
|-----------------------|---|
| <i>Name</i> | Administrative level |
| <i>Question type</i> | Multiple choice (>1 possible answer) |
| <i>Rationale</i> | Gain insight into the government providing the digital public service. |
| <i>Question</i> | <p>At what administrative level is the service provided (multiple answers are possible)?</p> <ul style="list-style-type: none"> • Local (e.g. city, municipality) • Regional • National • European • International |
| <i>Question logic</i> | Next question |

Maturity scoring: This section is not scored.

5.2.2 Service Delivery (D) - Questions

| D1. | |
|----------------------|---|
| <i>Name</i> | Structure of the data delivered |
| <i>Category</i> | Enabler |
| <i>Weight</i> | 50% |
| <i>Question type</i> | Multiple choice (1 answer possible) |
| <i>Rationale</i> | <p>This item assesses whether and to what extent the service delivers structured data, information and knowledge to its end users. Structured data is highly-organised and formatted in a way so it's easily searchable in relational databases. Unstructured data has no pre-defined format or organization, making it much more difficult to collect, process, and analyse. This item examines the semantic behavioural interoperability specifications of the data, information and knowledge delivered by the service to its end users and/or other services. This item is compliant with the EIRA ABB Data Representation.</p> |
| <i>Question</i> | <p>To what extent does the service deliver structured data, information, and knowledge to its end users?</p> <ul style="list-style-type: none"> • The service does not deliver structured data, information and knowledge to its end users (i.e. is shared through means that cannot be digitally extracted or shared, for example shared data as scanned copies of documents) • The service delivers unstructured but partially machine-readable data, information and knowledge to its end users e.g. word and/or PDF files • The service delivers semi-structured data to its end users e.g. XML, word documents • The service delivers some structured data to its end users following a standard file content format (e.g. spreadsheets) • The service delivers Linked Open Data (LOD) to its end users • Not applicable or not necessary (according to the scope of the service) • No answer |
| <i>Examples</i> | <ul style="list-style-type: none"> • The service uses structured format e.g. XML, JSON, csv or unstructured format e.g. blob/text to exchange data with other services • The service uses widely-used formats such as MS Excel (.xls/.xlsx), MS Access (.mdb/.accdb), dBase (.dbf) and OpenDocument Spreadsheet (.ods) to exchange data with other services • The service uses XML marked-up text (.xml) according to an appropriate DTD or schema, e.g. XHTML 1.0 to exchange data with other services |

Question logic

Next question

D2.

| | |
|-----------------------|--|
| <i>Name</i> | Commonly agreed standards for the semantic description of data delivery |
| <i>Category</i> | Enabler |
| <i>Weight</i> | 50% |
| <i>Question type</i> | Multiple choice (1 answer possible) |
| <i>Rationale</i> | This item examines whether and to what extent the service uses or extends commonly agreed standards for the delivered data, information and knowledge. This item examines the semantic behavioural interoperability specifications of the data, information and knowledge delivered by the service to its end users and/or other services. This item is compliant with the EIRA ABB Data Representation. |
| <i>Question</i> | <p>To what extent does the service use commonly agreed standards to semantically describe the data, information and knowledge delivered? (ontology, data model, data syntax, data format)</p> <ul style="list-style-type: none"> • The service does not use any commonly agreed standards to semantically describe the data, information and knowledge delivered • The service uses custom standards to semantically describe some of the data, information and knowledge delivered • The service uses custom standards to semantically describe most of the data, information and knowledge delivered (e.g. e-Government Core Vocabularies) • The service uses formal standards to semantically describe any data, information and knowledge delivered (e.g. e-Government Core Vocabularies, Asset Description Metadata Schema (ADMS), Data Catalog Vocabulary Application Profile for Data Portals in Europe (DCAT-AP)), Core Public Service Vocabulary Application Profile (CPSV-AP), etc.) • The service uses ontology classes to semantically describe any data, information and knowledge delivered • Not applicable or not necessary (according to the scope of the service) • No answer |
| <i>Examples</i> | <ul style="list-style-type: none"> • The service uses the DCAT Application Profile for Data Portals in Europe (DCAT-AP) to capture the data exchanged • The service uses the standard CPSV-AP to semantically describe the data exchanged and it has extended this standard using national data models. |
| <i>Question logic</i> | Next question |

D3.

| | |
|-----------------------|---|
| <i>Name</i> | Data mapping |
| <i>Category</i> | Enabler |
| <i>Weight</i> | 20% |
| <i>Question type</i> | Multiple choice (1 answer possible) |
| <i>Rationale</i> | <p>This item examines whether there are rules for the data mapping between the service and other services. In view of different data models (across services), this item seeks semantic alignments between the service under assessment and its external environment. Semantic alignment lies in the use of a custom reference data model to translate/map the information from one data format (service 1) to another data format (service 2). It is a semantic agreement that takes place between two organisations / owners of the respective digital public services.</p> <p>This item examines a semantic behavioural interoperability capability that enables and facilitates the service to deliver data information and knowledge towards its end users. This item is compliant with the EIRA v6.1.0 ABB 'Data mapping' which is an equivalence relationship between two data items with ontological value.</p> |
| <i>Question</i> | <p>To what extent does the service provide rules to map the data, information and knowledge delivered?</p> <ul style="list-style-type: none"> • The service does not provide any rules to map the data, information and knowledge delivered • The service provides data mapping rules to map some of the data, information and knowledge delivered • The service provides data mapping rules to map any of the data, information and knowledge delivered • The service provides common semantic tools to map any data, information and knowledge delivered (e.g. mapping.semic.eu) • The service provides in open data format the rules to map any data, information and knowledge delivered • Not applicable or not necessary (according to the scope of the service) • No answer |
| <i>Examples</i> | <ul style="list-style-type: none"> • The service of the national police delivers data to the digital public service of electronic identities using common agreed data mapping specifications |
| <i>Question logic</i> | Next question |

D4.

| | |
|-----------------|-------------------------------------|
| <i>Name</i> | Documentation for the data delivery |
| <i>Category</i> | Enabler |
| <i>Weight</i> | 20% |

| | |
|-----------------------|--|
| <i>Question type</i> | Multiple choice (1 answer possible) |
| <i>Rationale</i> | <p>This item examines the documentation provided by the service as a means to facilitate the end users in understanding and efficiently (re)using the digital outcome of the service.</p> <p>This item examines a semantic behavioural interoperability capability that enables and facilitates the service to deliver data information and knowledge towards its end users.</p> |
| <i>Question</i> | <p>To what extent does the service provide documentation about the data, information and knowledge delivered?</p> <ul style="list-style-type: none"> • The service does not provide any documentation about the delivered data, information and knowledge • The service provides documentation about the delivered data, information and knowledge on an ad-hoc basis (upon request) • The service provides documentation about the delivered data, information and knowledge via a custom channel (e.g. website) • The service provides documentation about the delivered data, information and knowledge via multiple channels (e.g. open data portals/catalogues, website, etc.) • The service provides documentation about the delivered data, information and knowledge via multiple channels (e.g. data portals/catalogues, website, etc.) and it offers a subscription service (e.g. for updates, support, etc.) • Not applicable or not necessary (according to the scope of the service) • No answer |
| <i>Examples</i> | <ul style="list-style-type: none"> • Data formats and types of the service are described in its functional specifications • Data and metadata formats and types of the service are described in multiple documentations |
| <i>Question logic</i> | Next question |

D5.

| | |
|----------------------|---|
| <i>Name</i> | Multilingualism of the data delivered |
| <i>Category</i> | Enabler |
| <i>Weight</i> | 20% |
| <i>Question type</i> | Multiple choice (1 answer possible) |
| <i>Rationale</i> | This item examines the availability of the service documentation in more than one languages as a means to facilitate international and/or multilingual end users in understanding and efficiently (re)using the digital outcome of the service in their language. |

| | |
|-----------------------|--|
| | This item examines a semantic behavioural interoperability capability that enables and facilitates the service to deliver data information and knowledge towards its end users. |
| <i>Question</i> | <p>To what extent does the service provide multilingual documentation about the data, information and knowledge delivered?</p> <ul style="list-style-type: none"> • The service provides documentation in only one language • The service provides documentation in some of the officially recognised languages by the public administration delivering the service, for a certain volume of data • The service provides documentation in all officially recognised languages by the public administration delivering the service, for a certain volume of data • The service provides documentation in all officially recognised national languages, as well as in English, French and German, while covering the full data volume • The service provides documentation in all EU officially recognised languages, while covering the full data volume • Not applicable or not necessary (according to the scope of the service) • No answer |
| <i>Examples</i> | <ul style="list-style-type: none"> • Data and metadata formats and types of the service are described in multiple documentations and are available also in English |
| <i>Question logic</i> | Next question |

| | |
|----------------------|---|
| D6. | |
| <i>Name</i> | Machine-readable documentation for the data delivered |
| <i>Category</i> | Manifestation |
| <i>Weight</i> | 20% |
| <i>Question type</i> | Multiple choice (1 answer possible) |
| <i>Rationale</i> | <p>This item examines the availability of the service documentation in machine-readable format as a means to facilitate automatic-processing and efficient (re)use of the digital outcome (and respective metadata) of the service. Machine readable documentation allows its automatic update, following the latest updates of the service, in real-time, while it allows sharing the respective service and/or its APIs automatically and in just seconds.</p> <p>This item examines a semantic behavioural interoperability capability that enables and facilitates the service to deliver data information and knowledge towards its end users. This item is compliant with the EIRA ABB Data Representation.</p> |
| <i>Question</i> | To what extent does the service provide machine-readable documentation about the data, information and knowledge delivered? |

| | |
|-----------------------|--|
| | <ul style="list-style-type: none"> • The service does not provide any documentation about the data, information and knowledge delivered. • The service provides human-readable documentation about the data, information and knowledge delivered. • The service provides ad-hoc machine-readable documentation about the data, information and knowledge delivered (e.g. provides an unformatted introduction and explanation of the data, information and knowledge delivered). • The service provides formatted machine-readable documentation about the data, information and knowledge delivered (e.g. written in JSON). • The service provides a standard formatted machine-readable documentation about the data, information and knowledge delivered (e.g. following an API schema). • Not applicable or not necessary (according to the scope of the service) • No answer |
| <i>Examples</i> | <ul style="list-style-type: none"> • Agencies should list private, internal, and public-facing web APIs as part of their Enterprise Data Inventory and Public Data Listing data.json files. APIs can have machine readable documentation (like Swagger, RAML, API Blueprint, HAL, Hydra, etc). (https://resources.data.gov/) |
| <i>Question logic</i> | Next question |

D7.

| | |
|----------------------|--|
| <i>Name</i> | Use of metadata |
| <i>Category</i> | Enabler |
| <i>Weight</i> | 20% |
| <i>Question type</i> | Multiple choice (1 answer possible) |
| <i>Rationale</i> | <p>This item examines whether metadata documentation is available to give guidelines on how to reuse the data, information and knowledge delivered by the service to its end users. Metadata documentation involves also policies and processes that ensure information can be integrated, accessed, shared, linked, analyzed and maintained to best effect across the organisation.</p> <p>This item examines a semantic behavioural interoperability capability that enables and facilitates the service to deliver data information and knowledge towards its end users. This item is compliant with the EIRA ABB Metadata.</p> |
| <i>Question</i> | <p>To what extent does the service provide metadata documentation about the data, information and knowledge delivered?</p> <ul style="list-style-type: none"> • The service does not provide any metadata documentation about the data, information and knowledge delivered |

| | |
|-----------------------|--|
| | <ul style="list-style-type: none"> • The service provides project-level metadata documentation about the data, information and knowledge delivered (e.g. high-level description) • The service provides project-level and data-level metadata documentation about the data, information and knowledge delivered (e.g. information about the data elements, descriptions, etc. in an unformatted way) • The service provides project-level, data-level and architecture-level metadata documentation about the data, information and knowledge delivered • The service provides project-level, data-level and architecture-level metadata documentation which is in a standard format for the specific use of data (e.g. a format from DCC, FAIRSharing, etc) • Not applicable or not necessary (according to the scope of the service) • No answer |
| <i>Examples</i> | <ul style="list-style-type: none"> • ETL vendors offer metadata management applications for cataloging and managing ETL metadata, as well as metadata associated with source and target applications • The Eurovoc thesaurus and the European skills, competence and occupations (ESCO) taxonomy is a metadata taxonomy/code list • The Dublinked portal is DCAT-compliant, meaning that all its metadata is available in a standardised, semantic format. |
| <i>Question logic</i> | Next question |
| D8. | |
| <i>Name</i> | Master data repository |
| <i>Category</i> | Manifestation |
| <i>Weight</i> | 100% |
| <i>Question type</i> | Multiple choice (1 answer possible) |
| <i>Rationale</i> | <p>This item assesses the level of reuse of existing, published data for the purpose of other services. The greater the level of data reuse by other public services and by other public administrations, the better, as it ensures semantic interoperability among them.</p> <p>This item examines a semantic behavioural interoperability manifestation of the service delivering data, information and knowledge towards its end users (in terms of user experience). This item is compliant with the EIRA ABB Shared Knowledge Content.</p> |
| <i>Question</i> | <p>To what extent does the service deliver data, information and knowledge that is input for a Master data repository?</p> <ul style="list-style-type: none"> • The service does not deliver data, information and knowledge to any Master data repository • The service delivers basic data, information and knowledge to a Master data repository |

| | |
|-----------------------|--|
| | <ul style="list-style-type: none"> • The service delivers data, information and knowledge to specific Master Data repositories • The service delivers data, information and knowledge to a national Master Data repository (e.g. business registry) • The service delivers data, information and knowledge to a trans-European Master Data repository (e.g. reference data or base registry across borders) • Not applicable or not necessary (according to the scope of the service) • No answer |
| <i>Examples</i> | <ul style="list-style-type: none"> • An example of market master data is the Universal Product Code ("UPC") found on consumer products • An example of master data source is the eID since EU citizens can use the eID means they use at national level also to access public services across borders in other Member States. • An example of master data source at national level is the online service of the Belgian government that generates the national registration number, which is a unique identification number of natural persons who are registered in Belgium. |
| <i>Question logic</i> | Next question |

Maturity scoring: The overall weight of this area in the total maturity score is 70%. For more information, please see [section 6.3](#).

5.2.3 Service Consumption (C) - Questions

| C1. | |
|----------------------|--|
| <i>Name</i> | Structure of the data consumed |
| <i>Category</i> | Manifestation |
| <i>Weight</i> | 50% |
| <i>Question type</i> | Multiple choice (1 answer possible) |
| <i>Rationale</i> | This item aims to assess the semantic behavioural interoperability specifications of the data, information and knowledge consumed by the digital public service, by examining the structure of the data consumed. We start from the structure (or lack of) of the data that the service consumes from other services. It's the first specification to examine for the data/information/knowledge consumed from the digital public service under assessment. Structured data is highly-organized and formatted in a way so it's easily searchable in relational databases. Unstructured data has no pre-defined format or organization, making it much more difficult to collect, process, and analyze. |

| | |
|-----------------------|---|
| <i>Question</i> | <p>This item examines the semantic behavioural interoperability specifications of data, information and knowledge consumed by the service from other services. This item is compliant with the EIRA ABB Data Representation.</p> <p>To what extent does the service consume structured data, information and knowledge from other services or end users?</p> <ul style="list-style-type: none"> • The service consumes unstructured data, information and knowledge (e.g. image files) • The service consumes semi-structured machine-readable data, information and knowledge from other services, e.g. word and/or PDF files • The service consumes structured data e.g. spreadsheets • The service consumes structured data from other services, e.g. spreadsheets, according to an open standard • The service consumes Linked Open Data (LOD) • Not applicable or not necessary (according to the scope of the service) • No answer |
| <i>Examples</i> | <ul style="list-style-type: none"> • The service consumes structured format e.g. XML, JSON, csv or unstructured format e.g. blob/text to exchange data with other services • The service consumes widely-used formats such as MS Excel (.xls/.xlsx), MS Access (.mdb/.accdb), dBase (.dbf) and OpenDocument Spreadsheet (.ods) to exchange data with other services • The service consumes XML marked-up text (.xml) according to an appropriate DTD or schema, e.g. XHMTL 1.0 to exchange data with other services |
| <i>Question logic</i> | Next question |
| C2. | |
| <i>Name</i> | Commonly agreed standards for the semantic description of data consumption |
| <i>Category</i> | Enabler |
| <i>Weight</i> | 50% |
| <i>Question type</i> | Multiple choice (1 answer possible) |
| <i>Rationale</i> | <p>This item examines whether and to what extent the service uses or extends commonly agreed standards for to consume data, information and knowledge.</p> <p>This item examines the semantic behavioural interoperability specifications of data, information and knowledge consumed by the service from other services. This item is compliant with the EIRA ABB Data Representation.</p> |
| <i>Question</i> | <p>To what extent does the service use commonly agreed standards to semantically align the data, information and knowledge consumed? (ontology, data model, data syntax, data format)</p> <ul style="list-style-type: none"> • The service does not use any commonly agreed standards to semantically align the data, information and knowledge consumed |

| | |
|-----------------------|--|
| | <ul style="list-style-type: none"> • The service uses custom standards to semantically align some of the data, information and knowledge consumed • The service uses formal standards to semantically align most of the data, information and knowledge consumed (e.g. e-Government Core Vocabularies) • The service uses formal standards to semantically align any data, information and knowledge consumed (e.g. e-Government Core Vocabularies, Asset Description Metadata Schema (ADMS) or DCAT Application Profile for Data Portals in Europe (DCAT-AP)), CPSV-AP, etc.) • The service uses ontology classes to semantically describe any data, information and knowledge consumed • Not applicable or not necessary (according to the scope of the service) • No answer |
| <i>Examples</i> | <ul style="list-style-type: none"> • National banks consumes data from the electronic administrative fee under a semantic alignment using custom data models • The service of electronic identities consumes data from other services using ftp server FileZilla |
| <i>Question logic</i> | Next question |

C3.

| | |
|----------------------|---|
| <i>Name</i> | Data mapping in consumption |
| <i>Category</i> | Manifestation |
| <i>Weight</i> | 50% |
| <i>Question type</i> | Multiple choice (1 answer possible) |
| <i>Rationale</i> | <p>This item assesses the semantic behavioural interoperability specifications of the data, information and knowledge consumed by the service, by examining whether there are any rules for the data mapping between the service and other services. In view of different data models (across different public services), we ask about semantic alignments between the service that we examine and its external environment (i.e. from where it consumes). Semantic alignment lies in the use of a custom reference data model to translate/map the information from one data format (service 1) to another data format (service 2). It is a semantic agreement that takes place between two organisations / owners of the respective services.</p> <p>This item examines a semantic behavioural interoperability capability that enables the service to consume data, information and knowledge that are already reusable, preferably in an automated manner. This item is compliant with the EIRA ABB Data Mapping Catalogue.</p> |
| <i>Question</i> | To what extent does the service apply specific rules to map the data, information and knowledge it consumes from other services? |

| | |
|-----------------------|--|
| | <ul style="list-style-type: none"> • The service does not apply any rules to map the data, information and knowledge consumed • The service applies data mapping rules to map some of the data, information and knowledge consumed • The service applies data mapping rules to map any of the data, information and knowledge consumed • The service applies common semantic tools to map any data, information and knowledge consumed (e.g. mapping.semic.eu) • The service applies rules, in open data format, to map any data, information and knowledge delivered • Not applicable or not necessary (according to the scope of the service) • No answer |
| <i>Examples</i> | <ul style="list-style-type: none"> • The service of the national police delivers data to the digital public service of electronic identities using common agreed data mapping specifications |
| <i>Question logic</i> | Next question |

C4.

| | |
|----------------------|---|
| <i>Name</i> | Machine-readable documentation for the data consumed |
| <i>Category</i> | Manifestation |
| <i>Weight</i> | 50% |
| <i>Question type</i> | Multiple choice (1 answer possible) |
| <i>Rationale</i> | This item assesses the semantic behavioural interoperability capabilities that enable the service consumption from other services by examining how the service processes the metadata consumed from other services. Management of the metadata involves establishing policies and processes that ensure information can be integrated, accessed, shared, linked, analyzed and maintained to best effect across the organization. This item examines a semantic behavioural interoperability capability that enables the digital public service to consume data, information and knowledge that are already reusable, preferably in an automated manner. This item is compliant with the EIRA ABB Data Representation. |
| <i>Question</i> | <p>To what extent does the service consume machine-readable documentation about the data, information and knowledge consumed?</p> <ul style="list-style-type: none"> • The service does not consume any documentation about the data, information and knowledge consumed. • The service consumes human-readable documentation about the data, information and knowledge consumed. • The service consumes ad-hoc machine-readable documentation about the data, information and knowledge consumed (e.g. provides an unformatted introduction and explanation of the data, information and knowledge consumed). |

| | |
|-----------------------|---|
| | <ul style="list-style-type: none"> • The service consumes formatted machine-readable documentation about the data, information and knowledge consumed (e.g. written in JSON). • The service consumes a standard formatted machine-readable documentation about the data, information and knowledge consumed (e.g. following an API schema). • Not applicable or not necessary (according to the scope of the service) • No answer |
| <i>Examples</i> | <ul style="list-style-type: none"> • ETL vendors offer metadata management applications for cataloging and managing ETL metadata, as well as metadata associated with source and target applications • The Eurovoc thesaurus and the European skills, competence and occupations (ESCO) taxonomy is a metadata taxonomy/code list • The Dublinked portal is DCAT-compliant, meaning that all its metadata is available in a standardised, semantic format. |
| <i>Question logic</i> | Next question |

C5.

| | |
|----------------------|--|
| <i>Name</i> | Master data repository in consumption |
| <i>Category</i> | Manifestation |
| <i>Weight</i> | 100% |
| <i>Question type</i> | Multiple choice (1 answer possible) |
| <i>Rationale</i> | <p>This item aims to assess how the service manifests its semantic behavioural interoperability performance towards its end users. This item examines whether the service consumes data from Master data sources. The greater the level of data reuse by other public services and by other public administrations, the better, as it ensures semantic interoperability among them.</p> <p>This item examines a semantic behavioural interoperability manifestation of the service consuming data, information and knowledge (in terms of performance). This item is compliant with the EIRA ABB Shared Knowledge Content.</p> |
| <i>Question</i> | <p>To what extent does the service consume data, information and knowledge from a Master data repository?</p> <ul style="list-style-type: none"> • The service does not consume data, information and knowledge from any Master data repository • The service consumes basic data, information and knowledge from limited Master data repositories • The service consumes data, information and knowledge from specific Master Data repositories • The service consumes delivers data, information and knowledge from a national Master Data repository (e.g. business registry) |

Examples

- The service consumes data, information and knowledge from a trans-European Master Data repository (e.g. reference data or base registry across borders)
- Not applicable or not necessary (according to the scope of the service)
- No answer

Question logic

Next question

- An example of master data source is the eID since EU citizens can use the eID means they use at national level also to access public services across borders in other Member States.
- An example of master data source at national level is the online service of the Belgian government that generates the national registration number, which is a unique identification number of natural persons who are registered in Belgium.

Maturity scoring: The overall weight of this area in the total maturity score is 30%. For more information, please see [section 6.3](#).

6 SIMAPS RECOMMENDATIONS

The main objective of the **Semantic Interoperability Maturity Assessment of Public Services (SIMAPS)** is to provide insight into how digital public services can improve their semantic behavioural interoperability maturity. After filling in the online questionnaire, the respondent receives a PDF with advice on how to improve the semantic behavioural interoperability of his digital public service. This section presents how these recommendations are generated.

6.1 Principles

The following five principles are applied to generate recommendations:

- **Principle 1:** Each semantic interoperability items include 5 options, each one of them corresponding to one of the 5 interoperability levels;
- **Principle 2:** The improvement tables provide recommendations on how to improve maturity gradually for a specific semantic interoperability attribute;
- **Principle 3:** When a digital public service does not yet reach the maximum level for a specific semantic interoperability item, a recommendation is given to make the step towards the next semantic interoperability level;
- **Principle 4:** When a digital public service successfully attains the maximum maturity level for a semantic interoperability item, no recommendation is given⁸;
- **Principle 5:** When the maturity improvement is not based on specific semantic interoperability characteristics per level, a sliding scale (e.g. from less to more) is used. In this scenario, a generic recommendation (not maturity level specific) is given to improve the maturity further along the sliding scale.

6.2 Recommendations' overview

For each improvement step, the recommendation tables in the following chapters show:

- The question the recommendation relates to;
- The assessed maturity level;
- The next maturity level to be reached through improvement⁹;
- The recommendation as to how to reach the next maturity level.

⁸ The reason for this is that in this case- according to the model- the service is already implementing a semantic interoperability attribute in a way that it corresponds to best practice. There are no direct recommendations to improve further

⁹ With the exception when this is considered a sliding scale

6.3 Recommendations

6.3.1 Service Delivery (D) – Scoring table

Table 3: Service Delivery scoring model

| Item | Ad hoc (1) | Opportunistic (2) | Essential (3) | Sustainable (4) | Seamless (5) | N/A | No Answer |
|------|--|---|---|---|--|---|-----------|
| D1 | The service does not deliver structured data, information and knowledge to its end users (i.e. it delivers unstructured data, like e.g. posts, emails, presentations). | The service delivers partially semi-structured machine-readable data, information and knowledge to its end users e.g. delimited files, word and/or PDF files. | The service delivers semi-structured data to its end users e.g. XML, word documents. | The service delivers some structured data to its end users following a specific structure (e.g. spreadsheets). | The service delivers Linked Open Data (LOD) to its end users | Not applicable or not necessary (according to the scope of the service) | No answer |
| D2 | The service does not use any commonly agreed standards to semantically describe the data, information and knowledge delivered | The service uses custom standards to semantically describe some of the data, information and knowledge delivered. | The service uses standards such as e-Government Core Vocabularies to semantically describe some of the data, information and knowledge delivered. | The service uses formal standards to semantically describe any data, information and knowledge delivered (e.g. ADMS, DCAT-AP, CPSV-AP, etc.). | The service uses ontology classes to semantically describe any data, information and knowledge delivered | Not applicable or not necessary (according to the scope of the service) | No answer |

| Item | Ad hoc (1) | Opportunistic (2) | Essential (3) | Sustainable (4) | Seamless (5) | N/A | No Answer |
|------|--|---|---|---|---|---|-----------|
| D3 | The does not provide any rules to map the data, information and knowledge delivered | The service provides data mapping rules to map some of the data, information and knowledge delivered | The service provides data mapping rules to map any of the data, information and knowledge delivered | The service provides common semantic tools to map any data, information and knowledge delivered (e.g. mapping.semic.eu). | The service provides in open data format the rules to map any data, information and knowledge delivered | Not applicable or not necessary (according to the scope of the service) | No answer |
| D4 | The service does not provide any documentation about the delivered data, information and knowledge | The service provides documentation about the delivered data, information and knowledge on an ad-hoc basis (upon request) | The service provides documentation about the delivered data, information and knowledge via a custom channel (e.g. website) | The service provides documentation about the delivered data, information and knowledge via multiple channels (e.g. open data portals/catalogues, website, etc.) | The service provides documentation about the delivered data, information and knowledge via multiple channels (e.g. data portals/catalogues, website, etc.) and it offers a subscription service (e.g. for updates, support, etc.) | Not applicable or not necessary (according to the scope of the service) | No answer |
| D5 | The service provides documentation in only one language | The service provides documentation in some of the officially recognised languages by the public administration delivering the service, for a certain volume of data | The service provides documentation in all officially recognised languages by the public administration delivering the service, for a certain volume of data | The service provides documentation in all officially recognised national languages, as well as in English, French and German, while covering the full data volume | The service provides documentation in all EU officially recognised languages, while covering the full data volume | Not applicable or not necessary (according to the scope of the service) | No answer |

| Item | Ad hoc (1) | Opportunistic (2) | Essential (3) | Sustainable (4) | Seamless (5) | N/A | No Answer |
|------|---|---|---|--|--|---|-----------|
| D6 | The service does not provide any documentation about the data, information and knowledge delivered. | The service provides human-readable documentation about the data, information and knowledge delivered. | The service provides ad-hoc machine-readable documentation about the data, information and knowledge delivered (e.g. provides an unformatted introduction and explanation of the data, information and knowledge delivered) | The service provides formatted machine-readable documentation about the data, information and knowledge delivered (e.g. written in JSON). | The service provides a standard formatted machine-readable documentation about the data, information and knowledge delivered (e.g. following an API schema). | Not applicable or not necessary (according to the scope of the service) | No answer |
| D7 | The service does not provide any metadata documentation about the data, information and knowledge delivered | The service provides project-level metadata documentation about the data, information and knowledge delivered (e.g. high-level description) | The service provides project-level and data-level metadata documentation about the data, information and knowledge delivered (e.g. information about the data elements, descriptions, etc. in an unformatted way) | The service provides project-level, data-level and architecture-level metadata documentation about the data, information and knowledge delivered | The service provides project-level, data-level and architecture-level metadata documentation which is in a standard format for the specific use of data (e.g. a format from DCC, FAIRSharing, etc) | Not applicable or not necessary (according to the scope of the service) | No answer |

| Item | Ad hoc (1) | Opportunistic (2) | Essential (3) | Sustainable (4) | Seamless (5) | N/A | No Answer |
|------|---|---|--|---|---|---|-----------|
| D8 | The service does not deliver data, information and knowledge to any Master data repository. | The service delivers basic data, information and knowledge to a Master data repository. | The service delivers data, information and knowledge to specific Master Data repositories | The service delivers data, information and knowledge to a national Master Data repository (e.g. business registry). | The service delivers data, information and knowledge to a trans-European Master Data repository (e.g. reference data or base registry across borders) | Not applicable or not necessary (according to the scope of the service) | No answer |

6.3.2 Service Delivery (D) – Recommendations

The table below presents the respective recommendation to each option in SIMAPS questionnaire. As mentioned above, the purpose of the recommendations is to propose the needed actions to be taken by the digital public service owners in order to **achieve a higher level of semantic interoperability maturity**.

In case the selected option is associated to “Seamless level (5)”, then no action is required from the public service owners and the recommendation is by default “Congratulations, you are at the Seamless level”.

Table 4: Service Delivery Recommendations

| Question | Addressed Level | Next Level | Recommendation |
|------------|-------------------|-------------------|---|
| D1. | Ad hoc (1) | Opportunistic (2) | Currently, the service does not deliver structured data, information and knowledge to its end users (i.e. it delivers unstructured data, like e.g. posts, emails, presentations). Consider performing the necessary actions so as to enable the service to partially deliver machine-readable data, information and knowledge to its end users e.g. word and/or PDF files |
| | Opportunistic (2) | Essential (3) | Currently, the service delivers partially semi-structured machine-readable data, information and knowledge to its end users e.g. delimited files, word and/or PDF files. Consider performing the necessary actions so as to enable the service to deliver all data in a semi-structured format to its end users e.g. delimited files, spreadsheet, word documents |
| | Essential (3) | Sustainable (4) | Currently, the service delivers semi-structured data to its end users e.g. XML, word documents. Consider performing the necessary actions so as to enable the service to also partially deliver structured data to its end users, following a specific structure, e.g. spreadsheets |

| Question | Addressed Level | Next Level | Recommendation |
|------------|-------------------|-------------------|---|
| | Sustainable (4) | Seamless (5) | Currently, the service delivers some structured data to its end users following a specific structure (e.g. spreadsheets). Consider performing the necessary actions so as to enable the service to deliver any data in a structured format, e.g. spreadsheets, tabular form of data which can be queried, etc. |
| D2. | Ad hoc (1) | Opportunistic (2) | Currently, the service does not use any commonly agreed standards to semantically describe the data, information and knowledge delivered. Consider performing the necessary actions so as to enable the service to use custom standards to semantically describe some of the data, information and knowledge delivered. |
| | Opportunistic (2) | Essential (3) | Currently, the service uses custom standards to semantically describe some of the data, information and knowledge delivered. Consider performing the necessary actions so as to enable the service to use open standards such as e-Government Core Vocabularies to semantically describe some of the data, information and knowledge delivered. |
| | Essential (3) | Sustainable (4) | Currently, the service uses standards such as e-Government Core Vocabularies to semantically describe some of the data, information and knowledge delivered. Consider performing the necessary actions so as to enable the service to use formal standards to semantically describe any data, information and knowledge delivered (e.g. ADMS, DCAT-AP, CPSV-AP, etc.) |
| | Sustainable (4) | Seamless (5) | Currently, the service uses formal standards to semantically describe any data, information and knowledge delivered (e.g. ADMS, DCAT-AP, CPSV-AP, etc.). Consider performing the necessary actions so as to enable the service to use ontology classes to semantically describe any data, information and knowledge delivered. |
| D3. | Ad hoc (1) | Opportunistic (2) | Currently, the service does not provide any rules to map the data, information and knowledge delivered. Consider performing the necessary actions so as to enable the service to provide data mapping rules to map some of the data, information and knowledge delivered. This refinement will enable limited semantic behavioural interoperability with some of its end users. |
| | Opportunistic (2) | Essential (3) | Currently, the service provides data mapping rules to map some of the data, information and knowledge delivered. Consider performing the necessary actions so as to enable the service to provide data mapping rules to map any of the data, information and knowledge delivered. |

| Question | Addressed Level | Next Level | Recommendation |
|------------|-------------------|-------------------|--|
| | Essential (3) | Sustainable (4) | Currently, the service provides data mapping rules to map any of the data, information and knowledge delivered. Consider performing the necessary actions so as to enable the service to provide common semantic tools to map any data, information and knowledge delivered (e.g. mapping.semic.eu) for harmonizing different data models and facilitating the interoperable and (semi-)automatic exchange of information |
| | Sustainable (4) | Seamless (5) | Currently, the service provides common semantic tools to map any data, information and knowledge delivered (e.g. mapping.semic.eu). Consider performing the necessary actions so as to enable the service to provide in an open data format the rules to map any data, information and knowledge delivered. |
| D4. | Ad hoc (1) | Opportunistic (2) | Currently, the service does not provide any documentation on the delivered data, information and knowledge. Consider performing the necessary actions so as to enable the service to provide documentation about the delivered data, information and knowledge on an ad-hoc basis (upon request). |
| | Opportunistic (2) | Essential (3) | Currently, the service provides documentation about the delivered data, information and knowledge on an ad-hoc basis (upon request). Consider performing the necessary actions so as to enable the service to provide documentation about the delivered data, information and knowledge via a custom channel (e.g. website). |
| | Essential (3) | Sustainable (4) | Currently, the service provides documentation about the delivered data, information and knowledge via a custom channel (e.g. website). Consider performing the necessary actions so as to provide documentation about the delivered data, information and knowledge via multiple channels (e.g. open data portals/catalogues, website, etc.) |
| | Sustainable (4) | Seamless (5) | Currently, the service provides documentation about the delivered data, information and knowledge via multiple channels (e.g. data portals/catalogues, website, etc.). Consider performing the necessary actions so as to enable the service to provide documentation about the delivered data, information and knowledge via multiple channels (e.g. data portals/catalogues, website, etc.) also offering a subscription service (e.g. for updates, support, etc.) |

| Question | Addressed Level | Next Level | Recommendation |
|------------|-------------------|-------------------|---|
| D5. | Ad hoc (1) | Opportunistic (2) | Currently, the service does not provide any multilingual documentation on the delivered data, information and knowledge. Consider performing the necessary actions so as to enable the service to provide documentation about the data, information and knowledge delivered in some of the officially recognised languages by the public administration delivering the digital public service. |
| | Opportunistic (2) | Essential (3) | Currently, the service provides documentation about the data, information and knowledge delivered in some of the officially recognised languages by the public administration delivering the digital public service. Consider performing the necessary actions so as to enable the service to provide documentation about the data, information and knowledge delivered in all officially recognised languages by the public administration delivering the digital public service. |
| | Essential (3) | Sustainable (4) | Currently, the service provides documentation about the data, information and knowledge delivered in all officially recognised languages by the public administration delivering the digital public service. Consider performing the necessary actions so as to enable the service to provide documentation about the data, information and knowledge delivered in all officially recognised national languages, as well as in English and French. |
| | Sustainable (4) | Seamless (5) | Currently, the service provides documentation about the data, information and knowledge delivered in all officially recognised national languages, as well as in English and French. Consider performing the necessary actions so as to enable the service to provide documentation about the data, information and knowledge delivered in all EU officially recognised languages. |
| D6. | Ad hoc (1) | Opportunistic (2) | Currently, the service does not provide any documentation about the data, information and knowledge delivered. Consider performing the necessary actions so as to enable the service to provide, at least, human-readable documentation about the data, information and knowledge delivered. |

| Question | Addressed Level | Next Level | Recommendation |
|------------|-------------------|-------------------|--|
| | Opportunistic (2) | Essential (3) | Currently, the service provides human-readable documentation about the data, information and knowledge delivered.. Consider performing the necessary actions so as to enable the service to provide, at least, ad-hoc machine-readable documentation about the data, information and knowledge delivered (e.g. provides an unformatted introduction and explanation of the data, information and knowledge delivered) |
| | Essential (3) | Sustainable (4) | Currently, the service provides ad-hoc machine-readable documentation about the data, information and knowledge delivered (e.g. provides an unformatted introduction and explanation of the data, information and knowledge delivered). Consider performing the necessary actions so as to enable the service to provide formatted machine-readable documentation about the data, information and knowledge (e.g. written in JSON). |
| | Sustainable (4) | Seamless (5) | Currently, the service provides formatted machine-readable documentation about the data, information and knowledge delivered (e.g. written in JSON). Consider performing the necessary actions so as to enable the service to provide formatted machine-readable documentation about the data in multiple open formats (e.g., JSON, XML, etc.) |
| D7. | Ad hoc (1) | Opportunistic (2) | Currently, the service does not provide any metadata documentation about the data, information and knowledge delivered. Consider performing the necessary actions so as to enable the service to provide, at least, ad-hoc metadata documentation about the data, information and knowledge delivered (e.g. high-level description). |
| | Opportunistic (2) | Essential (3) | Currently, the service provides ad-hoc metadata documentation about the data, information and knowledge delivered (e.g. high-level description). Consider performing the necessary actions so as to enable the service to provide, at least, non-standardised metadata documentation about the data, information and knowledge delivered (e.g. information about the data elements, descriptions, etc. in an unformatted way). |

| Question | Addressed Level | Next Level | Recommendation |
|------------|-------------------|-------------------|---|
| | Essential (3) | Sustainable (4) | Currently, the service provides non-standardised metadata documentation about the data, information and knowledge delivered (e.g. information about the data elements, descriptions, etc. in an unformatted way). Consider performing the necessary actions so as to enable the service to provide standardised metadata documentation about the data, information and knowledge delivered (e.g. in JSON format). |
| | Sustainable (4) | Seamless (5) | Currently, the service provides standardised metadata documentation about the data, information and knowledge delivered (e.g. in JSON format). Consider performing the necessary actions so as to enable the service to provide standardised, semantically formatted metadata documentation about the data, information and knowledge delivered, published as a Metadata Application Profile (MAP) or in a metadata repository (e.g. in the form of code lists/taxonomies). |
| D8. | Ad hoc (1) | Opportunistic (2) | Currently, the service does not deliver data, information and knowledge to any Master data repository. Consider performing the necessary actions so as to enable the service to deliver basic data, information and knowledge to a Master data repository. |
| | Opportunistic (2) | Essential (3) | Currently, the service delivers basic data, information and knowledge to a Master data repository. Consider performing the necessary actions so as to enable the service to deliver data, information and knowledge to specific Master Data repositories. |
| | Essential (3) | Sustainable (4) | Currently, the digital public service delivers data, information and knowledge to specific Master Data repositories. Consider performing the necessary actions so as to enable the service to deliver data, information and knowledge to a national Master Data repository (e.g. business registry). |
| | Sustainable (4) | Seamless (5) | Currently, the service delivers data, information and knowledge to a national Master Data repository (e.g. business registry). Consider performing the necessary actions so as to enable the service to deliver data, information and knowledge to a trans-European Master Data repository (e.g. reference data or base registry across borders). |

6.3.3 Service Consumption (C) – Scoring table

Table 5: Service Consumption scoring model

| Item | Ad hoc (1) | Opportunistic (2) | Essential (3) | Sustainable (4) | Seamless (5) | N/A | No Answer |
|------|--|---|---|---|---|---|-----------|
| C1 | The service consumes unstructured data, information and knowledge. Although they might be human-readable, they are not machine-readable. | The service uses custom standards to semantically align some of the data, information and knowledge consumed. | The service consumes machine-readable and structured data, information and knowledge from its end users. | The service consumes machine-readable and structured data, information and knowledge, following a commonly agreed standard or open specification. | The service consumes Linked Open Data (LOD) | Not applicable or not necessary (according to the scope of the service) | No answer |
| C2 | The service does not use any commonly agreed standards to semantically align the data, information and knowledge consumed | The service uses custom standards to semantically align some of the data, information and knowledge consumed | The service uses standards such as e-Government Core Vocabularies to semantically align most of the data, information and knowledge consumed. | The service uses formal standards to semantically align any data, information and knowledge consumed (like ADMS, DCAT-AP, CPSV-AP, etc.). | The service uses ontology classes to semantically describe any data, information and knowledge consumed | Not applicable or not necessary (according to the scope of the service) | No answer |
| C3 | The service does not apply any rules to map the data, information and knowledge consumed | The service applies data mapping rules to map some of the data, information and knowledge consumed | The service applies data mapping rules to map any of the data, information and knowledge consumed | The service applies common semantic tools to map any data, information and knowledge consumed (e.g. mapping.semic.eu) | The service applies rules, in open data format, to map any data, information and knowledge delivered | Not applicable or not necessary (according to the scope of the service) | No answer |

| Item | Ad hoc (1) | Opportunistic (2) | Essential (3) | Sustainable (4) | Seamless (5) | N/A | No Answer |
|------|--|---|--|---|---|---|-----------|
| C4 | The service does not consume any documentation about the data, information and knowledge consumed. | The service consumes human-readable documentation about the data, information and knowledge consumed. | The service consumes ad-hoc machine-readable documentation about the data, information and knowledge consumed (e.g. provides an unformatted introduction and explanation of the data, information and knowledge consumed). | The service provides formatted machine-readable documentation about the data, information and knowledge delivered (e.g. written in JSON). | The service consumes a standard formatted machine-readable documentation about the data, information and knowledge consumed (e.g. following an API schema). | Not applicable or not necessary (according to the scope of the service) | No answer |
| C5 | The service does not consume data, information and knowledge from any Master data repository | The service consumes basic data, information and knowledge from a Master data repository. | The service consumes data, information and knowledge from specific Master Data repositories | The service consumes delivers data, information and knowledge from a national Master Data repository (e.g. business registry) | The service consumes data, information and knowledge from a trans-European Master Data repository (e.g. reference data or base registry across borders) | Not applicable or not necessary (according to the scope of the service) | No answer |

6.3.4 Service Consumption (C) – Recommendations

Table 6: Service Consumption Recommendations

| Question | Addressed Level | Next Level | Recommendation |
|------------|-------------------|-------------------|---|
| C1. | Ad hoc (1) | Opportunistic (2) | Currently, the service consumes unstructured data, information and knowledge. Although they might be human-readable, they are not machine-readable. Consider performing the necessary actions so as to enable the service to consume data, information and knowledge in a machine-readable and processable format (e.g. PDF, word files, etc.). |
| | Opportunistic (2) | Essential (3) | Currently, the service consumes machine-readable semi-structured data, information and knowledge from its end users. Consider performing the necessary actions so as to enable the service to consume machine-readable and structured data, information and knowledge from client services (e.g. spreadsheet, etc.). |
| | Essential (3) | Sustainable (4) | Currently, the service consumes machine-readable and structured data, information and knowledge from its end users. Consider performing the necessary actions so as to enable the service to follow a commonly agreed or open specification to consume structured, machine-readable data, information and knowledge from client services. |
| | Sustainable (4) | Seamless (5) | Currently, the consumes machine-readable and structured data, information and knowledge, following a commonly agreed standard or open specification. Consider performing the necessary actions so as to enable the service to consume connected and enriched metadata so that different representations of the same content can be found, and links made between related resources. |
| C2. | Ad hoc (1) | Opportunistic (2) | Currently, the service does not use any commonly agreed standards to semantically align the data, information and knowledge consumed. Consider performing the necessary actions so as to enable the service to use custom standards to semantically align some of the data, information and knowledge consumed. |
| | Opportunistic (2) | Essential (3) | Currently, the service uses custom standards to semantically align some of the data, information and knowledge consumed. Consider performing the necessary actions so as to enable the service to use open standards such as e-Government Core Vocabularies to semantically align most of the data, information and knowledge consumed. |
| | Essential (3) | Sustainable (4) | Currently, the service uses standards such as e-Government Core Vocabularies to semantically align most of the data, information and knowledge consumed. Consider performing the necessary actions so as to enable the service to use formal standards such as Asset Description Metadata Schema (ADMS) or DCAT Application Profile for Data Portals in Europe (DCAT-AP)), CPSV-AP to semantically align any data, information and knowledge consumed. |

| Question | Addressed Level | Next Level | Recommendation |
|------------|-------------------|-------------------|--|
| | Sustainable (4) | Seamless (5) | Currently, the service uses formal standards to semantically align any data, information and knowledge consumed (like ADMS, DCAT-AP, CPSV-AP, etc.). Consider performing the necessary actions so as to enable the service to use ontology classes to semantically align any data, information and knowledge consumed. |
| C3. | Ad hoc (1) | Opportunistic (2) | Currently, the service does not apply any rules to map the data, information and knowledge consumed. Consider performing the necessary actions so as to enable the service to apply data mapping rules to map some of the data, information and knowledge delivered. |
| | Opportunistic (2) | Essential (3) | Currently, the service applies data mapping rules to map some of the data, information and knowledge consumed. Consider performing the necessary actions so as to enable the service to apply data mapping rules to map any of the data, information and knowledge consumed. |
| | Essential (3) | Sustainable (4) | Currently, the service applies data mapping rules to map any of the data, information and knowledge consumed. Consider performing the necessary actions so as to enable the service to apply common semantic tools to map any data, information and knowledge consumed (e.g. mapping.semic.eu). |
| | Sustainable (4) | Seamless (5) | Currently, the service applies common semantic tools to map any data, information and knowledge consumed (e.g. mapping.semic.eu). Consider performing the necessary actions so as to enable the service to apply rules, in open data format, to map any data, information and knowledge consumed. |
| C4. | Ad hoc (1) | Opportunistic (2) | Currently, the service does not consume any documentation about the data, information and knowledge consumed. Consider performing the necessary actions so as to enable the service to consume, at least, human-readable documentation about the data, information and knowledge consumed. |
| | Opportunistic (2) | Essential (3) | Currently, the service consumes human-readable documentation about the data, information and knowledge consumed. Consider performing the necessary actions so as to enable the service to be able to consume ad-hoc machine-readable documentation about the data, information and knowledge consumed. |

| Question | Addressed Level | Next Level | Recommendation |
|------------|-------------------|-------------------|--|
| | Essential (3) | Sustainable (4) | Currently, the service consumes ad-hoc machine-readable documentation about the data, information and knowledge consumed (e.g. provides an unformatted introduction and explanation of the data, information and knowledge consumed). Consider performing the necessary actions so as to enable the service to consume formatted machine-readable documentation about the data, information and knowledge consumed (e.g. written in JSON). |
| | Sustainable (4) | Seamless (5) | Currently, the service provides formatted machine-readable documentation about the data, information and knowledge delivered (e.g. written in JSON). Consider performing the necessary actions so as to enable the service to provide formatted machine-readable documentation about the data in multiple open formats (e.g., JSON, XML, etc.) |
| C5. | Ad hoc (1) | Opportunistic (2) | Currently, the service does not consume data, information and knowledge from any Master data repository. Consider performing the necessary actions so as to enable the service to deliver basic data, information and knowledge to limited Master data repositories. |
| | Opportunistic (2) | Essential (3) | Currently, the service consumes basic data, information and knowledge from a Master data repository. Consider performing the necessary actions so as to enable the service to consume data, information and knowledge from specific Master Data repositories. |
| | Essential (3) | Sustainable (4) | Currently, the service consumes data, information and knowledge from specific Master Data repositories. Consider performing the necessary actions so as to enable the service to consume data, information and knowledge from a national Master Data repository (e.g. business registry). |
| | Sustainable (4) | Seamless (5) | Currently, the service consumes delivers data, information and knowledge from a national Master Data repository (e.g. business registry). Consider performing the necessary actions so as to enable the service to consume data, information and knowledge from a trans-European Master Data repository (e.g. reference data or base registry across borders). |