

VAT scheme for SME partial solution v.1.0

Value Proposition

EUROPEAN COMMISSION DIGIT D2

Directorate-General for Informatics (DIGIT)

Project Officer: Dr. Raul Abril

interoperable
europe

Overview of eGovERA©



eGovERA© is a solution for eGovernment portfolio management decision and **digital transformation support** in European Public administrations
eGovERA© Vision consists of supporting the next generation (for 2030) of European digital public services enabling business continuity, transformation and co-existence with the current state of affairs



The **CIO of a Member State** (e.g. Head of MS's Digital Agency), who needs to plan and optimise the investment in e-Government for the following years, while focusing on the modernisation of the MS's digital public services.

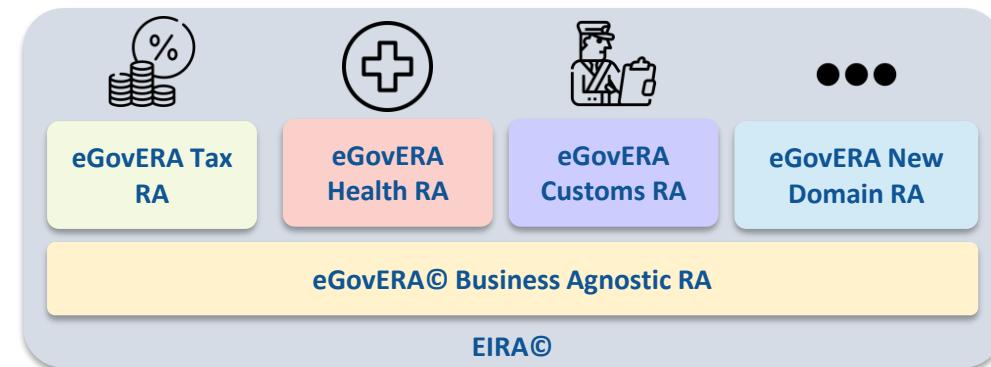


The **public administrations' services Portfolio Manager**, working on planning the long-term modernisation programmes of specific digital public services for citizens and businesses or of infrastructure services, who needs to have guidance in identifying the priority actions and their sequence.



The **enterprise or solution architect** working in the implementation of digital public services in a specific policy domain or in cross-domain infrastructure services, who needs to have a European reference model to plan the implementation phases.

eGovERA© reference architectures



eGovERA© Portfolio

The **eGovERA© portfolio** includes these solution components to build-up different models according to the guidelines and perform implementation/conformance assessments with the provided tools

eGovERA© Foundation solution component releases



eGovERA© reference architectures

4 beta reference architectures, 3 policy-specific (Tax , Health and Customs policy domains) and the Business Agnostic RA.

eGovERA© Upscale solution component releases



eGovERA© eGovernment Business Capabilities Assessment

Survey tool for the identification of the MS's priority for each digital business capabilities and the current MS's ability to deliver each Architecture Building Block for the Health, Tax and customs domain.



eGovERA© eGovernment Portfolio Management Decision Support

Quadrant tool enabling the prioritisation of the selected digital business capabilities adjusting the National Digital Strategic Fit Expected Public Value and "Ability to support the DBCs" values, per public policy domain.



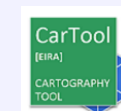
eGovERA© digital transformation roadmap

Roadmap tool providing the operative steps to be performed to increase the digital maturity.



eGovERA© portal

eGovERA© one-stop shop web portal enabling access to all the eGovERA© solution components.



The Cartography Tool (Cartool©) is an open platform implemented as a plugin in Archi© that brings high level support for EIRA© and eGovERA©.



An online, intuitive and self-service platform for conformance testing of IT systems against semantic and technical specifications.



IDPSIO

Interoperable Digital Public Service Implementation Orientation Assessment Tool aims to supports digital public service owners in deciding the approach to follow to implement their digital public services.



Overview of EIRA©

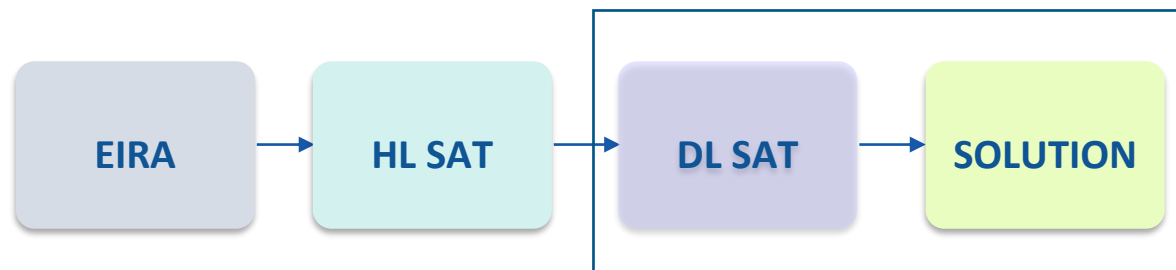
Overview

The European Interoperability Reference Architecture (EIRA©) is an architecture **content metamodel** defining the most salient architecture building blocks (**ABBs**) needed to build **interoperable** digital public services across borders and sectors

Structure

- Definition of concepts as Architecture Building Blocks (ABBs)
- ABBs organised in four views (Legal, Organisational, Semantic, Technical)

Solution Architecture Templates



ABSTRACT

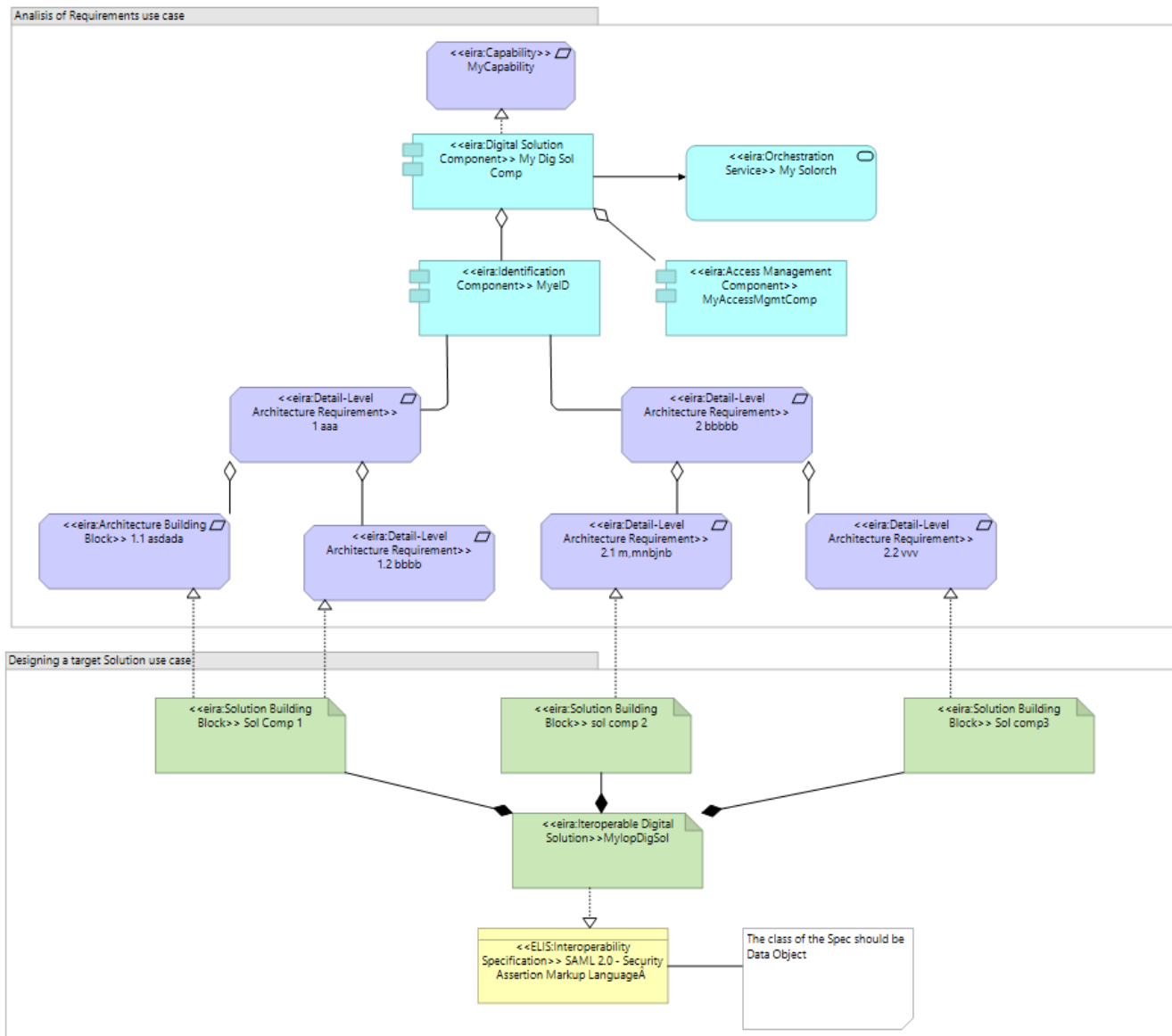
SPECIFIC

Cartography Tool



The Cartography Tool (Cartool©) is an open platform implemented as a plugin in Archi© that brings high level support for EIRA© and eGovERA©.

Solutions Architecture Templates (SATs)



ABSTRACT

HL-SAT

DL-SAT

DETAILED

SOLUTION

EIRA Key Concepts



In order to understand EIRA, it is essential to understand these key concepts related with a real example



Digital Business Capability
e.g. Electronic identification

Solution Architecture Template (SAT)

Specification containing ABBs and optional SBBs. It focuses on the most salient building blocks needed to build an interoperable solution addressing particular Digital Business Capabilities (DBC) and Digital Public Services (DPSs), involving business information exchange.

Digital Public Service
e.g. Authentication Service

Digital Business Capability (DBC)

An ability that an organization, person, or system possesses.

Architecture Building Block
e.g. eIdentification Service

Digital Public Service (DPS)

Services to be digitally provisioned/consumed.

Solution Building Block
e.g. <<...>> eIDAS-Node

Architecture Building Block (ABB)

Abstract component that captures architecture requirements and guides the development of Solution Building Blocks. An ABB represents a component of L,O,S,T capability that can be combined with other ABBs. Describes generic characteristics and functionalities and it is used to describe reference architectures, solution architecture templates or solution architectures of a specific solutions.

Solution Building Block (SBB)

Concrete element that defines the implementation and fulfils the required business requirements of the ABBs. On the technical view, a Solution Building Block is a specific product or software component and may be either procured or developed.

Value Proposition for VAT for SME



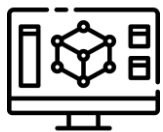
These are the main activities proposed for the VAT for SME initiative related to eGovERA Tax RA



Making a critical and comprehensive review of the **documented detailed requirements** based on experience, considering the **technical guidelines** as well.

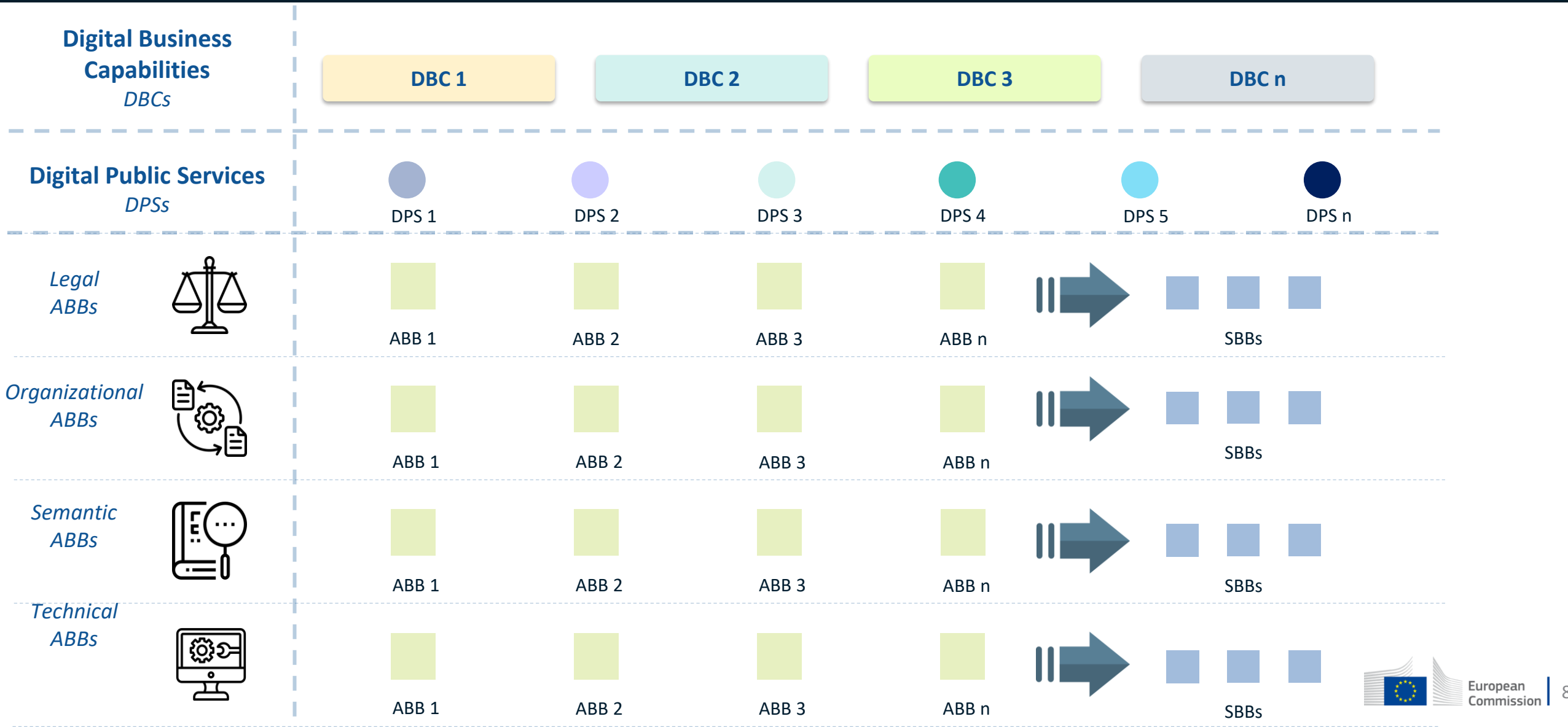


Increase **granularity** of the existing documented level of requirements and **Classifying** requirements from different point of views (legal, semantic, technical and organizational) that can be traced back to the source documentation.



Producing a **partial solution model** to be used by the MSs, to create their specific solution model. Documentation in the model itself. Identification of the common Solution Building Blocks.

Model Structure



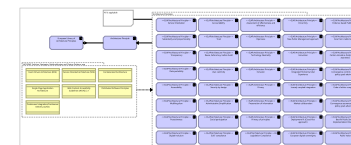


Handover of the model: *Interoperability in* *VAT4SME*

Interoperability in VAT4SME



The architecture Principles View sets the Architecture Principles (**ELAP**) to **ensure interoperability** and the European Commission recommendations.



Key Interoperability Enablers for Digital Public Services



Shared Legal Framework



Shared Governance Framework



Shared Knowledge Base



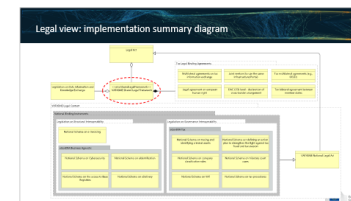
Shared Platform



Shared Infrastructure

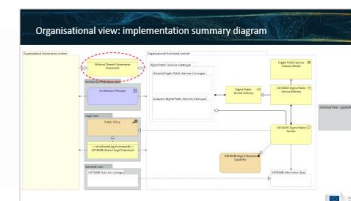
Legal view

The Legal view models the **Shared Legal Framework** (policy instruments) that shall be considered in order to support legal interoperability.



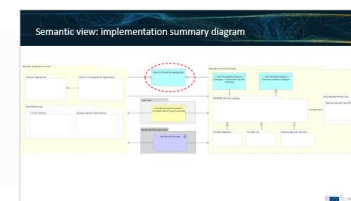
Organizational view

The characteristics of the VAT4SME solutions require a **National Shared Governance Framework**, which is described in the Organizational view.



Semantic view

The characteristics of the VAT4SME solutions require a **National Shared Knowledge Base**, which is described in the Semantic view.



Interoperability in VAT4SME

EIRA Key Interoperability Enablers for Digital Public Services



Shared Legal Framework



Shared Governance Framework



Shared Knowledge Base



Shared Platform



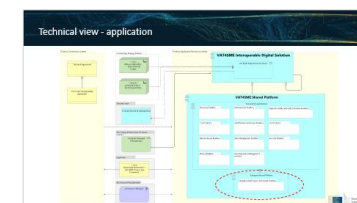
Shared Infrastructure

Technical view

- Application

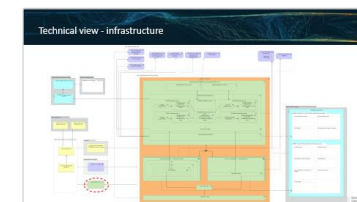
VAT4SME Shared Platform puts together the digital public services you should use, not create, in your solution. It is built of two sets:

- **National Shared Platform:** identifies the services, in your IT systems (ABBs), your solution should use. Your solution model must identify the SBBs that realizes these ABBs in your IT services inventory and satisfy the interoperability requirements.
- **European Shared Platform:** identifies the services, in the EC IT systems (SBBs), your solution will use. As they are SBBs, your solution model must satisfy the interoperability requirements of these SBBs.



It sets the basis that you must accomplish to ensure **infrastructure interoperability**.

- **Shared Infrastructure** put together the common technical services your facility must provide to your solution: databases (Data Management Enablers), testing (Test Enablers), etc. These services are described in VAT4SME Implementation-Impacted National Shared Services catalogue.





Thank you

interoperable europe

innovation ∞ govtech ∞ community

Stay in touch



[\(@InteroperableEU\) / Twitter](#)



[Interoperable Europe - YouTube](#)



[Interoperable Europe | LinkedIn](#)

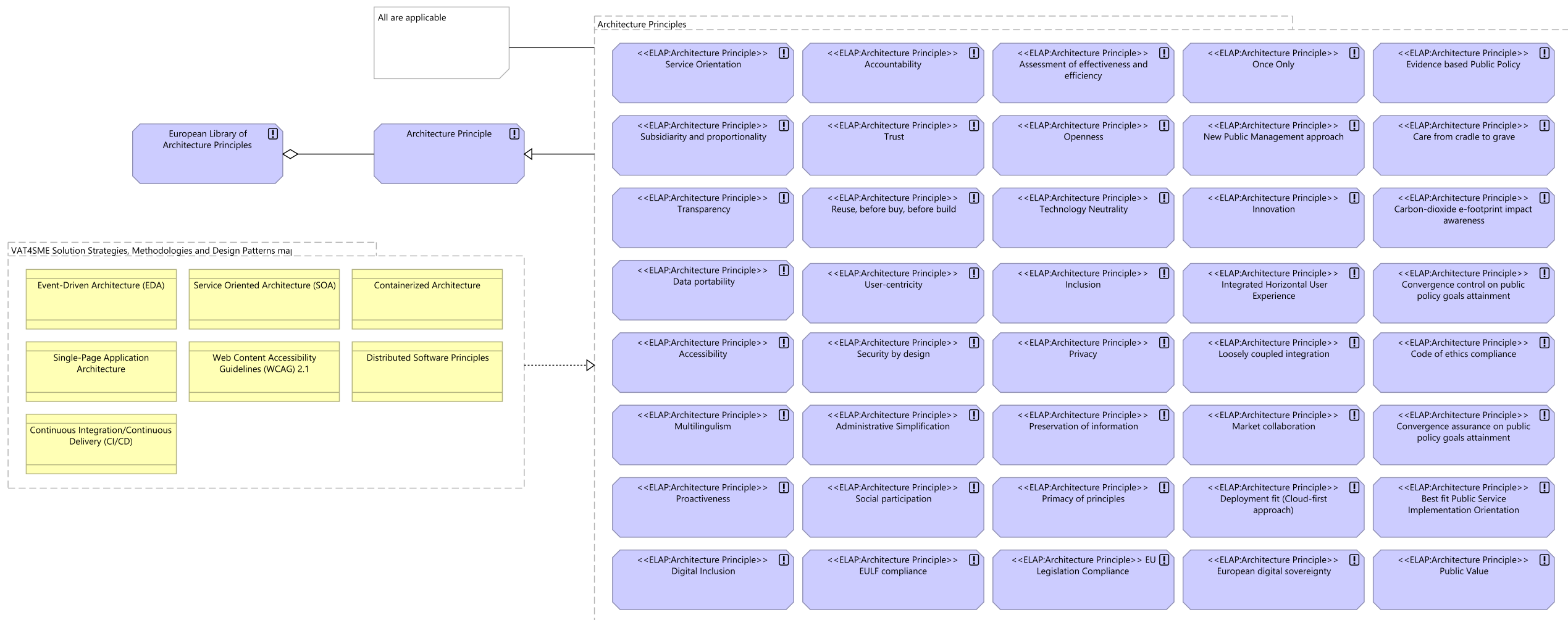


DIGIT-INTEROPERABILITY@ec.europa.eu

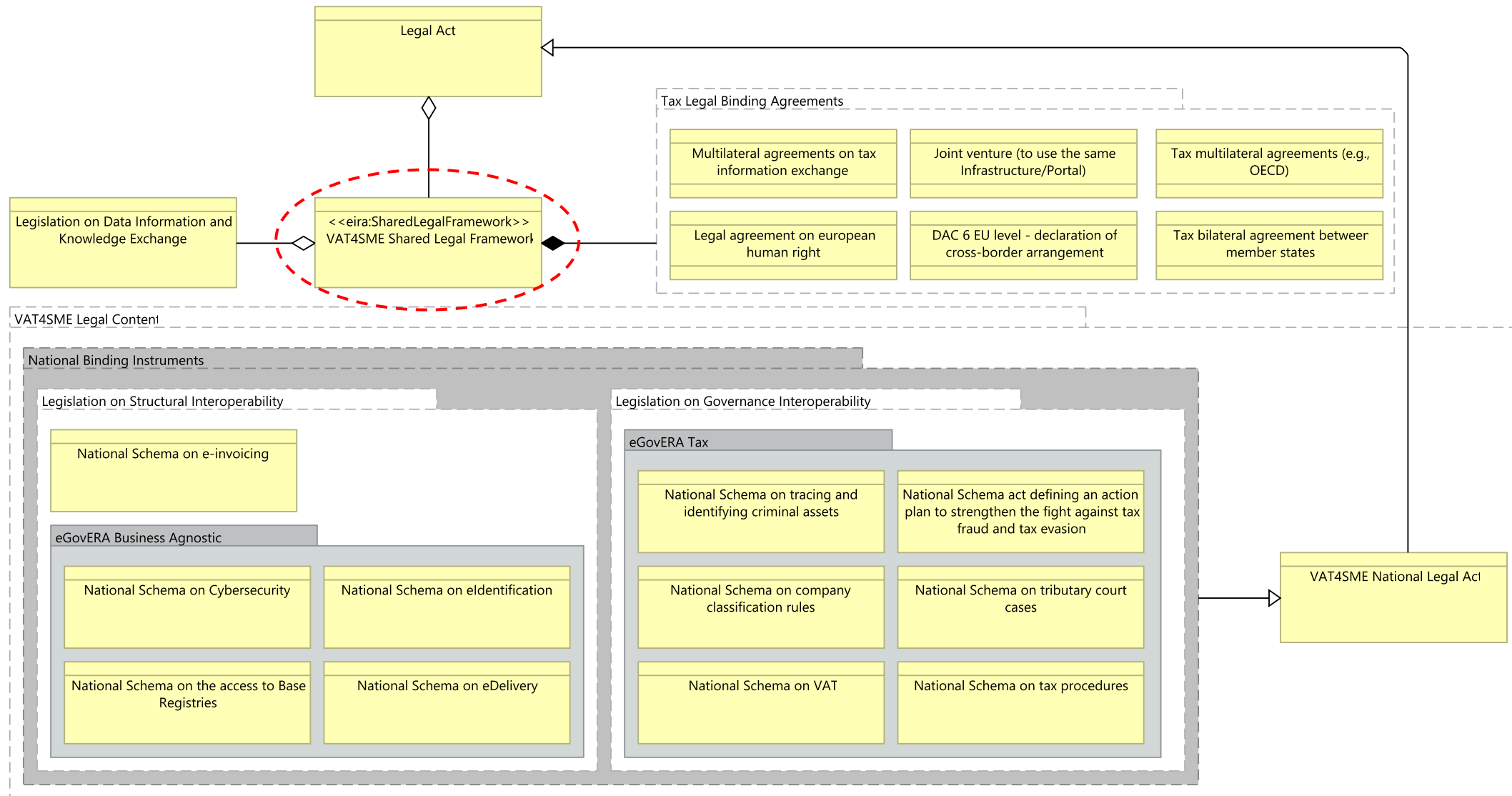


<https://joinup.ec.europa.eu/collection/interoperable-europe/interoperable-europe>

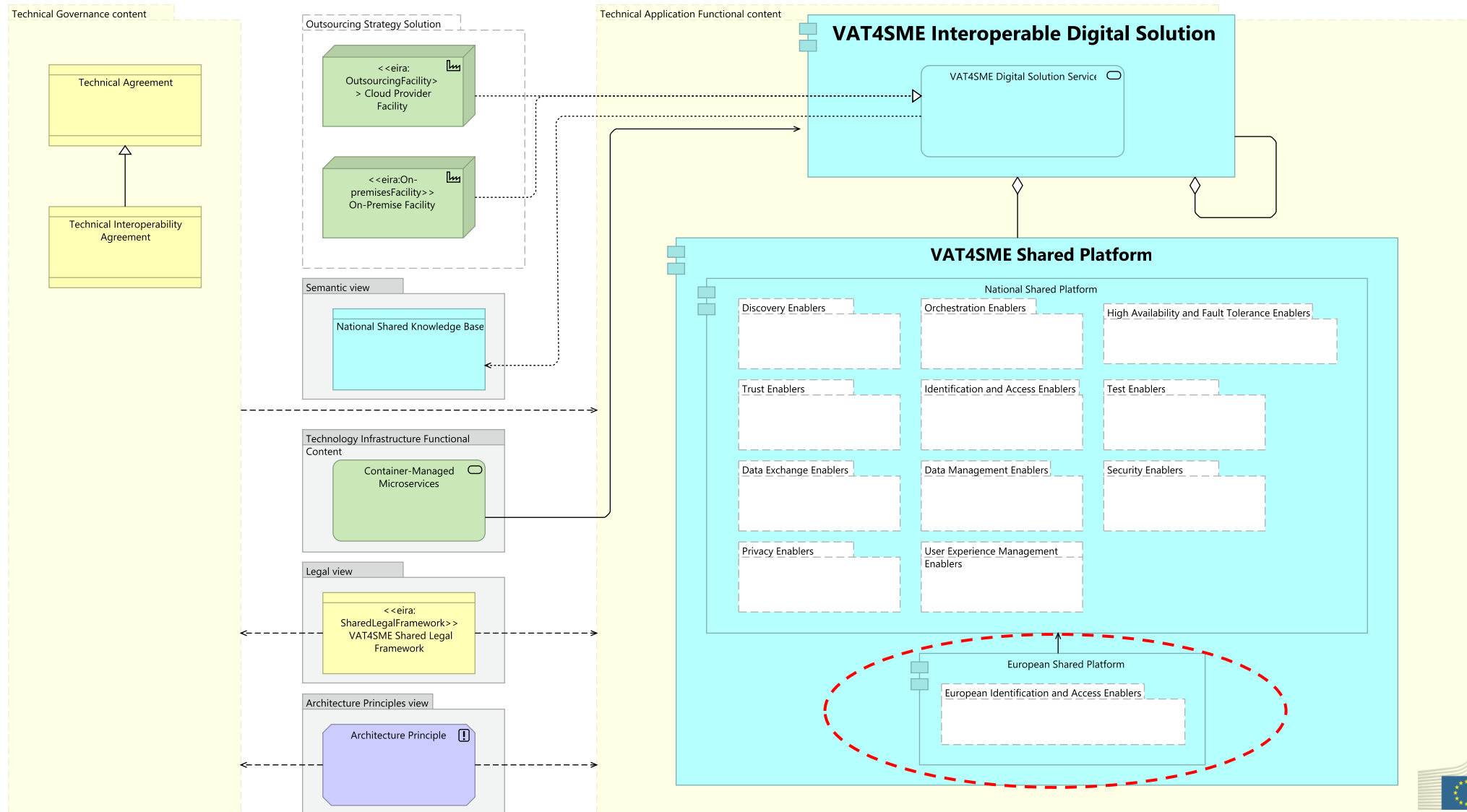
Architecture Principles view: implementation summary diagram



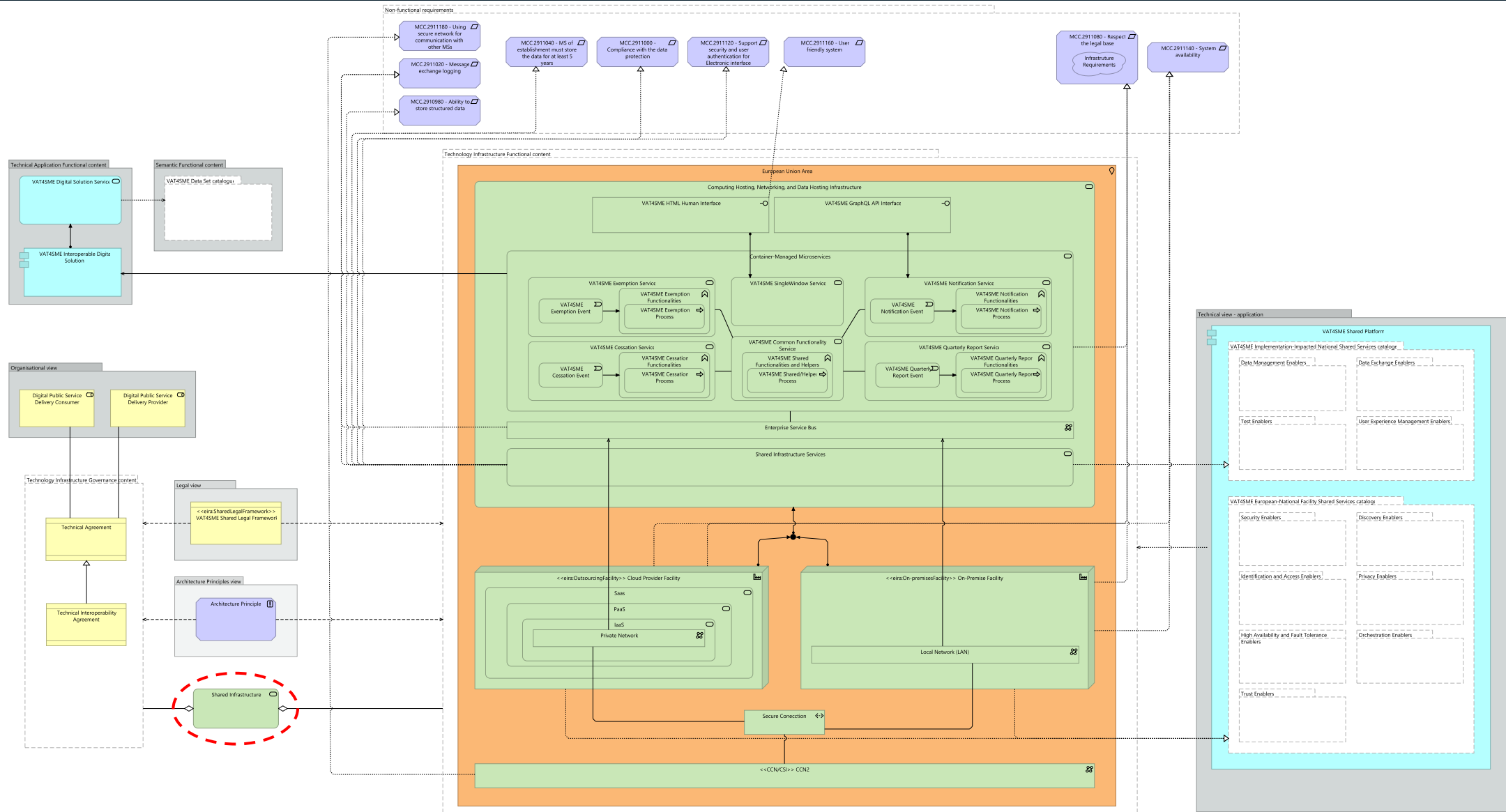
Legal view: implementation summary diagram



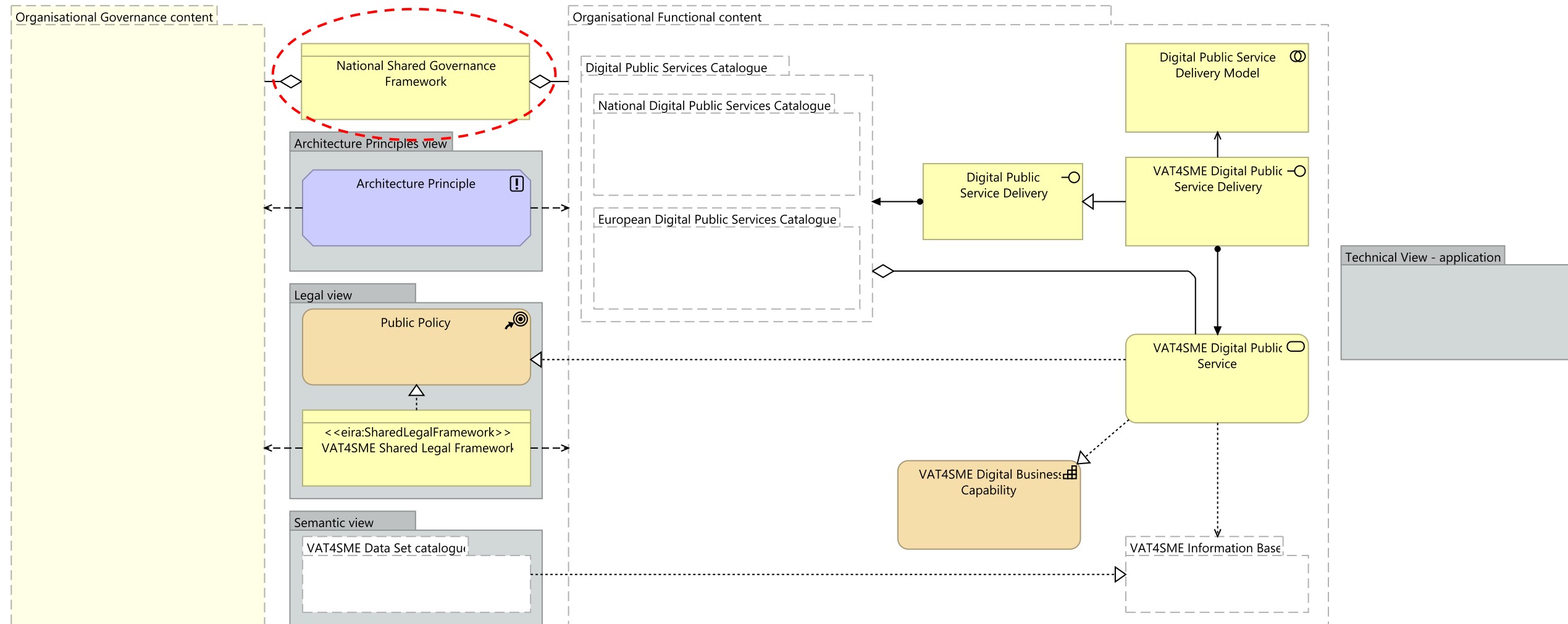
Technical view - application



Technical view - infrastructure



Organisational view: implementation summary diagram



Semantic view: implementation summary diagram

